



elements 
collection
by **teamdress**



Because some
projects belong
in the hands
of professionals

elements

collection

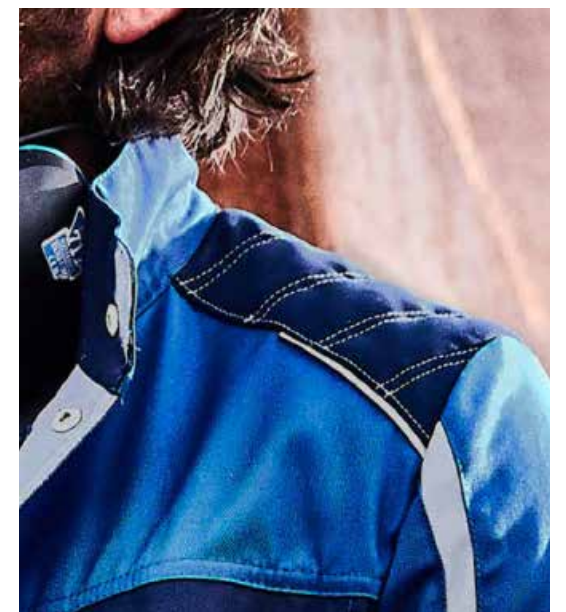


It's the small things that make a big difference

details



+ Stretch inserts in the back of the shoulder area for unrestricted freedom of movement



+ Padded shoulders for added comfort

+ Integrated reflective piping provides an extra level of visibility in poor light and at night



+ Lateral stretch inserts for greatly increased comfort and unrestricted freedom of movement



+ Every garment in the collection features a large variety of pockets specifically designed to conveniently store tools and other items



+ Ergonomically designed knee pad pockets which open from above for ease of use



+ Robust, fully tested materials provide a long garment life and are suitable for Industrial Laundry meeting the EN ISO 15797 standard



details



- Bib pocket with bellow pocket
- Attached pocket
- 2 side pockets
- Zip
- Cargo pocket
- Phone pocket
- Knee pad pockets
- Tool pocket
- Hip pocket
- Change pocket
- Stretch insert



Cool colour,
cool work wear

water





water

WORK JACKET



Men: 7200-347 7200-477
 Ladies: 7209-347 7209-477
 Men's sizes: 44 - 66, 94 - 114
 Ladies' sizes: 34 - 56

GILET



7203-347 7203-477
 Sizes: 44 - 66

WORK TROUSERS



Men: 7201-347 7201-477
 Ladies: 7210-347 7210-477
 Men's sizes: 44 - 66, 94 - 114, 23 - 30
 Ladies' sizes: 34 - 56

DUNGAREES



7202-347 7202-477
 Sizes: 44 - 66, 94 - 114, 23 - 30

SHORTS

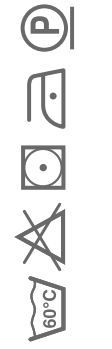


7204-347 7204-477
 Sizes: 44 - 66

SOFT SHELL JACKET



Men: 3508-265
 Ladies: 3509-265
 Men's sizes: XS - 3XL
 Ladies' sizes: XS - 2XL



Workwear fabric:
 65% polyester, 35% cotton, 270 g/m²



Soft shell jacket fabric:
 100% polyester, 240 g/m²



air

Light as air,
yet super tough



air

WORK JACKET



Men: 7200-556
Ladies: 7209-556

Men's sizes: 44 - 66, 94 - 114
Ladies' sizes: 34 - 56

GILET



7203-556

Sizes: 44 - 66

WORK TROUSERS



Men: 7201-556
Ladies: 7210-556

Men's sizes: 44 - 66, 94 - 114, 23 - 30
Ladies' sizes: 34 - 56

DUNGAREES



7202-556

Sizes: 44 - 66, 94 - 114, 23 - 30

SHORTS



7204-556

Sizes: 44 - 66

SOFT SHELL JACKET



Men: 3508-807
Ladies: 3509-807

Men's sizes: XS - 3XL
Ladies' sizes: XS - 2XL



Workwear fabric:
65% polyester, 35% cotton, 270 g/m²

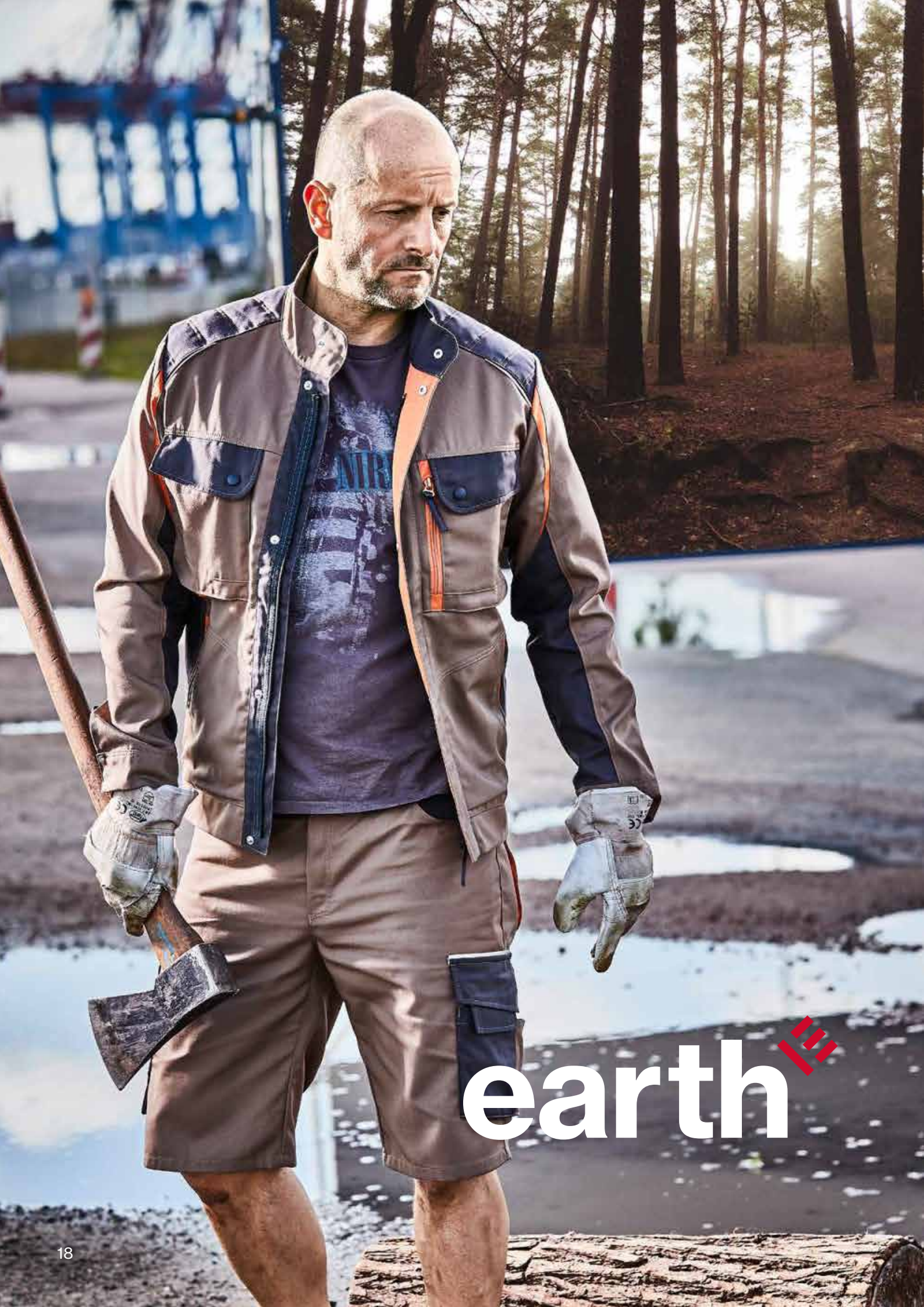


Soft shell jacket fabric:
100% polyester, 240 g/m²



Down to earth
work wear

earth 



earth

WORK JACKET



Men: 7200-866 7200-716
Ladies: 7209-866 7209-716

Men's sizes: 44 - 66, 94 - 114
Ladies' sizes: 34 - 56

GILET



7203-866 7203-716

Sizes: 44 - 66

WORK TROUSERS



Men: 7201-866 7201-716
Ladies: 7210-866 7210-716

Men's sizes: 44 - 66, 94 - 114, 23 - 30
Ladies' sizes: 34 - 56

DUNGAREES



7202-866 7202-716

Sizes: 44 - 66, 94 - 114, 23 - 30

SHORTS



7204-866 7204-716

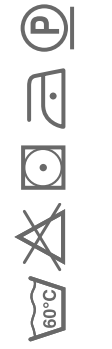
Sizes: 44 - 66

SOFT SHELL JACKET

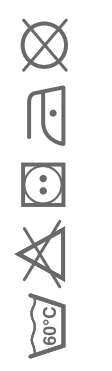


Men: 3508-125
Ladies: 3509-125

Men's sizes: XS - 3XL
Ladies' sizes: XS - 2XL



Workwear fabric:
65% polyester, 35% cotton, 270 g/m²



Soft shell jacket fabric:
100% polyester, 240 g/m²

When the going
gets tough, the tough
get going

carbon





carbon

WORK JACKET



Men: 7200-978 7200-907 7200-908
 Ladies: 7209-978 7209-907 7209-908

Men's sizes: 44 - 66, 94 - 114
 Ladies' sizes: 34 - 56

GILET



7203-978 7203-907 7203-908

Sizes: 44 - 66

WORK TROUSERS



Men: 7201-978 7201-907 7201-908
 Ladies: 7210-978 7210-907 7210-908

Men's sizes: 44 - 66, 94 - 114, 23 - 30
 Ladies' sizes: 34 - 56

DUNGAREES



7202-978 7202-907 7202-908

Sizes: 44 - 66, 94 - 114, 23 - 30

SHORTS



7204-978 7204-907 7204-908

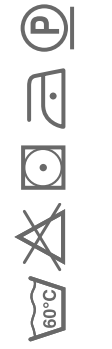
Sizes: 44 - 66

SOFT SHELL JACKET



Men: 3508-988
 Ladies: 3509-988

Men's sizes: XS - 3XL
 Ladies' sizes: XS - 2XL



Workwear fabric:
 65% polyester, 35% cotton, 270 g/m²



Soft shell jacket fabric:
 100% polyester, 240 g/m²

Jacket

Men 7200 – Ladies 7209

- + Stand-up collar
- + Padded shoulders
- + Hidden zip and snap fasteners
- + 2 chest pockets (bellow pocket) with flap and snap fasteners, left + zip-pocket + attachment for identity badge
- + 1 inner chest pocket with snap fastener
- + 2 side pockets
- + Adjustable cuffs with snap fasteners
- + Adjustable waistband with tabs and snap fasteners
- + Back stretch insert to assist with freedom of movement and ventilation



Dungarees

Men 7202

- + Adjustable elastic straps with side release buckles
- + High bib back
- + 1 bib pocket with flap and snap fasteners + attached pocket
- + 2 side pockets, right + coin pocket
- + 2 hip pockets (bellow pocket) with flap and snap fasteners
- + 1 reinforced ruler pouch + attached tool pocket
- + 1 thigh pocket (bellow pocket) with flap and snap fasteners + phone pocket with tab and velcro + small tool pocket
- + Lateral stretch inserts
- + Zip fly
- + Knee pad pockets with flap and velcro

Trousers

Men 7201 – Ladies 7210

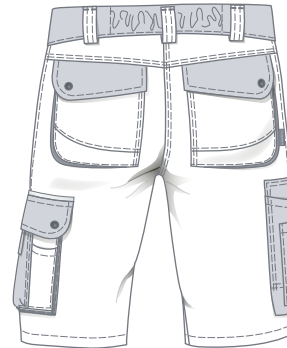
- + Waistband with jeans button
- + Elasticated back waistband
- + 7 wide belt loops
- + Zip fly
- + 2 side pockets, right + coin pocket
- + 2 hip pockets (bellow pocket) with flap and snap fasteners
- + 1 reinforced ruler pouch + attached tool pocket
- + 1 thigh pocket (bellow pocket) with flap and snap fasteners + phone pocket with tab and velcro + small tool pocket
- + Knee pad pockets with flap and velcro



Shorts

Men 7204

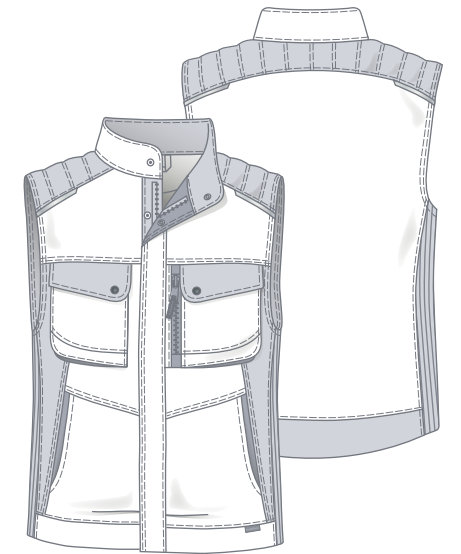
- + Waistband with jeans button
- + Elasticated back waistband
- + 7 wide belt loops
- + Zip fly
- + 2 side pockets, right + coin pocket
- + 2 hip pockets (bellow pocket) with flap and snap fasteners
- + 1 reinforced ruler pouch + attached tool pocket
- + 1 thigh pocket (bellow pocket) with flap and snap fasteners + phone pocket with tab and velcro + small tool pocket



Gilet

Men 7203

- + Padded quilted lining
- + Padded shoulders
- + Stand-up collar
- + Hidden zip and snap fasteners
- + 2 chest pockets (bellow pocket) with flap and snap fasteners, left + zip-pocket + Attachment for identity badge
- + 1 inner chest pocket with velcro
- + 2 side pockets
- + Lateral stretch inserts



collection



Softshell jacket

Men 3508 – Ladies 3509

- + Stand-up collar
- + Front with zip
- + 1 chest pocket with zip
- + 2 side pockets with zip
- + 2 inner side pockets, left: + pocket with zip
- + Sleeve hem with elasticated band
- + Reflective piping at front and back yoke and sleeves



measure



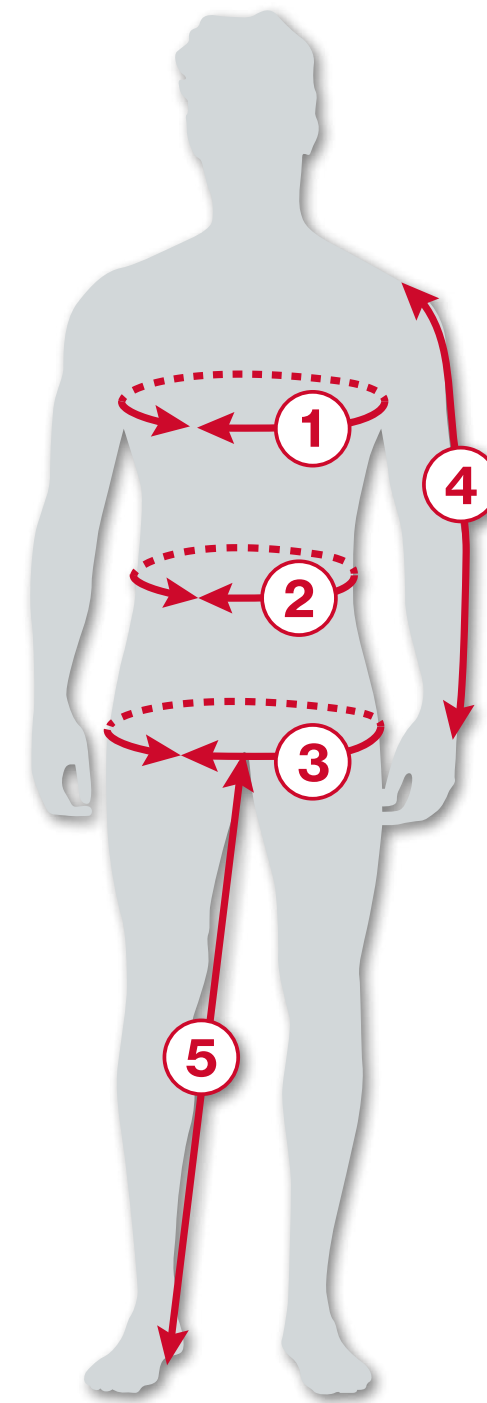
MEASURES IN CM

	LADIES													
	Sizes													
	34	36	38	40	42	44	46	48	50	52	54	56	58	60
① Chest	80	84	88	92	96	100	106	112	118	124	130	136	142	148
② Waist	64	68	72	76	80	84	90	96	102	108	114	120	126	132
③ Hip	89	93	97	101	105	109	115	121	127	133	139	145	151	157
④ Sleeve length	58,5	58,5	58,5	58,5	58,5	58,5	58,5	58,5	58,5	58,5	58,5	58,5	58,5	58,5
⑤ Inside leg	78	78	78	78	78	78	78	78	78	78	78	78	78	78

	MEN															
	Sizes															
	XS		S		M		L		XL		2XL		3XL		4XL	
	40	42	44	46	48	50	52	54	56	58	60	62	64	66	68	70
① Chest	80	84	88	92	96	100	104	108	112	116	120	124	128	132	136	140
② Waist	68	72	76	80	84	88	92	96	100	106	112	118	124	130	136	142
③ Hip	88	92	96	100	104	108	112	116	120	124	128	132	136	140	144	148
④ Sleeve length	59	61	62	63	64	65	66	67	68	69	70	71	72	73	74	75
⑤ Inside leg	72	74	76	77	78	79	80	81	82	83	84	84	84	84	84	84
LONG SIZES	XS-L		S-L		M-L		L-L		XL-L							
④ Sleeve length	82	86	90	94	98	102	106	110	114	118						
⑤ Inside leg	76	78	80	81	82	83	84	85	86	87						
SHORT SIZES	XS-K		S-K		M-K		L-K		XL-K		2XL-K		3XL-K			
④ Sleeve length	20	21	22	23	24	25	26	27	28	29	30	31	32	33		
⑤ Inside leg	67	69	71	72	73	74	75	76	77	78	79	79	79	79		

Measurements ①-③
 the same as normal sizes

Size conversion table																
MEN	XS		S		M		L		XL		2XL		3XL		4XL	
	40	42	44	46	48	50	52	54	56	58	60	62	64	66	68	70
LADIES	34	36	38	40	42	44	46	48	50	52	54	56	58			





elements
collection

www.elements-workwear.com

Stein Deutschland GmbH
Brandstücken 27
22549 Hamburg
Germany
Phone: +49 40 800905-01
Fax: +49 40 800905-21
eMail: info@teamdress.de
Web: www.teamdress.de