

teamdress®

high performance workwear

**OPTIMUM PROTECTION,
ALWAYS AND EVERYWHERE.**

Safe and comfortable PPE protective clothing, also with sustainable fabric.

CONTENTS

- 4 ITEM MATRIX**
- 8 ECOROVER**
- 10** Welder
- 14** Safety
- 18** Safety Plus
- 22 HIGH-VIS-MULTINORM**
- 24** Heavy - high-vis yellow
- 26** Light - high-vis yellow
- 28** Heavy - high-vis orange
- 30** Light - high-vis orange
- 32 HIGH-MULTINORM**
- 32** Heavy
- 34** Light
- 36 WEATHER HIGH-VIS-MULTINORM**
- 40** Jacket + Trousers
- 42** Fleece + Softshell jacket
- 44 FOUNDRY/WELDING**
- 46** Heavy
- 50** Light
- 54 WELDING**
- 54** Class 1
- 58** Class 2
- 62 MULTINORM**
- 63** 1-ply
- 66** Design according to HACCP
- 70** 2-ply
- 74 ADDITIONAL ITEMS**
- 76** Polos + Sweatshirts, Belt, Long johns, Balaclava
- 78** Shirts
- 80 HIGH-VISIBILITY**
- 81** Two-tone
- 86** Poloshirt
- 87** Vests
- 88** Softshell jackets
- 90** Fleece jackets
- 92** Weather jacket
- 96 LOGOS**
- Sizes + Positions
- + Informations
- 103 REPAIR INSTRUCTIONS**
- 104 GRÖßEN + MAßE**
- 106 PPE STANDARDS**

PPE?



Your health and your safety are our most important aim when creating PPE protective clothing. We at teamdress align all our planning and manufacturing with this goal. Benefit from our experience of over 100 years in the manufacture of workwear.

PPE NORMS

We operate fully in accordance with the PPE Regulation (EU) 2016/425. All our PPE items are certified in compliance with the relevant standards for the relevant area of application. Wherever possible and appropriate, we exceed the requirements of these standards.

PPE APPLICATION

In addition to multi-norm clothing, we offer specific clothing solutions for all PPE-relevant functional areas with the objective of optimizing the combination of protection and work effectiveness.

PPE DEVELOPMENT

In addition to the standards, we pay particular attention to your feedback. These suggestions have effectuated that we are constantly using new fabrics with improved properties; that we are changing features in the collections; that components, cuttings and manufacturing have been adapted; and that we are constantly increasing the durability of our products.

PPE SUSTAINABILITY

Increased durability, especially in industrial laundry, fit accuracy and wearing comfort result in a longer lifetime of our products. In conjunction with certification to various (socio-) ecological standards, we live resource conservation; and we will continue to improve it.

We will gladly advise you on the selection of suitable protective clothing. Together, we can ensure that your employees are equipped with optimal protective clothing for their activities and their working environment.

QUICK FINDER

LOGOS A-F

A

all collections are marked with a letter - the emblem sizes and positions are shown from page 96 onwards

20471

11611

11612

1149-5

61482-2

13034

343

according to their certification, the collections are marked on the pages with coloured standards



+ our sustainable collections



- + The seal is issued by the Federal Ministry for Economic Cooperation and Development.
- + The Green Button seal makes sustainably produced textiles visible in trade.
- + The Green Button sets binding requirements to ensure that people and nature are not harmed.

Learn more at:
www.gk-info.eu/teamdress



- + Lyocell fibers (TENEC™) are made from wood.
 - + Environmentally conscious manufacturing process with more than 99% recycling of process materials into the production cycle.
 - + Absorbs moisture more efficiently than cotton, dry feeling.
- TENEC™ is a brand of Lenzing AG

ITEM-MATRIX

	ECOROVER			HIGH-VIS-MULTINORM high-vis yellow / navy blue		HIGH-VIS-MULTINORM high-vis orange / navy blue		HIGH-MULTINORM navy blue		HIGH-VIS-MULTINORM	MULTINORM Weather			
	Welder	Safety	Safety Plus	Heavy	Light	Heavy	Light	Heavy	Light	Weather	Fleece	Softshell		
	320g/m ² 47% modacrylic 32% cotton 20,5% polyamide 0,5% antistatic	265g/m ² 48,5% modacrylic 34% cotton 17% polyamide 0,5% antistatic	320g/m ² + 175g/m ² 47% modacrylic 32% cotton 20,5% polyamide 0,5% antistatic	450g/m ² 52% cotton 22% modacrylic 19% viscose 6% para-aramid 1% antistatic	250g/m ² 42% modacrylic 25% cotton 22% polyamide 10% viscose 1% antistatic	320g/m ² + 170g/m ² 31% polyester 28% modacrylic 20% aramid 20% viscoseFR 1% antistatic	320g/m ² 31% polyester 28% modacrylic 20% aramid 20% viscoseFR 1% antistatic	450g/m ² 52% cotton 22% modacrylic 19% viscose 6% para-aramid 1% antistatic	250g/m ² 42% modacrylic 25% cotton 22% polyamide 10% viscose 1% antistatic	315g/m ² 55% modacrylic 43% cotton 2% antistatic polyurethane membrane	360g/m ² + 170g/m ² 48% modacrylic 32% cotton 18% polyester 19% viscose 2% antistatic	515g/m ² 38% modacrylic 28% cotton 17% aramid 7,5% polyester 5% polyurethane 4% polyamide 0,5% antistatic		
	A1+A2 B1 C1 E2 F1	A1 B1 C1 E1 F1	A1+A2 B1 C1 E2 F1	A1+A2 B1 C1 E3 [D3] F1	A1 B1 C1 F1	A1 B1 C1 E1 F1	A1 B1 C1 E1 F1	A1+A2 B1 C1 E3 [D3] F1	A1 B1 C1 F1	A1 B1 C1 F1	A1 B1 C2	A1+A2 B1 C2 F2	A1 B1 C2 F2	A1 B1 C2 F2
	APC 1	APC 1	APC 2	APC 2	APC 1	APC 2	APC 1	APC 2	APC 1	APC 2	APC 1	APC 2	APC 2	APC 2
	Page 10	Page 14	Page 18	Page 24	Page 26	Page 28	Page 30	Page 32	Page 34	Page 36	Page 42	Page 42		

+ teamdress is a member of



MADE IN GREEN



STANDARD 100

OEKO-TEX® STANDARD 100

- + Compliance with legal requirements for textile-relevant chemicals
- + Annual re-evaluation and further development of defined limit values and criteria
- + Globally uniform and scientifically based test criteria

Learn more at www.oeko-tex.com/standard-100

ITEM-MATRIX

	FOUNDRY CLOTHING with welding protection		WELDING PROTECTION		MULTINORM with Arc Flash		MULTINORM with Arc Flash		ADDITIONAL ITEMS		HIGH VISIBILITY			
	Class 2	Class 1	Class 1	Class 2	Class 1	Class 1	Class 2	Polo, Sweat	Shirts	Two-tone	1-, 2-colour	Weather		
	430g/m ² 52% cotton 37% modacrylic 10% viscose 1% antistatic	340g/m ² 50% cotton 39% modacrylic 10% viscose 1% antistatic	350g/m ² 64% cotton 35% polyester 1% antistatic	420g/m ² 100% cotton	300g/m ² 50% lyocell 30% cotton 19% polyester 1% antistatic	300g/m ² 50% lyocell 30% cotton 19% polyester 1% antistatic	330g/m ² + 140g/m ² 50% lyocell 30% cotton 19% polyester 1% antistatic	160g/m ² - 260g/m ²	170g/m ² - 190g/m ²	270g/m ² 50% polyester 50% cotton	Polo Vests Softshell jackets Fleece jackets	210g/m ² 100% polyester 2-layer laminate		
					✓	✓	✓							20471
														11611
	CLASS 2 A1+A2	CLASS 1 A1+A2	CLASS 1 A1+A2	CLASS 2 A1+A2	CLASS 1 A1	CLASS 1 A1	CLASS 1 A1+A2							11612
														11612
	A1+A2 B1 C1 E3 [D3] F1	A1+A2 B1 C1 E2 [D2] F1	A1+A2 B1 C1 E1	A1+A2 B1 C1 E2 F1	A1 B1 C1 E3 F1	A1 B1 C1 E3 F1	A1+A2 B1 C1 E2 F1	A1+A2 B1 C1 F1	A1+A2 B1 C1 [F1]					1149-5
														1149-5
														61482-2
	APC 1	APC 1			APC 1	APC 1	APC 2	APC 1	APC 1					61482-2
														13034
														343
	Page 46	Page 50	Page 54	Page 58	Page 63	Page 66	Page 70	Page 74	Page 78	Page 81	Page 86	Page 92		7

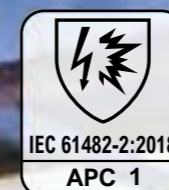
ecoRover

by teamdress



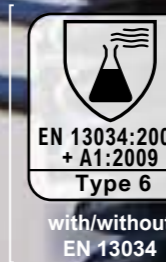
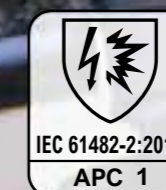
WELDER

320g/m²



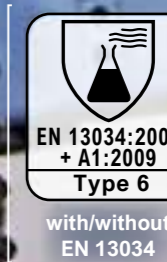
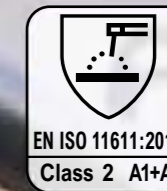
SAFETY

265g/m²



SAFETY PLUS

320g/m²
+
175g/m²



LOGOS

20471

11611

11612

1149-5

61482-2

13034

343



939
navy blue
black/blue



988
black
grey

GRÜNER KNOPF
SOZIAL ÖKOLOGISCH STAATLICH
UNABHÄNGIG ZERTIFIZIERT.



JACKET



ITEM 7500

SIZES: 44 - 66
90 - 114

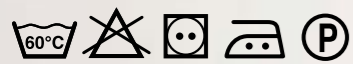
- + Plastic buttons and zips
- + Stand-up collar
- + Front with hidden snap fasteners
- + 2 chest pockets with flap and hidden snap fasteners
- + 2 side pockets with flap and hidden snap fastener
- + 1 inner chest pocket with hidden snap fastener
- + Adjustable cuffs with snap fasteners

320g/m²

MATERIAL:

47% modacrylic
32% cotton
20,5% polyamide
0,5% antistatic

CARE:



ATPV of fabric:
11 cal/cm²

ecoRover
WELDER

inherent flame retardant

LOGOS

A

20471

11611

11612

1149-5

61482-2

13034

343

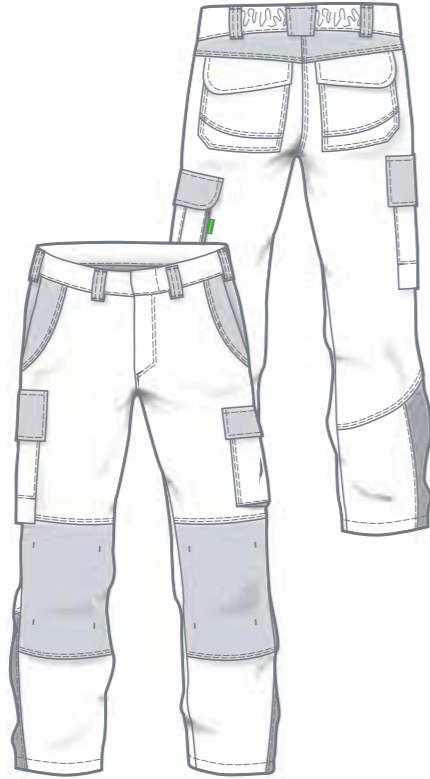
TROUSERS

ITEM 7501

SIZES: 44 - 66
90 - 114
22 - 33



- + Plastic buttons and zips
- + 7 wide belt loops
- + Waistband fastener with button
- + Elasticated back waistband
- + 2 side pockets
- + 2 hip pockets with flap and hidden snap fasteners
- + 1 reinforced ruler pouch with flap and hidden snap fasteners
- + 1 cargo pocket with flap and hidden snap fastener and velcro + attached phone pocket
- + Zip fly
- + Knee reinforcement with opening for knee pads, with velcro



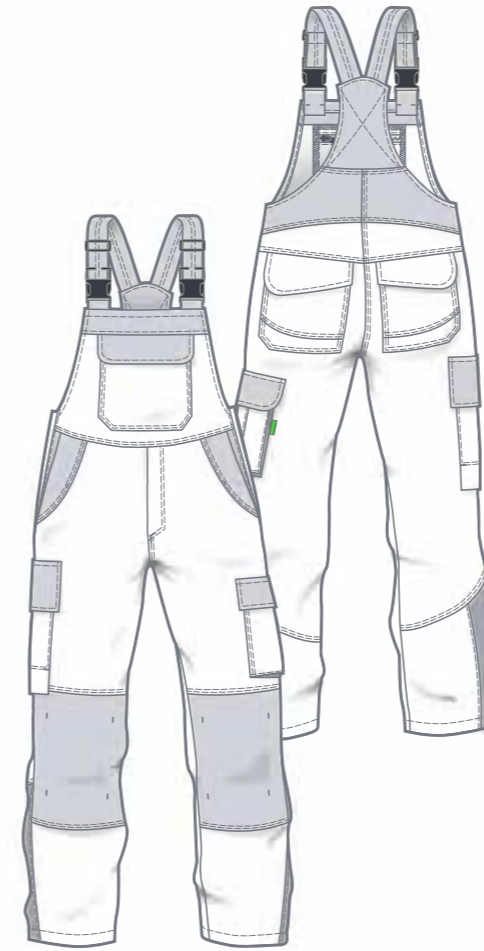
DUNGAREES

ITEM 7502

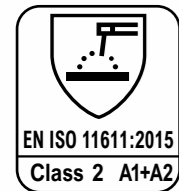
SIZES: 44 - 66
90 - 114
22 - 33



- + Plastic buttons and zips
- + Adjustable elastic straps with side release buckles
- + High bib back
- + 1 bib pocket with flap and hidden snap fasteners
- + 1 inner bib pocket with hidden zip
- + 2 side pockets
- + 2 hip pockets with flap and hidden snap fasteners
- + 1 reinforced ruler pouch with flap and hidden snap fasteners
- + 1 cargo pocket with flap and hidden snap fastener and velcro + attached phone pocket
- + 2 side fasteners with jeans button, snap fastener and gusset
- + Zip fly
- + Knee reinforcement with opening for knee pads, with velcro



inherent flame retardant



ATPV of fabric:
11 cal/cm²



939
navy blue
black / blue

988
black
grey

CARE:



MATERIAL:

47% modacrylic
32% cotton
20,5% polyamide
0,5% antistatic



WELDER



LOGOS

A

20471

11611

11612

1149-5

61482-2

13034

343

13



574
bleu
bleu foncé/gris

VESTE

N° ART. 5400

N° ART. 6400



TAILLES : 44 - 66
90 - 114

- + Boutons et fermetures éclair en plastique
- + Col montant
- + Façade avec fermeture éclair et boutons pression cachés
- + 2 poches de poitrine avec rabat et boutons pression cachés
- + 2 poches latérales avec rabat et bouton pression caché
- + 1 poche poitrine intérieure avec bouton pression caché
- + Ourlets de manche ajustables avec boutons pression



939
bleu foncé
noir/bleu



988
noir
gris



636
gris
noir/rouge

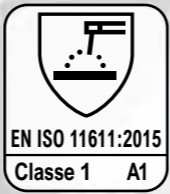


262
gris
noir

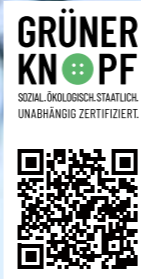


MATIÈRE :

48,5% Modacrylique
34% Coton
17% Polyamide
0,5% Antistatique



ATPV du tissu :
11 cal/cm²



ecoRover SAFETY

EMBLEMES
B

202471

11611

11612

1149-5

61482-2

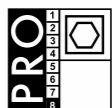
13034

343

14

15

LAVABLE :



inhérente aux flammes

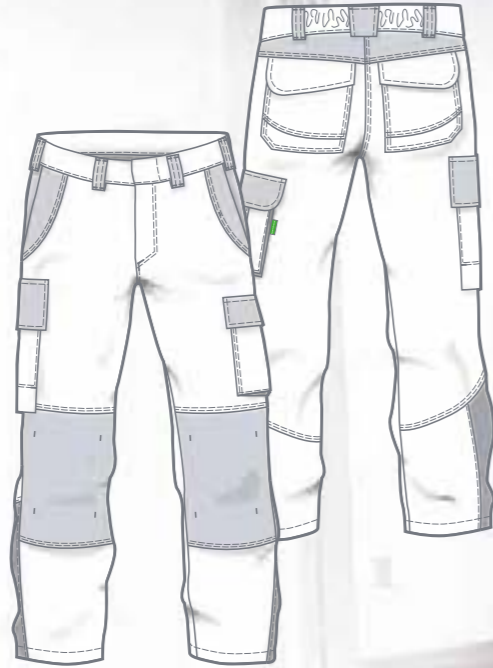
TROUSERS

ITEM 5401

ITEM 6401

SIZES: 44 - 66, 90 - 114
22 - 33

- + Plastic buttons and zips
- + 7 wide belt loops
- + Waistband fastener with button
- + Elasticated back waistband
- + 2 side pockets
- + 2 hip pockets with flap and hidden snap fasteners
- + 1 reinforced ruler pouch with flap and hidden snap fasteners
- + 1 cargo pocket with flap and hidden snap fastener and velcro + attached phone pocket
- + Zip fly
- + Knee reinforcement with opening for knee pads, with velcro



939
navy blue/
black/blue



574
blue
navy blue/grey



988
black
grey



636
grey
black/red



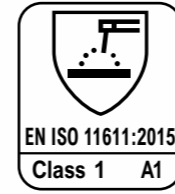
262
grey
black



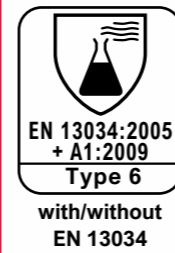
ecoRover

SAFETY

inherent flame retardant



ATPV of fabric:
11 cal/cm²



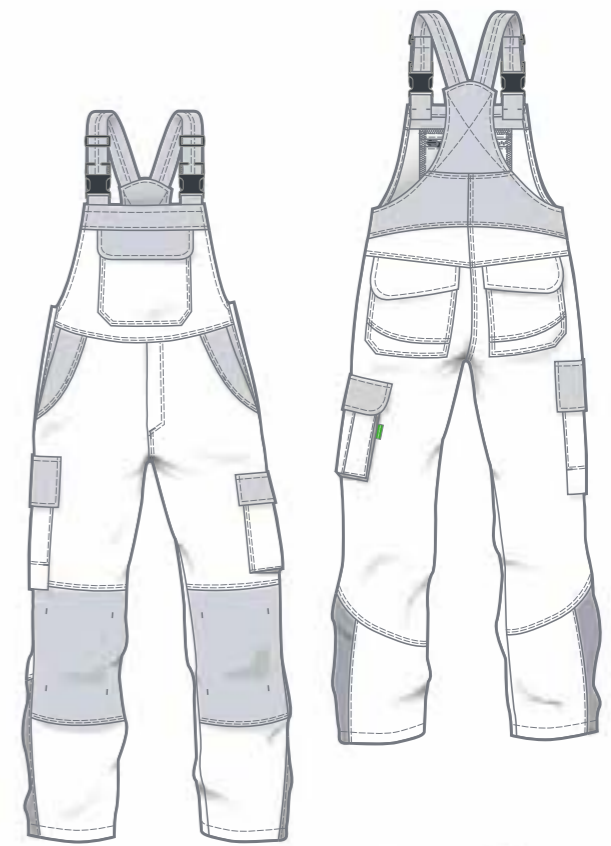
DUNGAREES

ITEM 5402

ITEM 6402

SIZES: 44 - 66, 90 - 114, 22 - 33

- + Plastic buttons and zips
- + Adjustable elastic straps with side release buckles
- + High bib back
- + 1 bib pocket with flap and hidden snap fasteners
- + 1 inner bib pocket with hidden zip
- + 2 side pockets
- + 2 hip pockets with flap and hidden snap fasteners
- + 1 reinforced ruler pouch with flap and hidden snap fasteners
- + 1 cargo pocket with flap and hidden snap fastener and velcro + attached phone pocket
- + 2 side fasteners with jeans button, snap fastener and gusset
- + Zip fly
- + Knee reinforcement with opening for knee pads, with velcro



574
blue
navy blue/grey



939
navy blue
black/blue



988
black
grey



636
grey
black/red



262
grey
black

265g/m²

MATERIAL:

48,5% modacrylic
34% cotton
17% polyamide
0,5% antistatic

CARE:



LOGOS

B

20471

11611

11612

1149-5

61482-2

13034

343



988
black
grey



574
blue
navy blue/grey



939
navy blue
black/blue



636
grey
black/red

JACKET



ITEM 4900

ITEM 6900

SIZES: 44 - 66
90 - 114

- + Plastic buttons and zips
- + Stand-up collar
- + Front with hidden snap fasteners
- + 2 chest pockets with flap and hidden snap fasteners
- + 2 side pockets with flap and hidden snap fastener
- + 1 inner chest pocket with hidden snap fastener
- + Adjustable cuffs with snap fasteners



320g/m²
+
175g/m²

MATERIAL:

47% modacrylic
32% cotton
20,5% polyamide
0,5% antistatic

LINING:

48,5% modacrylic
34% cotton
17% polyamide
0,5% antistatic

CARE:



ecoRover SAFETY PLUS



GRÜNER
KNÖPF
SOZIAL ÖKOLOGISCH STAATLICH
UNABHÄNGIG ZERTIFIZIERT



inherent flame retardant

LOGOS

B

2

11611

11612

1149-5

61482-2

13034

343



574
blue
navy blue/grey



939
navy blue
black/blue



636
grey
black/red



988
black
grey

TROUSERS

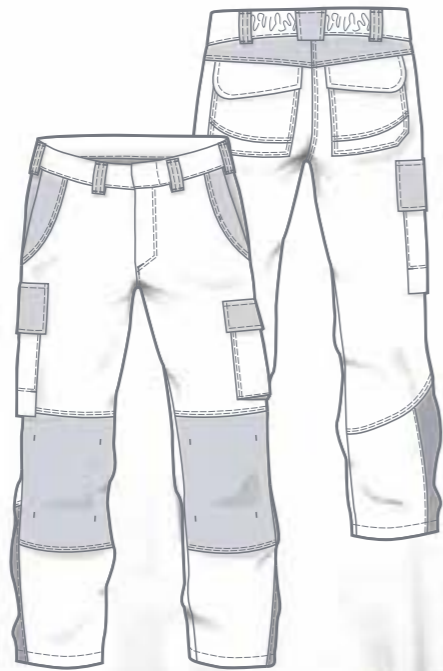
ITEM 4901

ITEM 6901



SIZES: 44 - 66
90 - 114
22 - 33

- + Plastic buttons and zips
- + 7 wide belt loops
- + Waistband fastener with button
- + Elasticated back waistband
- + 2 side pockets
- + 2 hip pockets with flap and hidden snap fasteners
- + 1 reinforced ruler pouch with flap and hidden snap fasteners
- + 1 cargo pocket with flap and hidden snap fastener and velcro + attached phone pocket
- + Zip fly
- + Knee reinforcement with opening for knee pads, with velcro



320g/m²
+
175g/m²

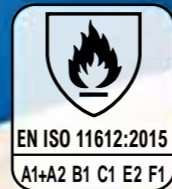
MATERIAL:

47% modacrylic
32% cotton
20,5% polyamide
0,5% antistatic

LINING:

48,5% modacrylic
34% cotton
17% polyamide
0,5% antistatic

inherent flame retardant



ATPV of fabric:
11 cal/cm²



with/without
EN 13034



574
blue
navy blue/grey



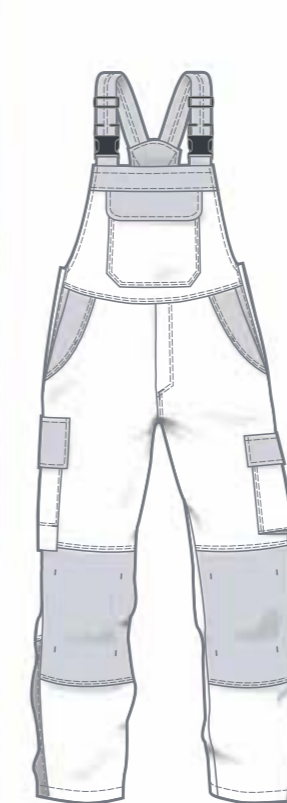
939
navy blue
black/blue



636
grey
black/red



988
black
grey



DUNGAREES

ITEM 4902

ITEM 6902



SIZES: 44 - 66
90 - 114
22 - 33

- + Plastic buttons and zips
- + Adjustable elastic straps with side release buckles
- + High bib back
- + 1 bib pocket with flap and hidden snap fasteners
- + 1 inner bib pocket with hidden zip
- + 2 side pockets
- + 2 hip pockets with flap and hidden snap fasteners
- + 1 reinforced ruler pouch with flap and hidden snap fasteners
- + 1 cargo pocket with flap and hidden snap fastener and velcro + attached phone pocket
- + 2 side fasteners with jeans button, snap fastener and gusset
- + Zip fly
- + Knee reinforcement with opening for knee pads, with velcro

CARE:



LOGOS

B

20471

11611

11612

1149-5

61482-2

13034

343

21

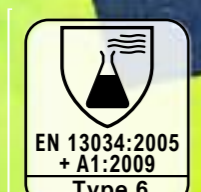
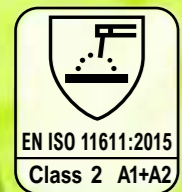
HIGH-VIS-MULTINORM

HEAVY

LIGHT

450g/m²

250g/m²

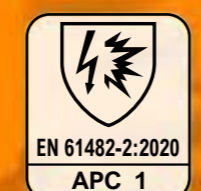
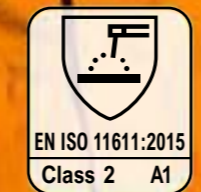
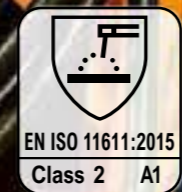


HEAVY

LIGHT

320g/m²
+
170g/m²

320g/m²



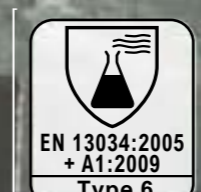
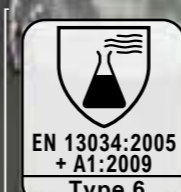
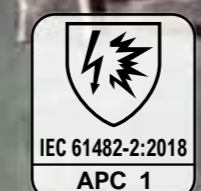
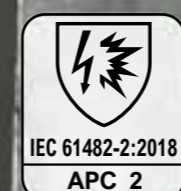
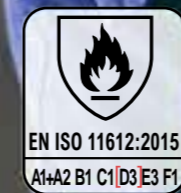
HIGH-MULTINORM

HEAVY

LIGHT

450g/m²

250g/m²



+ Back with emblem (PPE symbols)



+ Knee reinforcement with opening for knee pads



+ Cargo pockets inside with phone pocket

LOGOS

20471

11611

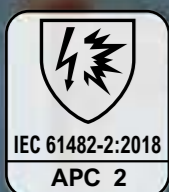
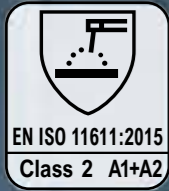
11612

1149-5

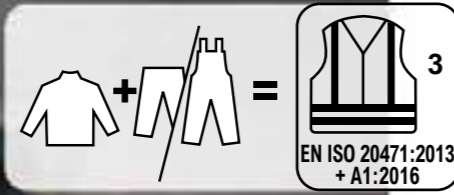
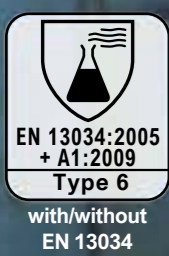
61482-2

13034

343

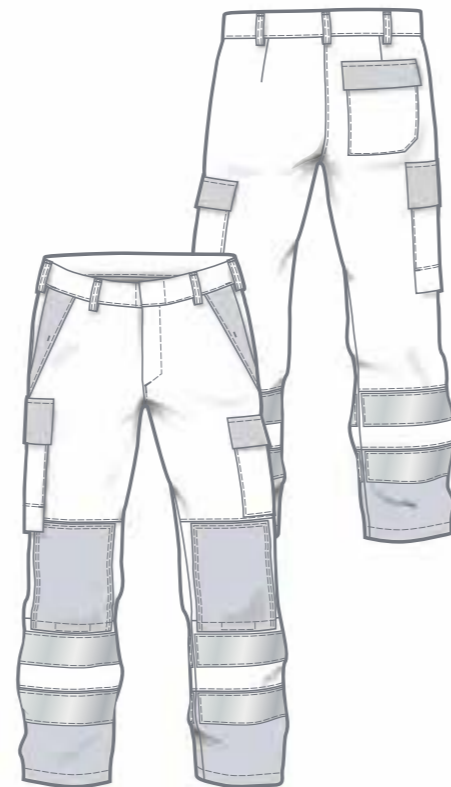
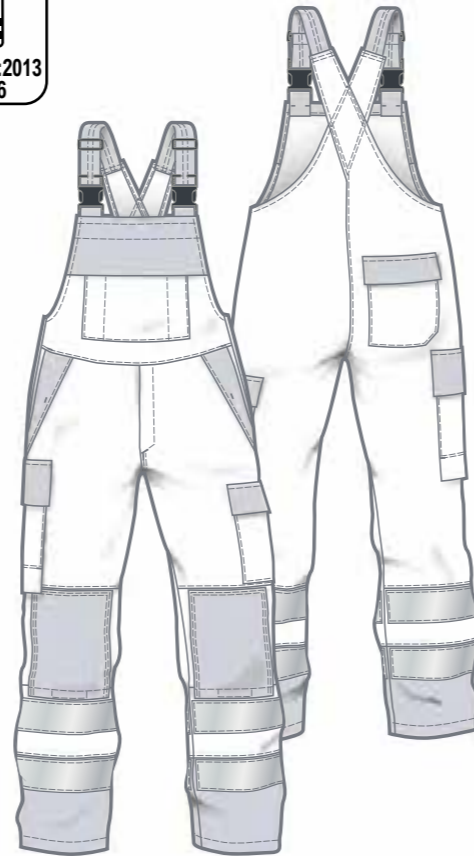


ATPV of fabric:
18 cal/cm²



HIGH-VIS-MULTINORM HEAVY

inherent flame retardant



911
high-vis yellow
navy blue



JACKET

- D3 ITEM 6080
- D3 ITEM 6180
- ITEM 7080
- ITEM 7180

SIZES: 44 - 66
90 - 114

- + Plastic buttons and zips
- + Stand-up collar
- + Front has zip and hidden snap fasteners
- + 2 chest pockets with flap and hidden snap fasteners
- + 2 side pockets with velcro flaps
- + 1 inner phone pocket with velcro tab
- + Adjustable cuffs with velcro tabs
- + 2 reflective stripes on torso and sleeves, 1 reflective stripe on shoulders (5 cm / 2 inch wide)

TROUSERS

- D3 ITEM 6081
- D3 ITEM 6181
- ITEM 7081
- ITEM 7181

SIZES: 44 - 66
90 - 114
22 - 33

- + Plastic buttons and zips
- + 7 belt loops
- + Waistband with hidden button
- + 2 side pockets with hidden snap fastener
- + 1 hip pocket with flap and snap fasteners
- + 1 cargo pocket with flap and hidden snap fasteners + inner phone pocket
- + 1 internally and externally reinforced ruler pouch with flap and hidden snap fasteners
- + Knee reinforcement with opening for knee pads, with velcro
- + Zip fly
- + 2 reflective stripes on legs (7 cm / 2,75 inch wide)

DUNGAREES

- D3 ITEM 6082
- D3 ITEM 6182
- ITEM 7082
- ITEM 7182

SIZES: 44 - 66
90 - 114
22 - 33

- + Plastic buttons and zips
- + 1 large bib pocket with flap and snap fasteners + attached side pocket with 2 pen holders
- + 2 side fasteners with button, snap fastener and gusset
- + 2 side pockets with hidden snap fastener
- + 1 hip pocket with flap and snap fasteners
- + 1 cargo pocket with flap and hidden snap fasteners + inner phone pocket
- + 1 internally and externally reinforced ruler pouch with flap and hidden snap fasteners
- + Knee reinforcement with opening for knee pads, with velcro
- + Zip fly
- + 2 reflective stripes on legs (7 cm / 2,75 inch wide)

CARE:



450g/m²

MATERIAL:

52% cotton / 22% modacrylic
19% viscose / 6% para-aramid / 1% antistatic

LOGOS

C

20471

11611

11612

1149-5

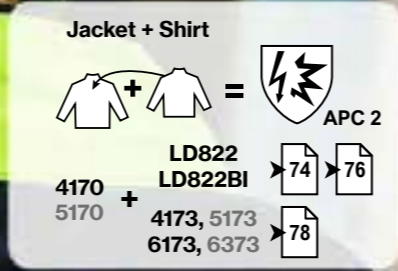
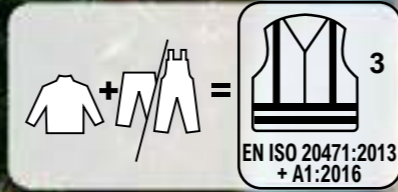
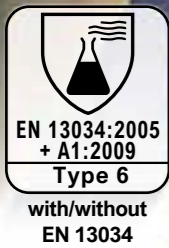
61482-2

13034

343



ATPV of fabric:
12 cal/cm²



inherent flame retardant

HIGH-VIS-MULTINORM LIGHT

JACKET

ITEM 4170

ITEM 5170

SIZES: 44 - 66
90 - 114

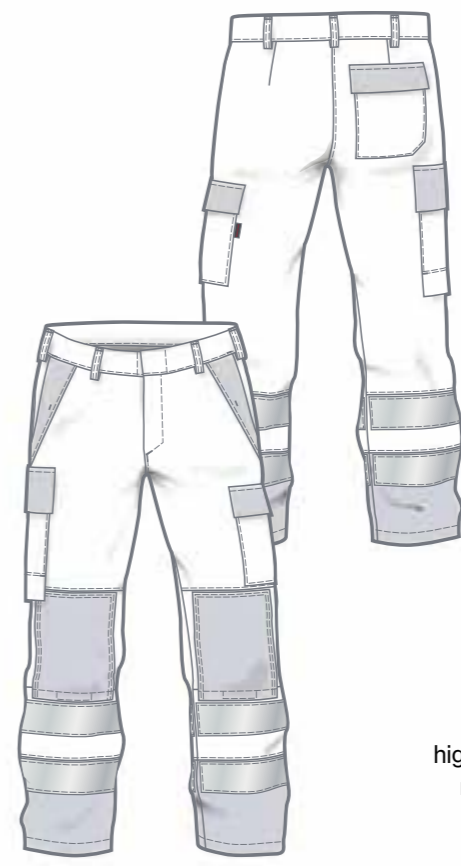
- + Plastic buttons and zips
- + Stand-up collar
- + Front has zip and hidden snap fasteners
- + 2 chest pockets with flap and hidden snap fasteners
- + 2 side pockets with velcro flaps
- + 1 inner phone pocket with velcro tab
- + Adjustable cuffs with velcro tabs
- + 2 reflective stripes on torso and sleeves, 1 reflective stripe on shoulders (5 cm / 2 inch wide)



911 high-vis yellow/navy blue



911 high-vis yellow navy blue



TROUSERS

ITEM 4171

ITEM 5171

SIZES: 44 - 66
90 - 114
22 - 33

- + Plastic buttons and zips
- + 7 belt loops
- + Waistband with hidden button
- + 2 side pockets with hidden snap fastener
- + 1 hip pocket with flap and snap fasteners
- + 1 cargo pocket with flap and hidden snap fasteners + inner phone pocket
- + 1 internally and externally reinforced ruler pouch with flap and hidden snap fasteners
- + Knee reinforcement with opening for knee pads, with velcro
- + Zip fly
- + 2 reflective stripes on legs (7 cm / 2,75 inch wide)

250g/m² MATERIAL: 42% modacrylic 25% cotton 22% polyamide 10% viscose 1% antistatic



911 high-vis yellow navy blue

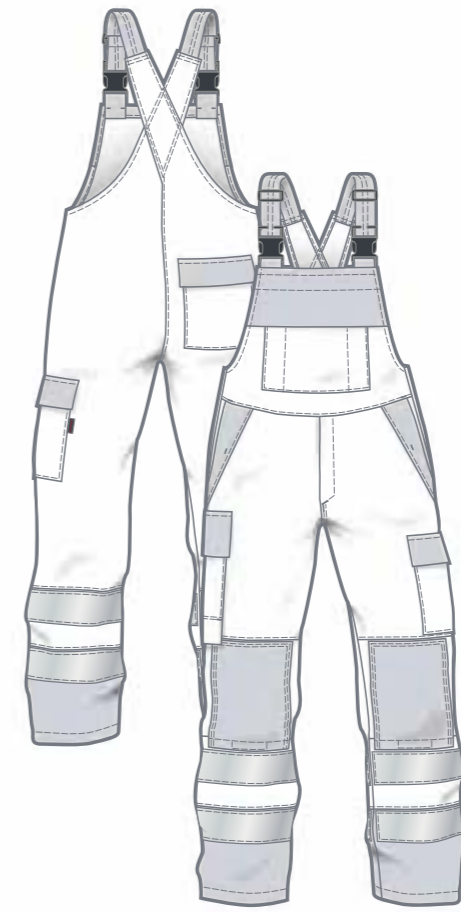
DUNGAREES

ITEM 4172

ITEM 5172

SIZES: 44 - 66
90 - 114
22 - 33

- + Plastic buttons and zips
- + 1 large bib pocket with flap and snap fasteners + attached side pocket with 2 pen holders
- + 2 side fasteners with button, snap fastener and gusset
- + 2 side pockets with hidden snap fastener
- + 1 hip pocket with flap and snap fasteners
- + 1 cargo pocket with flap and hidden snap fasteners + inner phone pocket
- + 1 internally and externally reinforced ruler pouch with flap and hidden snap fasteners
- + Knee reinforcement with opening for knee pads, with velcro
- + Zip fly
- + 2 reflective stripes on legs (7 cm / 2,75 inch wide)



LOGOS

D

20471

11611

11612

1149-5

61482-2

13034

343

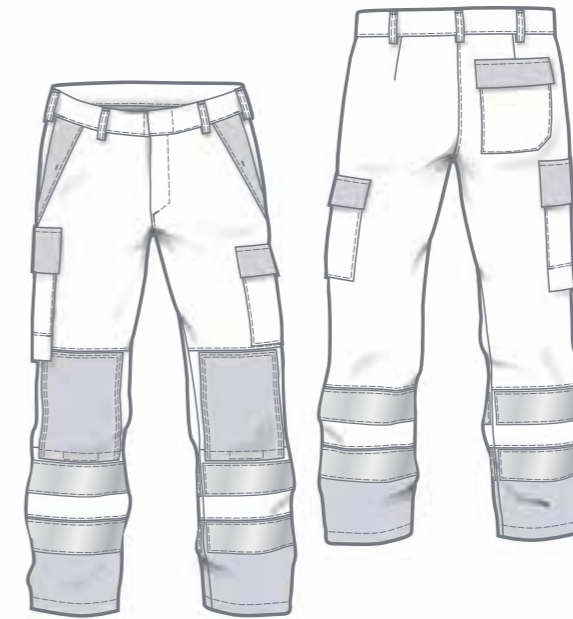
JACKET

ITEM 5220

ITEM 5230

SIZES: 44 - 66
90 - 114

- + With Lining
- + Plastic buttons and zips
- + Stand-up collar
- + Front has zip and hidden snap fasteners
- + 2 chest pockets with flap and hidden snap fasteners
- + 2 side pockets with velcro flaps
- + 1 inner phone pocket with velcro tab
- + Adjustable cuffs with velcro tabs
- + 2 reflective stripes on torso and sleeves, 1 reflective stripe on shoulders (5 cm / 2 inch wide)



929
high-vis orange
navy blue

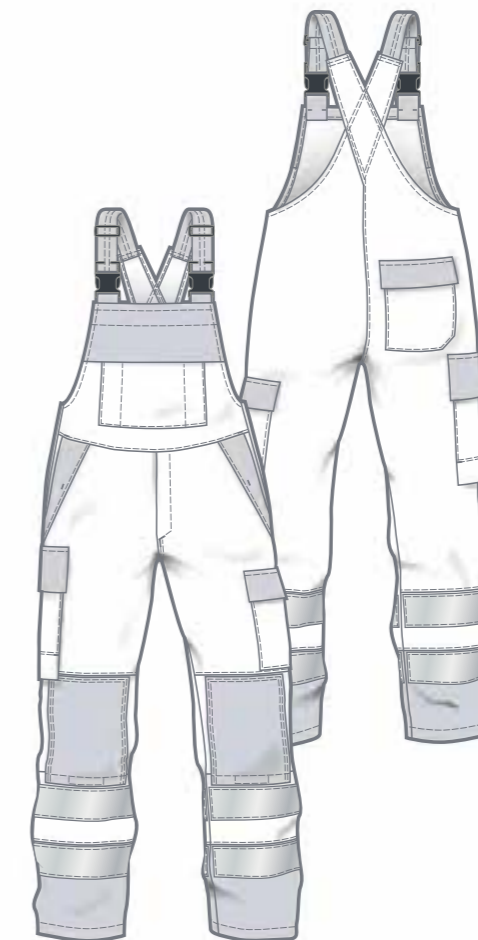
TROUSERS

ITEM 5221

ITEM 5231

SIZES: 44 - 66
90 - 114
22 - 33

- + With Lining
- + Plastic buttons and zips
- + 7 belt loops
- + Waistband with hidden button
- + 2 side pockets with hidden snap fastener
- + 1 hip pocket with flap and snap fasteners
- + 1 cargo pocket with flap and hidden snap fasteners + inner phone pocket
- + 1 internally and externally reinforced ruler pouch with flap and hidden snap fasteners
- + Knee reinforcement with opening for knee pads, with velcro
- + Zip fly
- + 2 reflective stripes on legs (7 cm / 2,75 inch wide)



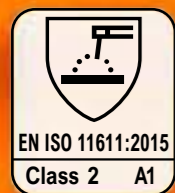
DUNGAREES

ITEM 5222

ITEM 5232

SIZES: 44 - 66
90 - 114
22 - 33

- + With Lining
- + Plastic buttons and zips
- + 1 large bib pocket with flap and snap fasteners + attached side pocket with 2 pen holders
- + 2 side fasteners with button, snap fastener and gusset
- + 2 side pockets with hidden snap fastener
- + 1 hip pocket with flap and snap fasteners
- + 1 cargo pocket with flap and hidden snap fasteners + inner phone pocket
- + 1 internally and externally reinforced ruler pouch with flap and hidden snap fasteners
- + Knee reinforcement with opening for knee pads, with velcro
- + Zip fly
- + 2 reflective stripes on legs (7 cm / 2,75 inch wide)



with/without
EN 13034

HIGH-VIS-MULTINORM HEAVY

CARE:



inherent flame retardant

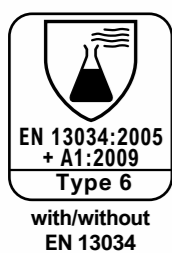
MATERIAL:

31% polyester / 28% modacrylic / 20% aramid
20% Viscose FR / 1% antistatic

LINING:

30% modacrylic / 30% viscose / 20% cotton
19% polyamide / 1% antistatic

320g/m²
+
170g/m²



JACKET

ART. 5120

ART. 5130

SIZES: 44 - 66
90 - 114

- + Plastic buttons and zips
- + Stand-up collar
- + Front has zip and hidden snap fasteners
- + 2 chest pockets with flap and hidden snap fasteners
- + 2 side pockets with velcro flaps
- + 1 inner phone pocket with velcro tab
- + Adjustable cuffs with velcro tabs
- + 2 reflective stripes on torso and sleeves, 1 reflective stripe on shoulders (5 cm / 2 inch wide)



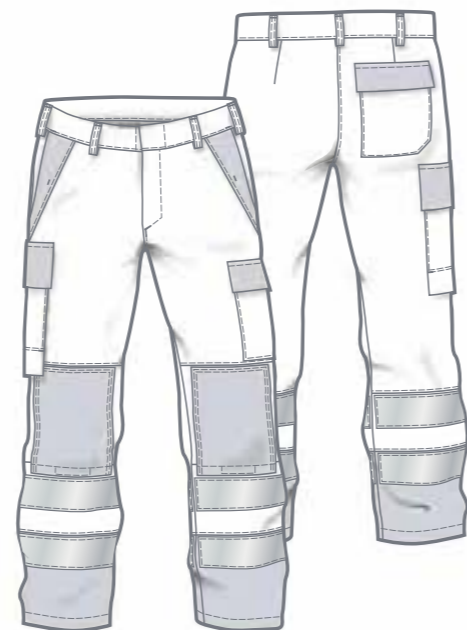
TROUSERS

ART. 5121

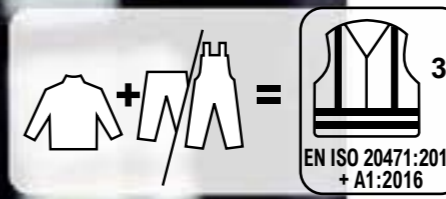
ART. 5131

SIZES: 44 - 66, 90 - 114, 22 - 33

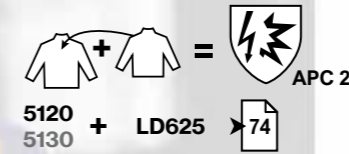
- + Plastic buttons and zips
- + 7 belt loops
- + Waistband with hidden button
- + 2 side pockets with hidden snap fastener
- + 1 hip pocket with flap and snap fasteners
- + 1 cargo pocket with flap and hidden snap fasteners + inner phone pocket
- + 1 internally and externally reinforced ruler pouch with flap and hidden snap fasteners
- + Knee reinforcement with opening for knee pads, with velcro
- + Zip fly
- + 2 reflective stripes on legs (7 cm / 2,75 inch wide)



929
high-vis orange
navy blue



Jacket + Shirt



5120 + LD625 → 74



DUNGAREES

ART. 5122

ART. 5132

SIZES: 44 - 66, 90 - 114, 22 - 33

- + Plastic buttons and zips
- + 1 large bib pocket with flap and snap fasteners + attached side pocket with 2 pen holders
- + 2 side fasteners with button, snap fastener and gusset
- + 2 side pockets with hidden snap fastener
- + 1 hip pocket with flap and snap fasteners
- + 1 cargo pocket with flap and hidden snap fasteners + inner phone pocket
- + 1 internally and externally reinforced ruler pouch with flap and hidden snap fasteners
- + Knee reinforcement with opening for knee pads, with velcro
- + Zip fly
- + 2 reflective stripes on legs (7 cm / 2,75 inch wide)

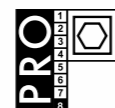
929
high-vis orange
navy blue

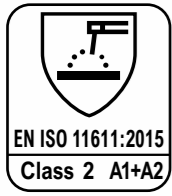
HIGH-VIS-MULTINORM LIGHT

inherent flame retardant

MATERIAL:
31% polyester / 28% modacrylic
20% aramid / 20% Viscose FR
1% antistatic

CARE:





ATPV of fabric:
18 cal/cm²



with/without
EN 13034



HIGH-MULTINORM HEAVY



048
navy blue

inherent flame retardant

CARE:



048
navy blue

TROUSERS

- D3 ITEM 4081
- D3 ITEM 4281
- D3 ITEM 5181
- D3 ITEM 5281

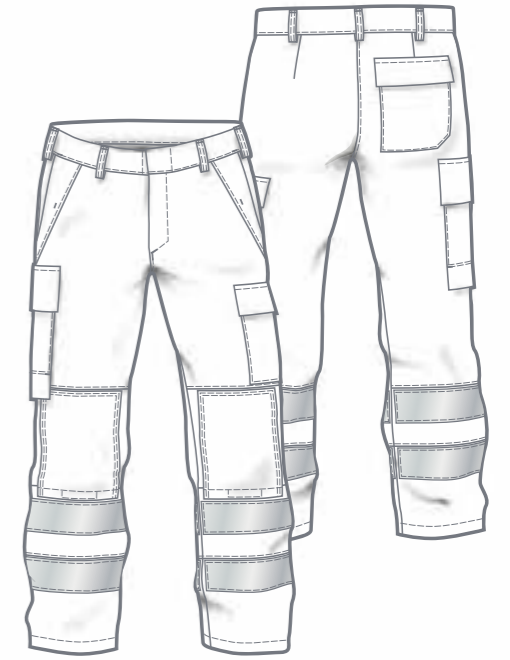
SIZES: 44 - 66
90 - 114
22 - 33

- + Plastic buttons and zips
- + 7 belt loops
- + Waistband with hidden button
- + 2 side pockets with hidden snap fastener
- + 1 hip pocket with flap and snap fasteners
- + 1 cargo pocket with flap and hidden snap fasteners + inner phone pocket
- + 1 internally and externally reinforced ruler pouch with flap and hidden snap fasteners
- + Knee reinforcement with opening for knee pads, with velcro
- + Zip fly
- + 2 reflective stripes on legs (7 cm / 2,75 inch wide)



MATERIAL:

52% cotton
22% modacrylic / 19% viscose
6% para-aramid / 1% antistatic

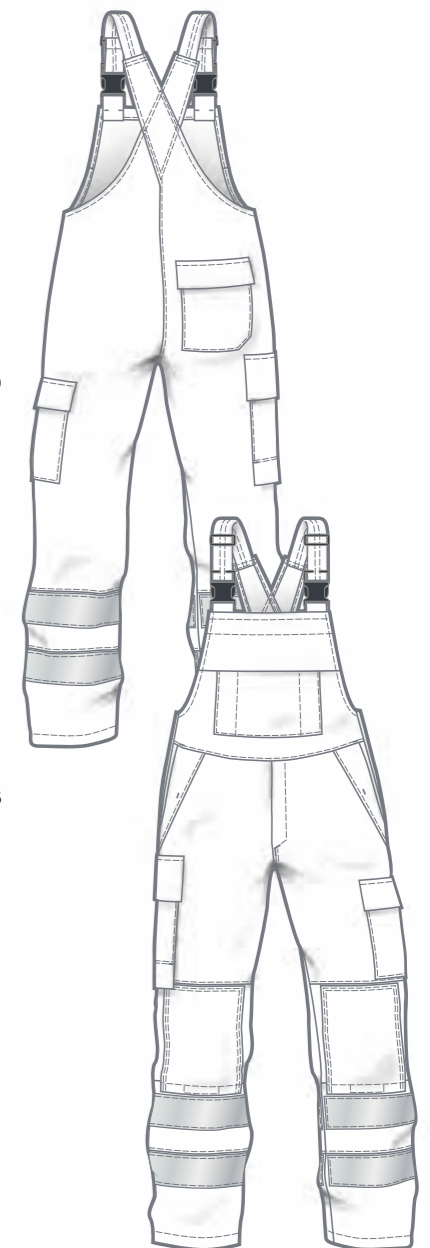


DUNGAREES

- D3 ITEM 4082
- D3 ITEM 4282
- D3 ITEM 5182
- D3 ITEM 5282

SIZES: 44 - 66
90 - 114
22 - 33

- + Plastic buttons and zips
- + 1 large bib pocket with flap and snap fasteners + attached side pocket with 2 pen holders
- + 2 side fasteners with button, snap fastener and gusset
- + 2 side pockets with hidden snap fastener
- + 1 hip pocket with flap and snap fasteners
- + 1 cargo pocket with flap and hidden snap fasteners + inner phone pocket
- + 1 internally and externally reinforced ruler pouch with flap and hidden snap fasteners
- + Knee reinforcement with opening for knee pads, with velcro
- + Zip fly
- + 2 reflective stripes on legs (7 cm / 2,75 inch wide)



LOGOS

C

20471

11611

11612

1149-5

61482-2

13034

343

JACKET

ITEM 6170

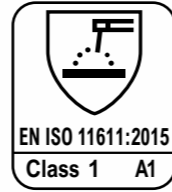
ITEM 6370

SIZES: 44 - 66
90 - 114

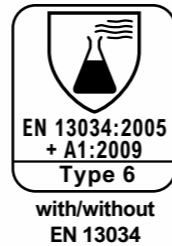
- + Plastic buttons and zips
- + Stand-up collar
- + Front has zip and hidden snap fasteners
- + 2 chest pockets with flap and hidden snap fasteners
- + 2 side pockets with velcro flaps
- + 1 inner phone pocket with velcro tab
- + Adjustable cuffs with velcro tabs
- + 2 reflective stripes on torso and sleeves, 1 reflective stripe on shoulders (5 cm / 2 inch wide)



048
navy blue



ATPV of fabric:
12 cal/cm²



TROUSERS

ITEM 6171

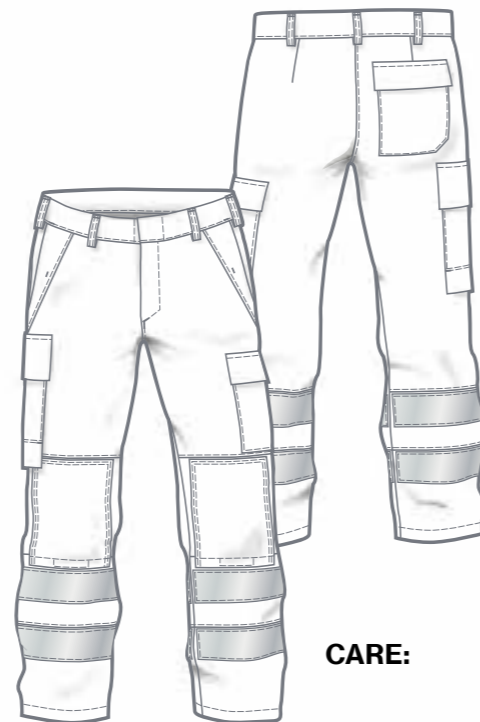
ITEM 6371

SIZES: 44 - 66
90 - 114
22 - 33

- + Plastic buttons and zips
- + 7 belt loops
- + Waistband with hidden button
- + 2 side pockets with hidden snap fastener
- + 1 hip pocket with flap and snap fasteners
- + 1 cargo pocket with flap and hidden snap fasteners + inner phone pocket
- + 1 internally and externally reinforced ruler pouch with flap and hidden snap fasteners
- + Knee reinforcement with opening for knee pads, with velcro
- + Zip fly
- + 2 reflective stripes on legs (7 cm / 2,75 inch wide)



048
navy blue



CARE:



HIGH-MULTINORM LIGHT

048
navy blue



DUNGAREES

ITEM 6172

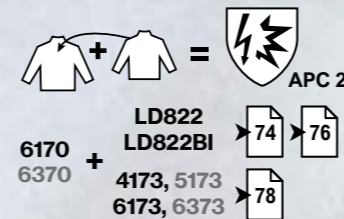
ITEM 6372

SIZES: 44 - 66
90 - 114
22 - 33

- + Plastic buttons and zips
- + 1 large bib pocket with flap and snap fasteners + attached side pocket with 2 pen holders
- + 2 side fasteners with button, snap fastener and gusset
- + 2 side pockets with hidden snap fastener
- + 1 hip pocket with flap and snap fasteners
- + 1 cargo pocket with flap and hidden snap fasteners + inner phone pocket
- + 1 internally and externally reinforced ruler pouch with flap and hidden snap fasteners
- + Knee reinforcement with opening for knee pads, with velcro
- + Zip fly
- + 2 reflective stripes on legs (7 cm / 2,75 inch wide)



Jacket + Shirt



inherent flame retardant

250g/m²

MATERIAL:

42% modacrylic / 25% cotton
22% polyamide / 10% viscose
1% antistatic

LOGOS

D

20471

11611

11612

1149-5

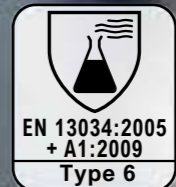
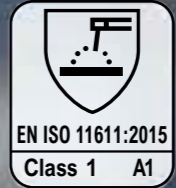
61482-2

13034

343



315g/m²
+
170g/m²



WEATHER HIGH-VIS-MULTINORM

LOGOS

20471

11611

11612

1149-5

61482-2

13034

343

WEATHER HIGH-VIS-MULTINORM



- + Jacket with lining
- + 2-way-zip



- + Embroidery on flap (PPE symbols)



- + Trousers with lining
- + With elasticated adjustable band



- + Adjustable trouser legs with tab and velcro



Attachable hood,
stowable in collar

Big flaps for emblems

Drawstring

Embroidery

JACKET



20471

11611

11612

1149-5

61482-2

13034

343



911
high-vis yellow
navy blue



JACKET

ITEM 4290

SIZES: XS - 5XL
S-L - 2XL-L

- + Completely lined
- + Fleece jacket 6083 (Page 43) can be combined to add warmth
- + Plastic buttons and zips
- + Stand-up collar with hood compartment
- + Hood (4290001) can be buttoned on
- + Front with zip and hidden snap fasteners
- + 2 chest pockets with flap and velcro
- + 2 side pockets with flap and velcro
- + 1 inner chest pocket with velcro
- + Adjustable cuffs with tab and velcro
- + Waist and hem with drawstring
- + Longer back
- + 2 reflective stripes on torso and sleeves, 1 reflective stripe on shoulders

 inherent flame retardant

CARE:

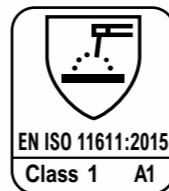


TROUSERS

ITEM 4291

SIZES: XS - 5XL
S-L - 2XL-L
S-K - 3XL-K

- + Completely lined
- + Plastic buttons and zips
- + Adjustable elasticated rubber braces, sewn on tightly
- + Waistband fastener with hidden button
- + 7 belt loops
- + Elasticated adjustable back waistband
- + 2 side pockets with hidden snap fastener
- + 1 hip pocket with flap and velcro
- + 1 cargo pocket (bellow pocket - rear and bottom) with flap and velcro
- + 1 ruler pouch with flap and velcro
- + Zip fly
- + Adjustable leg hems with tab and velcro
- + 2 reflective stripes on legs (5 cm)



WEATHER HIGH-VIS-MULTINORM



3 - Water transmission resistance
water column > 1.500 mm
3 - Water vapour transmission resistance (incl. lining)
 R_{et} 17 m²Pa/W

315g/m²
+
170g/m²

MATERIAL:

55% modacrylic / 43% cotton / 2% antistatic polyurethane membrane

LINING:

55% modacrylic / 43% cotton / 2% antistatic

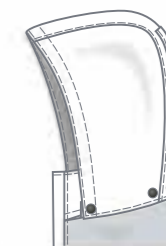


911
high-vis yellow

ITEM 4290 001

SIZE: 0

- + Hood can be attached to jacket (4290) with press studs
- + Adjustable elastic cord
- + With back tab and velcro



LOGOS

E

20471

11611

11612

1149-5

61482-2

13034

343



HI VIS FLEECE JACKET

ITEM 6084

SIZES: XS - 5XL
S-L - 2XL-L

- + Front and sleeves lined
- + Can be combined to add warmth in Weather jacket: 4290
- + Stand-up collar
- + Front with zip and hidden snap fasteners
- + 2 inner chest pockets with velcro, left with pen compartment
- + 2 side pockets with zip and velcro
- + Adjustable hem with elasticated band
- + Torso and sleeves with 2 reflective stripes, 1 reflective stripe on shoulders (5 cm / 1 inch wide)



911
high-vis yellow/navy blue

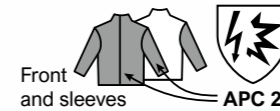


CARE:



360g/m²
+
170g/m²

MATERIAL: 48% modacrylic / 32% cotton
18% polyester / 2% antistatic
LINING: 30% modacrylic type F / 30% viscose
20% cotton / 19% polyamide / 1% antistatic



FLEECE JACKET

ITEM 6083

SIZES: XS - 5XL
S-L - 2XL-L

- + Front and sleeves lined
- + Can be combined to add warmth in Weather jacket: 4290
- + Stand-up collar
- + Front with zip and hidden snap fasteners
- + 2 inner chest pockets with velcro, left with pen compartment
- + 2 side pockets with zip and velcro
- + Adjustable hem with elasticated band



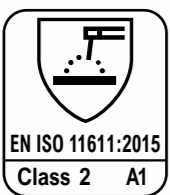
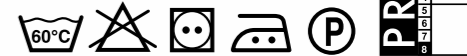
085
dark navy blue



360g/m²
+
170g/m²

MATERIAL: 48% modacrylic / 32% cotton
18% polyester / 2% antistatic
LINING: 30% modacrylic type F / 30% viscose
20% cotton / 19% polyamide / 1% antistatic

CARE:



ATPV of fabric:
10 cal/cm²



with/without
EN 13034

515g/m²

MATERIAL:

38% modacrylic / 28% cotton
17% aramid / 7,5% polyester
5% polyurethane / 4% polyamide
0,5% antistatic
multilayer laminate with
polyurethane membrane
and fleece inside

CARE:



SOFTSHELL JACKET

ITEM 4908

ITEM 6908

SIZES: XS - 4XL
S-L - XL-L

- + Stand-up collar
- + Front with zip and velcro, hem bottom with snap fastener
- + 1 left chest pocket, with zip and velcro
- + 2 side pockets with zip
- + 1 inner left chest pocket, with zip + pen pocket
- + Seam with elasticated adjustable waistband
- + Shoulder, sleeves and torso with reflective stripes



921
navy blue
black



699
dark grey
black

ecoRover
SAFETY PLUS



LOGOS

N

20471

11611

11612

1149-5

61482-2

13034

343

430g/m²

EN ISO 11612:2015
A1+A2 B1 C1 D3 E3 F1
with/without D3

EN ISO 11611:2015
Class 2 A1+A2

EN 1149-5:2018

EN 61482-2:2020
APC 1

340g/m²

EN ISO 11612:2015
A1+A2 B1 C1 D2 E2 F1
with/without D2

EN ISO 11611:2015
Class 1 A1+A2

EN 1149-5:2018

EN 61482-2:2020
APC 1

FOUNDRY + WELDER

HEAVY

LIGHT

LOGOS

Z0471

11611

11612

1149-5

61482-2

13034

343



EN ISO 11612:2015
A1+A2 B1 C1 D3 E3 F1
with/without D3



EN ISO 11611:2015
Class 2 A1+A2



EN 1149-5:2018



EN 61482-2:2020
APC 1

ATPV of fabric:
15,4 cal/cm²



FOUNDRY + WELDER HEAVY



346
blue
navy blue



524
navy blue
blue



742
navy blue
grey



840
grey
navy blue



330
grey
orange



JACKET



D3 ITEM 6100R

~~D3~~ ITEM 6110R



D3 ITEM 6100R371R

~~D3~~ ITEM 6110R371R

SIZES: 44 - 66
90 - 114

- + Stand-up collar
- + Hidden snap fastener placket
- + 2 chest pockets with integrated flap and hidden snap fastener
- + 2 side pockets with flap and velcro
- + 1 inner chest pocket left, with snap fastener
- + Adjustable cuffs with snap fasteners

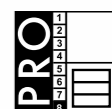
OPTIONAL:

- + Without ISO 11612 - D3 (molten aluminium)
- + Sleeves and shoulders with 1 reflective stripe

430g/m²

MATERIAL:
52% cotton
37% modacrylic
10% viscose
1% antistatic

CARE:



LOGOS

F

20471

11611

11612

1149-5

61482-2

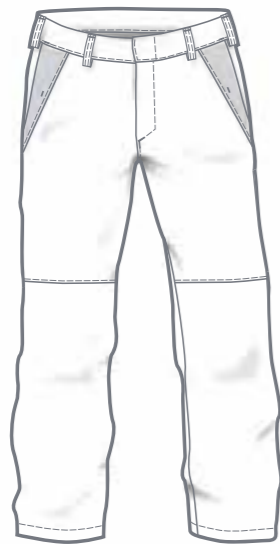
13034

343



ATPV of fabric: 15,4 cal/cm²

FOUNDRY + WELDER HEAVY



TROUSERS

- D3 ITEM 6101R**
- ~~ISO 11612~~ **ITEM 6111R**
- D3 ITEM 6101000R**
- ~~ISO 11612~~ **ITEM 6111000R**
- D3 ITEM 6101777R**
- ~~ISO 11612~~ **ITEM 6111777R**
- D3 ITEM 6101311R**
- ~~ISO 11612~~ **ITEM 6111311R**
- D3 ITEM 6101999R**
- ~~ISO 11612~~ **ITEM 6111999R**

SIZES: 44 - 66
90 - 114
22 - 33

- + 7 belt loops
- + Waistband fastener with hidden jeans button
- + Zip fly
- + 2 side pockets with hidden snap fastener
- + 1 hip pocket with flap and hidden snap fasteners
- + 1 cargo pocket with flap and hidden snap fasteners
- + 1 reinforced ruler pouch
- + With flap and hidden snap fasteners

OPTIONAL:

- + Without ISO 11612 - D3 (molten aluminium)
- + Without cargo pocket, ruler pouch
- + Knee reinforcement with opening for knee pads, with velcro
- + Each leg with 1 reflective stripe



346
blue/navy blue



524
navy blue/blue

742
navy blue/grey



840
grey/navy blue

330
grey/orange



DUNGAREES

- D3 ITEM 6102R**
- ~~ISO 11612~~ **ITEM 6112R**
- D3 ITEM 6102000R**
- ~~ISO 11612~~ **ITEM 6112000R**
- D3 ITEM 6102777R**
- ~~ISO 11612~~ **ITEM 6112777R**
- D3 ITEM 6102311R**
- ~~ISO 11612~~ **ITEM 6112311R**
- D3 ITEM 6102999R**
- ~~ISO 11612~~ **ITEM 6112999R**

SIZES: 44 - 66
90 - 114
22 - 33

- + Adjustable elastic straps with side release buckles
- + High bib back
- + 1 large bib pocket with flap and hidden snap fastener + attached pocket, with 2 pen holders
- + 2 side pockets with hidden snap fastener
- + 1 hip pocket with flap and hidden snap fasteners
- + 1 cargo pocket with flap and hidden snap fasteners
- + 1 reinforced ruler pouch with flap and hidden snap fasteners
- + Zip fly
- + 2 side fasteners with jeans button, snap fastener and gusset

OPTIONAL:

- + Without ISO 11612 - D3 (molten aluminium)
- + Without cargo pocket, ruler pouch
- + Knee reinforcement with opening for knee pads, with velcro
- + Each leg with 1 reflective stripe



346
blue/navy blue



524
navy blue/blue

742
navy blue/grey



840
grey/navy blue

330
grey/orange

430g/m²

MATERIAL:
52% cotton
37% modacrylic
10% viscose
1% antistatic

CARE:



VARIANT: With lower double layered trouser legs



D3



TROUSERS
ITEM 6101D311
DUNGAREES
ITEM 6102D311

- + Reflective stripes
- Colour 330 grey/orange

LOGOS

F

20471

11611

11612

1149-5

61482-2

13034

343



ATPV of fabric:
9,7 cal/cm²



346
blue
navy blue



524
navy blue
blue



840
grey
navy blue



330
grey
orange



JACKET

D2 ITEM 6200R
 ~~D2~~ ITEM 6220R

D2 ITEM 6200R371R
 ~~D2~~ ITEM 6220R371R

SIZES: 44 - 66
90 - 114

- + Stand-up collar
- + Hidden snap fastener placket
- + 2 chest pockets with integrated flap and hidden snap fastener
- + 2 side pockets with flap and velcro
- + 1 inner chest pocket left, with snap fastener
- + Adjustable cuffs with snap fasteners

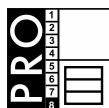
OPTIONAL:

- + Without ISO 11612 - D2 (molten aluminium)
- + Sleeves and shoulders with 1 reflective stripe



MATERIAL:
50% cotton
39% modacrylic
10% viscose
1% antistatic

CARE:



FOUNDRY+WELDER LIGHT



ATPV of fabric:
9,7 cal/cm²

FOUNDRY + WELDER LIGHT



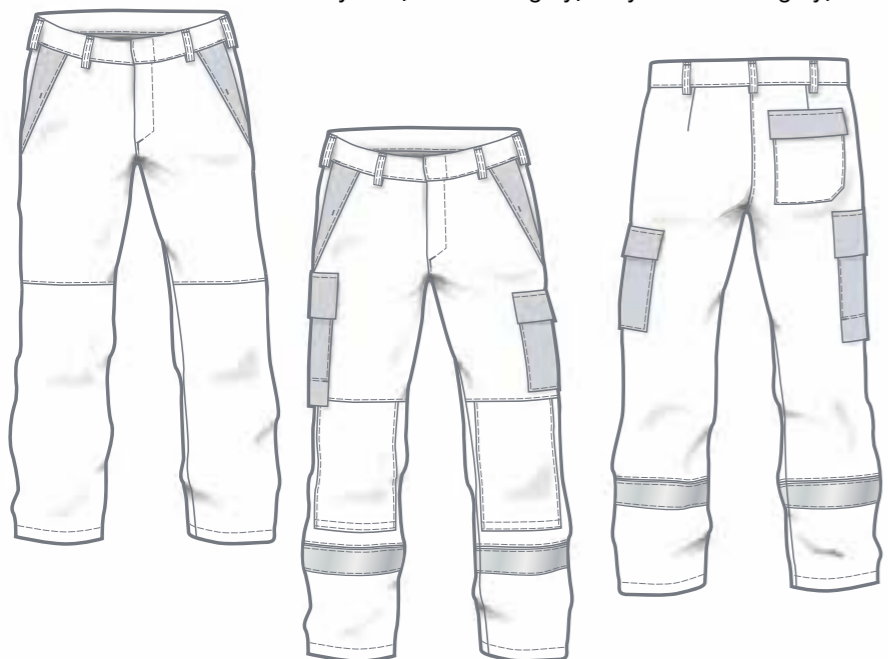
346
blue/navy blue



524
navy blue/blue

840
grey/navy blue

330
grey/orange



TROUSERS

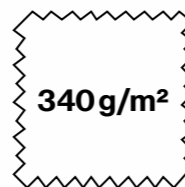
- D2 ITEM 6201R**
- ~~D2~~ **ITEM 6221R**
- D2 ITEM 6201000R**
- ~~D2~~ **ITEM 6221000R**
- D2 ITEM 6201777R**
- ~~D2~~ **ITEM 6221777R**
- D2 ITEM 6201311R**
- ~~D2~~ **ITEM 6221311R**
- D2 ITEM 6201999R**
- ~~D2~~ **ITEM 6221999R**

SIZES: 44 - 66
90 - 114
22 - 33

- + 7 belt loops
- + Waistband fastener with hidden jeans button
- + Zip fly
- + 2 side pockets with hidden snap fastener
- + 1 hip pocket with flap and hidden snap fasteners
- + 1 cargo pocket with flap and hidden snap fasteners
- + 1 reinforced ruler pouch with flap and hidden snap fasteners
- + With flap and hidden snap fasteners

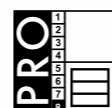
OPTIONAL:

- + Without ISO 11612 - D2 (molten aluminium)
- + Without cargo pocket, ruler pouch
- + Knee reinforcement with opening for knee pads, with velcro
- + Each leg with 1 reflective stripe



MATERIAL:
50% cotton
39% modacrylic
10% viscose
1% antistatic

CARE:



DUNGAREES

- D2 ITEM 6202R**
- ~~D2~~ **ITEM 6222R**
- D2 ITEM 6202000R**
- ~~D2~~ **ITEM 6222000R**
- D2 ITEM 6202777R**
- ~~D2~~ **ITEM 6222777R**
- D2 ITEM 6202311R**
- ~~D2~~ **ITEM 6222311R**
- D2 ITEM 6202999R**
- ~~D2~~ **ITEM 6222999R**

SIZES: 44 - 66
90 - 114
22 - 33

- + Adjustable elastic straps with side release buckles
- + High bib back
- + 1 large bib pocket with flap and hidden snap fastener + attached pocket, with 2 pen holders
- + 2 side pockets with hidden snap fastener
- + 1 hip pocket with flap and hidden snap fasteners
- + 1 cargo pocket with flap and hidden snap fasteners
- + 1 reinforced ruler pouch with flap and hidden snap fasteners
- + Zip fly
- + 2 side fasteners with jeans button, snap fastener and gusset

OPTIONAL:

- + Without ISO 11612 - D2 (molten aluminium)
- + Without cargo pocket, ruler pouch
- + Knee reinforcement with opening for knee pads, with velcro
- + Each leg with 1 reflective stripe

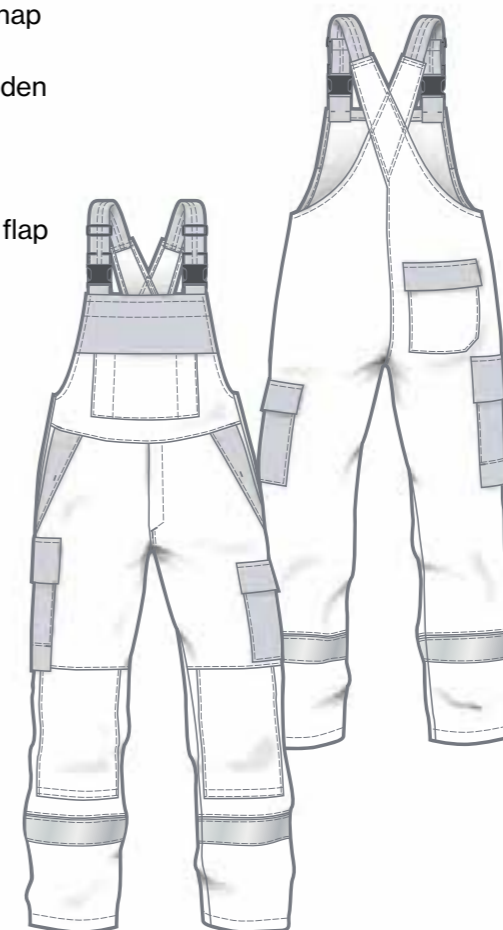


346
blue/navy blue



524
navy blue/blue

840
grey/navy blue



330
grey/orange

LOGOS

F



20471



11611



11612



1149-5



61482-2



13034



343

WELDER CLASS 1



flame retardant
equipped



159
blue



008
grey

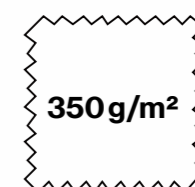


JACKET

ITEM 5205

SIZES: 44/46 - 64/66
90/94 - 114/118

- + Lapel/turn down collar
- + Hidden snap fastener placket
- + 2 side pockets accessible from the sides with hidden snap fastener
- + 1 left chest pocket with integrated flap and hidden snap fastener
- + 1 inner right chest pocket
- + Adjustable sleeve cuffs
- + Ventilation openings at chest height and back yoke



MATERIAL:
64% cotton
35% polyester
1% antistatic

CARE:



LOGOS

H

20471

11611

11612

1149-5

61482-2

13034

343

WELDER CLASS 1



159
blue



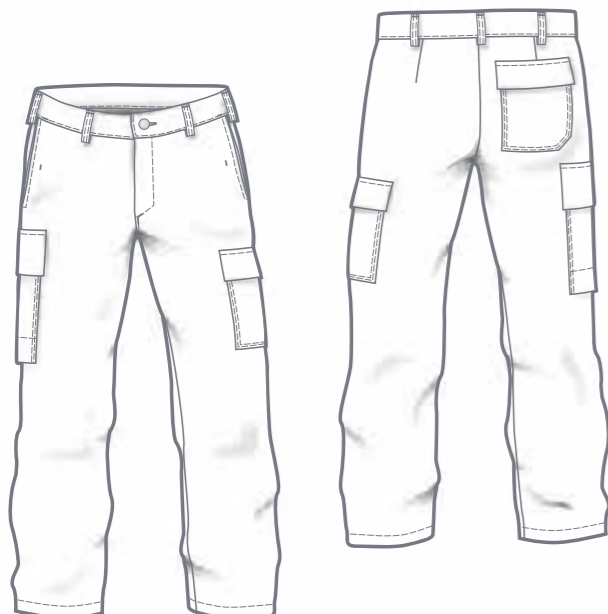
008
grey

TROUSERS

ITEM 5201

SIZES: 44 - 66
90 - 114
22 - 33

- + 7 belt loops
- + 2 side pockets with snap fastener
- + 1 cargo pocket with flap and snap fastener
- + 1 internally and externally reinforced ruler pouch with flap and hidden snap fasteners
- + Zip fly



159
blue



008
grey

DUNGAREES

ITEM 5202 000

SIZES: 44 - 66
90 - 114
22 - 33

- + Adjustable elastic straps
- + High back
- + 1 inner bib pocket with velcro
- + 1 adjustable side fastener
- + 2 side pockets with snap fastener
- + 1 cargo pocket with flap and snap fastener
- + 1 internally and externally reinforced ruler pouch with flap and hidden snap fasteners
- + Zip fly



MATERIAL:
350 g/m² 64% cotton
35% polyester
1% antistatic

CARE:



flame retardant
equipped



EN ISO 11612:2015
A1+A2 B1 C1 E2 F1



flame retardant
equipped



008
grey

JACKET

ITEM 5420 002

SIZES: 44 - 66
90 - 114

- + Lapel/turn down collar
- + Hidden snap fastener placket
- + 2 chest patch pockets with integrated flap and snap fastener
- + 2 inner chest pockets
- + Adjustable cuffs
- + Ventilation openings at chest height



420 g/m²

MATERIAL:
100% cotton



CARE:



WELDER CLASS 2



TROUSERS

ITEM 5421 002

SIZES: 44 - 66
90 - 114

- + 7 belt loops
- + 2 side pockets with snap fastener
- + 1 internally and externally reinforced ruler pouch, divided, with flap and snap fasteners
- + Button fly
- + Adjustable leg hems with snap fasteners

008
grey



MATERIAL:
100% cotton

CARE:



WELDER CLASS 2



flame retardant
equipped



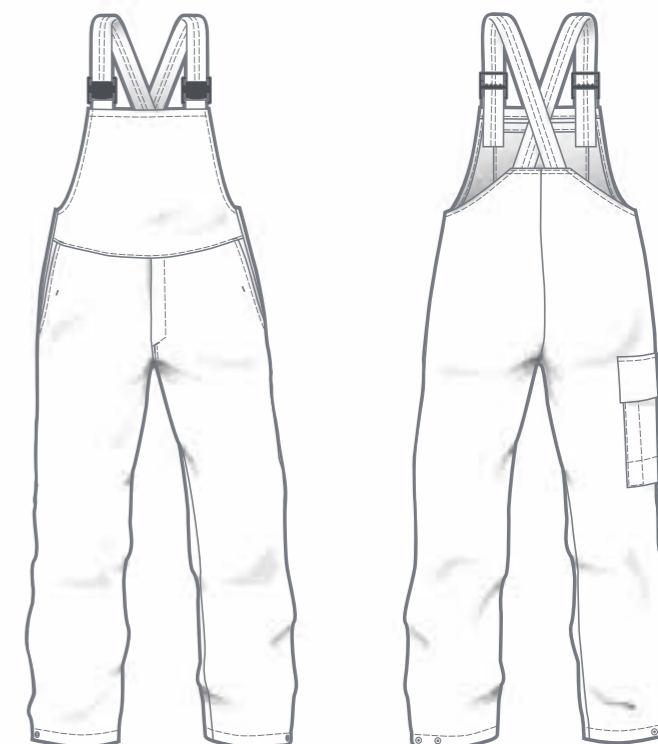
DUNGAREES

ITEM 5422 002

SIZES: 44 - 66
90 - 114

- + Adjustable elastic straps
- + 1 inner bib pocket with snap fastener
- + Adjustable side fastener with hidden jeans button
- + 2 side pockets with snap fastener
- + 1 internally and externally reinforced ruler pouch, divided, with flap and snap fasteners
- + Button fly
- + Adjustable leg hems with snap fasteners

008
grey



LOGOS

20471

11611

11612

1149-5

61482-2

13034

343

MULTINORM

1-PLY

2-PLY



Feels so right

- + Lyocell fibers (TENCEL™) are made from wood.
- + Environmentally conscious manufacturing process with more than 99% recycling of process materials into the production cycle.
- + Absorbs moisture more efficiently than cotton, dry feeling.

TENCEL™ is a brand of Lenzing AG

1-PLY



MATERIAL:

50% lyocell (TENCEL™)
30% cotton
19% polyester
1% antistatic

CARE:



flame retardant equipped



346
blue
navy blue



524
navy blue
blue



840
grey
navy blue



842
grey
red

JACKET



ITEM 6150

ITEM 7150



ITEM 6150 371

ITEM 7150 371

SIZES: 44 - 66
90 - 114

- + Stand-up collar
- + Hidden snap fastener placket
- + 2 chest pockets with integrated flap and hidden snap fastener
- + 2 side pockets with velcro
- + 1 inner chest pocket left, with snap fastener
- + Adjustable cuffs with snap fasteners

OPTIONAL:

- + Without EN 13034 (chemical protection)
- + Sleeves and shoulders with 1 reflective stripe



LOGOS

G

20471

11611

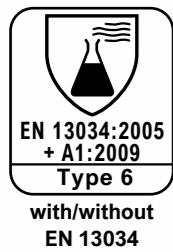
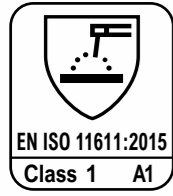
11612

1149-5

61482-2

13034

343



346
blue
navy blue

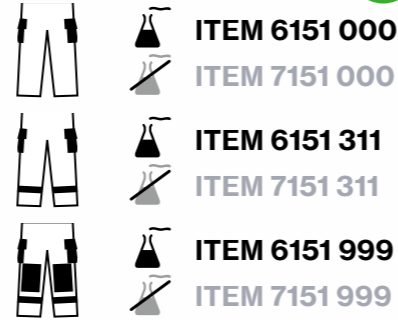


524
navy blue
blue

840
grey
navy blue

842
grey
red

TROUSERS



ITEM 6151 000

ITEM 7151 000

ITEM 6151 311

ITEM 7151 311

ITEM 6151 999

ITEM 7151 999

SIZES: 44 - 66
90 - 114
22 - 33

- + 7 belt loops
- + Waistband fastener with hidden jeans button
- + Zip fly
- + 2 side pockets with hidden snap fastener
- + 1 hip pocket with flap and hidden snap fasteners
- + 1 cargo pocket with flap and hidden snap fasteners
- + 1 reinforced ruler pouch
- + With flap and hidden snap fasteners

OPTIONAL:

- + Without EN 13034 (chemical protection)
- + Knee reinforcement with opening for knee pads, with velcro
- + Each leg with 1 reflective stripe

MULTINORM 1-LAGIG

DUNGAREES



ITEM 6152 000

ITEM 7152 000

ITEM 6152 311

ITEM 7152 311

ITEM 6152 999

ITEM 7152 999

SIZES: 44 - 66
90 - 114
22 - 33

- + Adjustable elastic straps with cam lock buckle
- + High bib back
- + 1 large bib pocket with flap and hidden snap fasteners + attached pocket, with 2 pen holders
- + 2 side pockets with hidden snap fastener
- + 1 hip pocket with flap and hidden snap fasteners
- + 1 cargo pocket with flap and hidden snap fasteners
- + 1 reinforced ruler pouch with flap and hidden snap fasteners
- + Zip fly
- + 2 side fasteners with jeans button, snap fastener and gusset

OPTIONAL:

- + Without EN 13034 (chemical protection)
- + Knee reinforcement with opening for knee pads, with velcro
- + Each leg with 1 reflective stripe



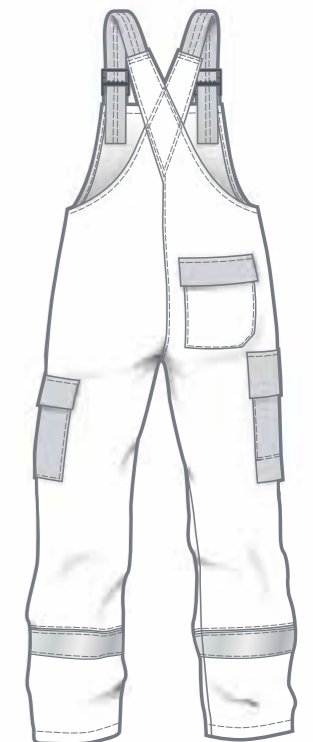
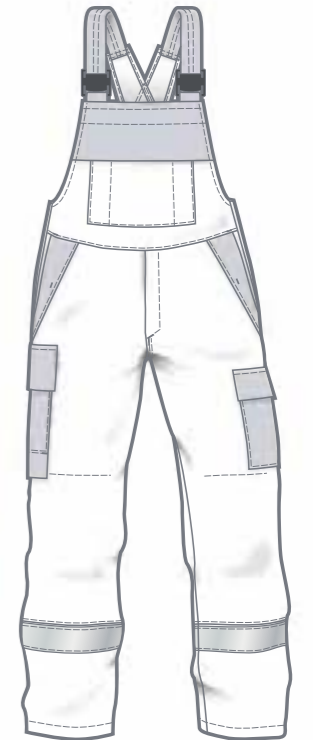
346
blue
navy blue



524
navy blue
blue

840
grey
navy blue

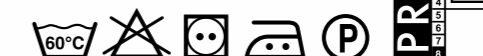
842
grey
red



Tencel™
Feels so right

MATERIAL:
50% lyocell (TENCEL™)
30% cotton
19% polyester
1% antistatic

CARE:



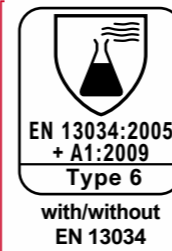
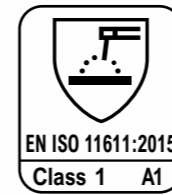
flame retardant
equipped

MULTINORM

Model design according
to HACCP
DIN 10524



flame retardant
equipped

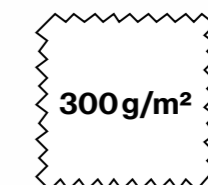


WITHOUT OUTSIDE
POCKETS

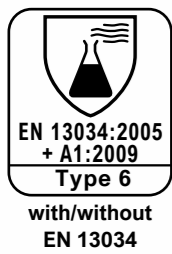
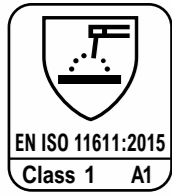
WITHOUT BIB POCKET



In their design, the models correspond with the requirements of the DIN 10524 standard regarding pockets, sleeve length of the jacket, fasteners and cut design. Confirmation by an accredited testing institute is available on demand.



MATERIAL:
50% lyocell (TENCEL™)
30% cotton
19% polyester
1% antistatic



MULTINORM 1-PLY

JACKET



ITEM 6150 222

ITEM 7150 222

SIZES: 44 - 66
90 - 114

- + Stand-up collar
- + Hidden snap fastener placket
- + No outside pockets
- + 1 inner chest pocket with snap fastener
- + 1 inner side pocket with snap fastener
- + Adjustable cuffs with snap fasteners

OPTIONAL:

- + Without EN 13034 (chemical protection)



346
blue
navy blue



842
grey
red



TROUSERS



ITEM 6151 000

ITEM 7151 000



ITEM 6151 777

ITEM 7151 777

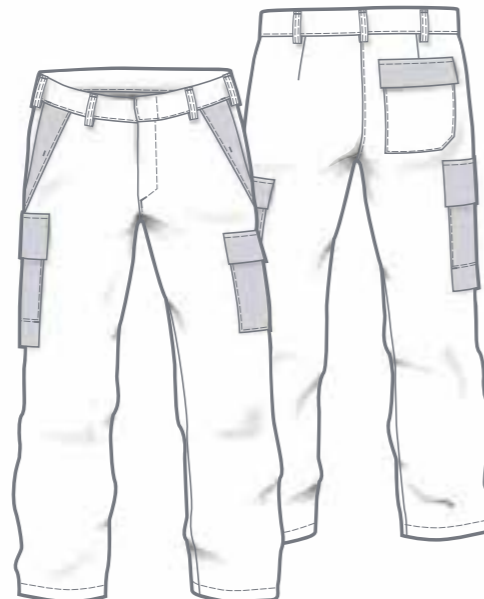
SIZES: 44 - 66
90 - 114
22 - 33



- + 7 belt loops
- + Waistband fastener with hidden jeans button
- + Zip fly
- + 2 side pockets with hidden snap fastener
- + 1 hip pocket with flap and hidden snap fasteners
- + 1 cargo pocket with flap and hidden snap fasteners
- + 1 reinforced ruler pouch with flap and hidden snap fasteners

OPTIONAL:

- + Without EN 13034 (chemical protection)
- + Knee reinforcement with opening for knee pads, with velcro



DESIGN ACCORDING TO HACCP DIN 10524

DUNGAREES



ITEM 6152 222

ITEM 7152 222



ITEM 6152 444

ITEM 7152 444

SIZES: 44 - 66
90 - 114
22 - 33

- + Adjustable elastic straps with cam lock buckle
- + High bib back
- + No bib pocket
- + 2 side fasteners
- + 1 hip pocket with flap and snap fasteners
- + 2 side pockets with snap fastener
- + 1 left cargo pocket with flap and snap fasteners
- + 1 internally and externally reinforced right ruler pouch with flap and snap fasteners
- + Zip fly

OPTIONAL:

- + Without EN 13034 (chemical protection)
- + Knee reinforcement with opening for knee pads, with velcro



346
blue
navy blue



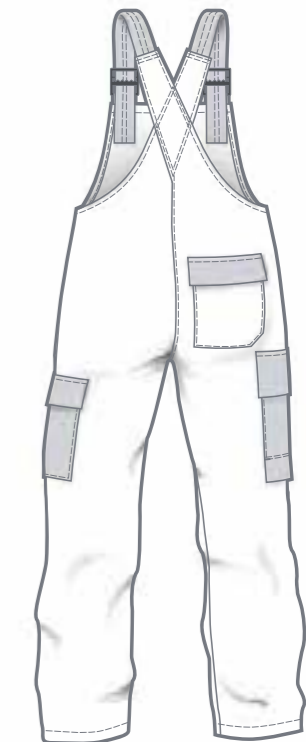
842
grey
red



346
blue
navy blue



842
grey
red



MATERIAL:
50% lyocell (TENCEL™)
30% cotton
19% polyester
1% antistatic

CARE:



JACKET



ITEM 6250 371

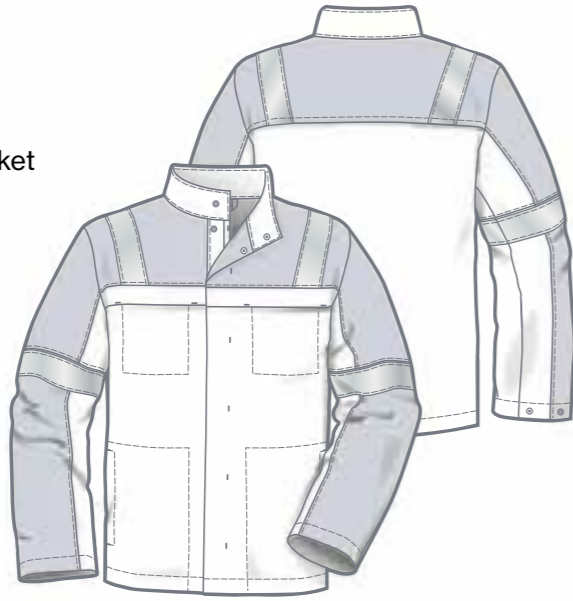
ITEM 7250 371

SIZES: 44 - 66
90 - 114

- + Completely lined
- + Stand-up collar
- + Hidden snap fastener placket
- + 2 chest pockets with integrated flap and hidden snap fastener
- + 2 side pockets with velcro
- + 1 inner chest pocket left, with snap fastener
- + Adjustable cuffs with snap fasteners
- + Sleeves and shoulders with 1 reflective stripe

OPTIONAL:

- + Without EN 13034 (chemical protection)



346
blue
navy blue



842
grey
red

330g/m²
+
140g/m²

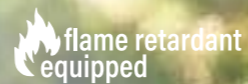
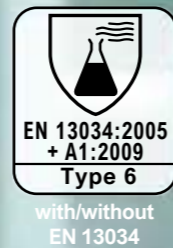
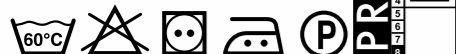
MATERIAL:

50% lyocell (TENCEL™) / 30% cotton
19% polyester / 1% antistatic

LINING:

74% viscose FR / 15% para-aramide
10% polyamide / 1% antistatic

CARE:



MULTINORM 2-PLY

LOGOS

G

20471

11611

11612

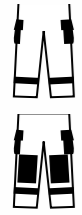
1149-5

61482-2

13034

343

TROUSERS



ITEM 6251 311

ITEM 7251 311

ITEM 6251 999

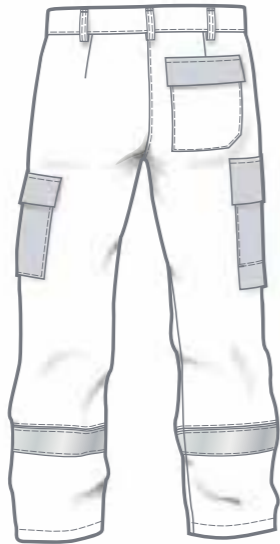
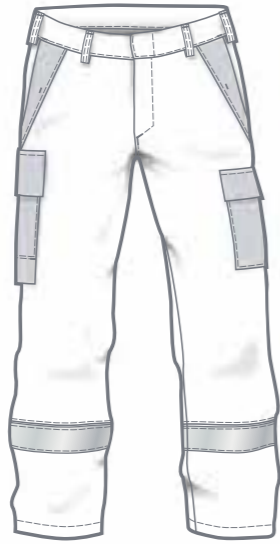
ITEM 7251 999

SIZES: 44 - 66
90 - 114
22 - 33

- + Completely lined
- + 7 belt loops
- + Waistband fastener with hidden jeans button
- + Zip fly
- + 2 side pockets with hidden snap fastener
- + 1 hip pocket with flap and hidden snap fasteners
- + 1 cargo pocket with flap and hidden snap fasteners
- + 1 reinforced ruler pouch
- + With flap and hidden snap fasteners

OPTIONAL:

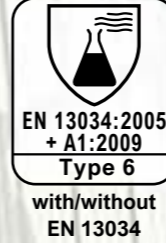
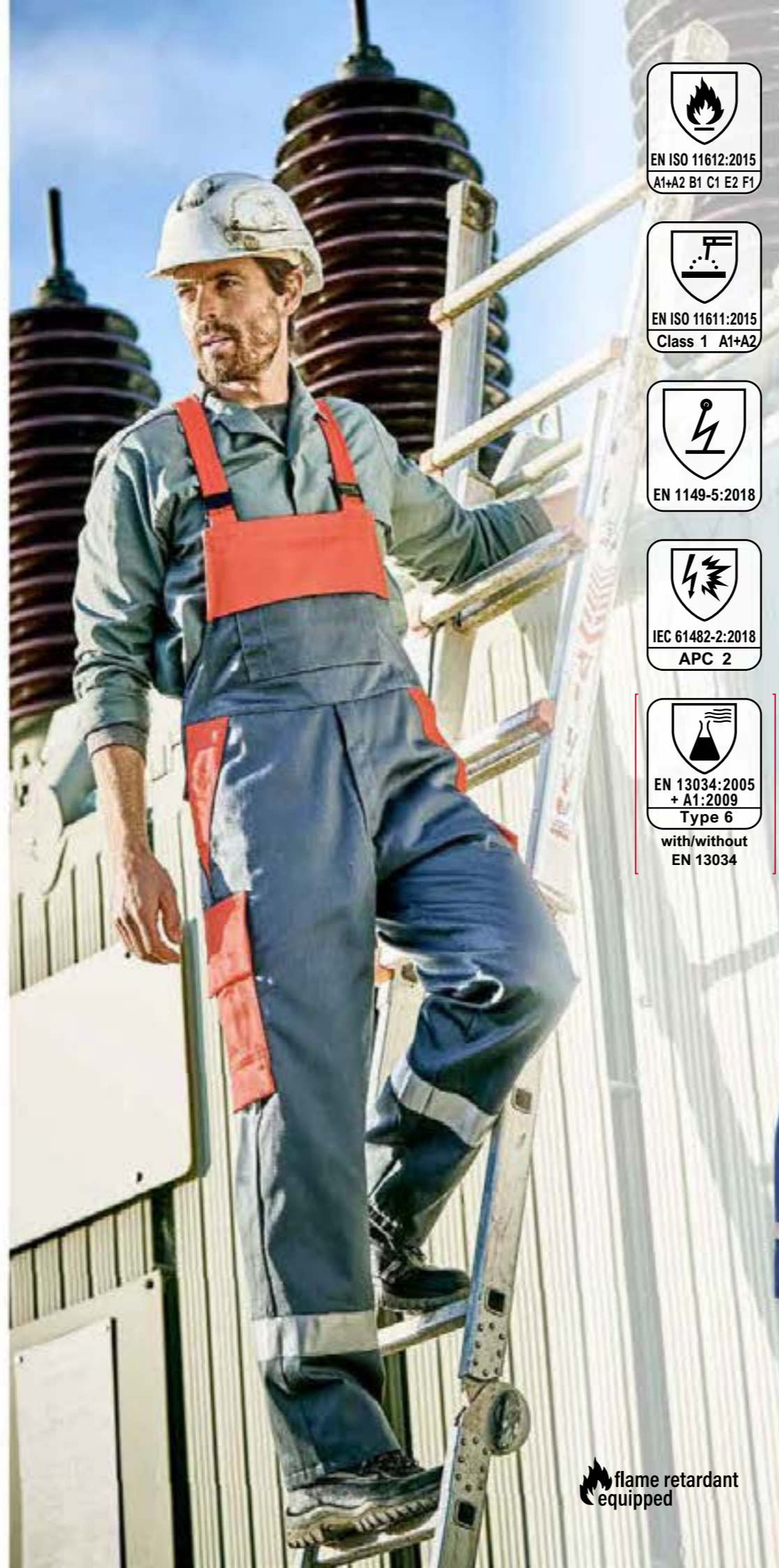
- + Without EN 13034 (chemical protection)
- + Knee reinforcement with opening for knee pads, with velcro



346
blue
navy blue



842
grey
red



MULTINORM 2-PLY

DUNGAREES



ITEM 6252 311

ITEM 7252 311

ITEM 6252 999

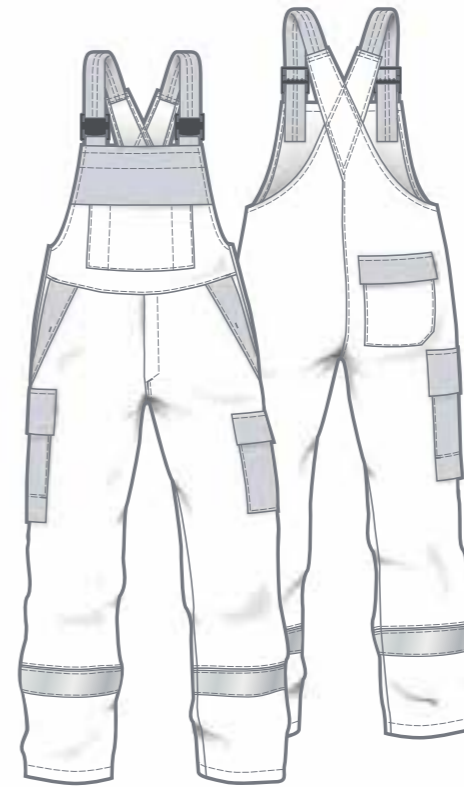
ITEM 7252 999

SIZES: 44 - 66
90 - 114
22 - 33

- + Completely lined
- + Adjustable elastic straps with cam lock buckle
- + High bib back
- + 1 large bib pocket with flap and hidden snap fasteners + attached pocket, with 2 pen holders
- + 2 side pockets with hidden snap fastener
- + 1 hip pocket with flap and hidden snap fasteners
- + 1 cargo pocket with flap and hidden snap fasteners
- + 1 reinforced ruler pouch with flap and hidden snap fasteners
- + Zip fly
- + 2 side fasteners with jeans button, snap fastener and gusset

OPTIONAL:

- + Without EN 13034 (chemical protection)
- + Knee reinforcement with opening for knee pads, with velcro



346
blue
navy blue

842
grey
red

330g/m²
+
140g/m²



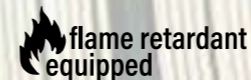
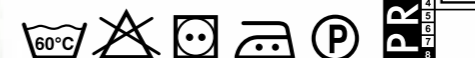
MATERIAL:

50% lyocell (TENCEL™)
30% cotton / 19% polyester
1% antistatic

LINING:

74% viscose FR / 15% para-aramide
10% polyamide / 1% antistatic

CARE:





ATPV of fabric: 5,4 cal/cm²



911
high-vis yellow
navy blue

4170 6170
5170 6370



Jacket + Polo shirt



MULTINORM POLO SHIRT

ITEM LD822BI



SIZES: S - 4XL

- + Polo collar with button placket
- + Long sleeved with cuffs
- + Standard logos on sleeve

220 g/m² PIQUÉ, XISPAL®

MATERIAL:

50% cotton / 39% modacrylic
10% viscose / 1% antistatic

CARE:



ATPV of fabric: 6,3 cal/cm²



929
high-vis orange
navy blue

5120 5130



Jacket + Polo shirt



MULTINORM POLO SHIRT

ITEM LD625

SIZES: S - 4XL

- + Polo collar with hidden button placket
- + Long sleeved with cuffs
- + Standard logos on sleeve

250 g/m² PIQUÉ, XISPAL®

MATERIAL:

40% polyester / 40% modacrylic
19% meta-aramide / 1% antistatic

CARE:



Inherent flame retardant

ADDITIONAL ITEMS

LOGOS

J



20471



11611



11612



1149-5



61482-2



13034



343



ATPV of fabric:
5,4 cal/cm²



039
navy blue

MULTINORM POLO SHIRT

ITEM LD822



SIZES: S - 5XL

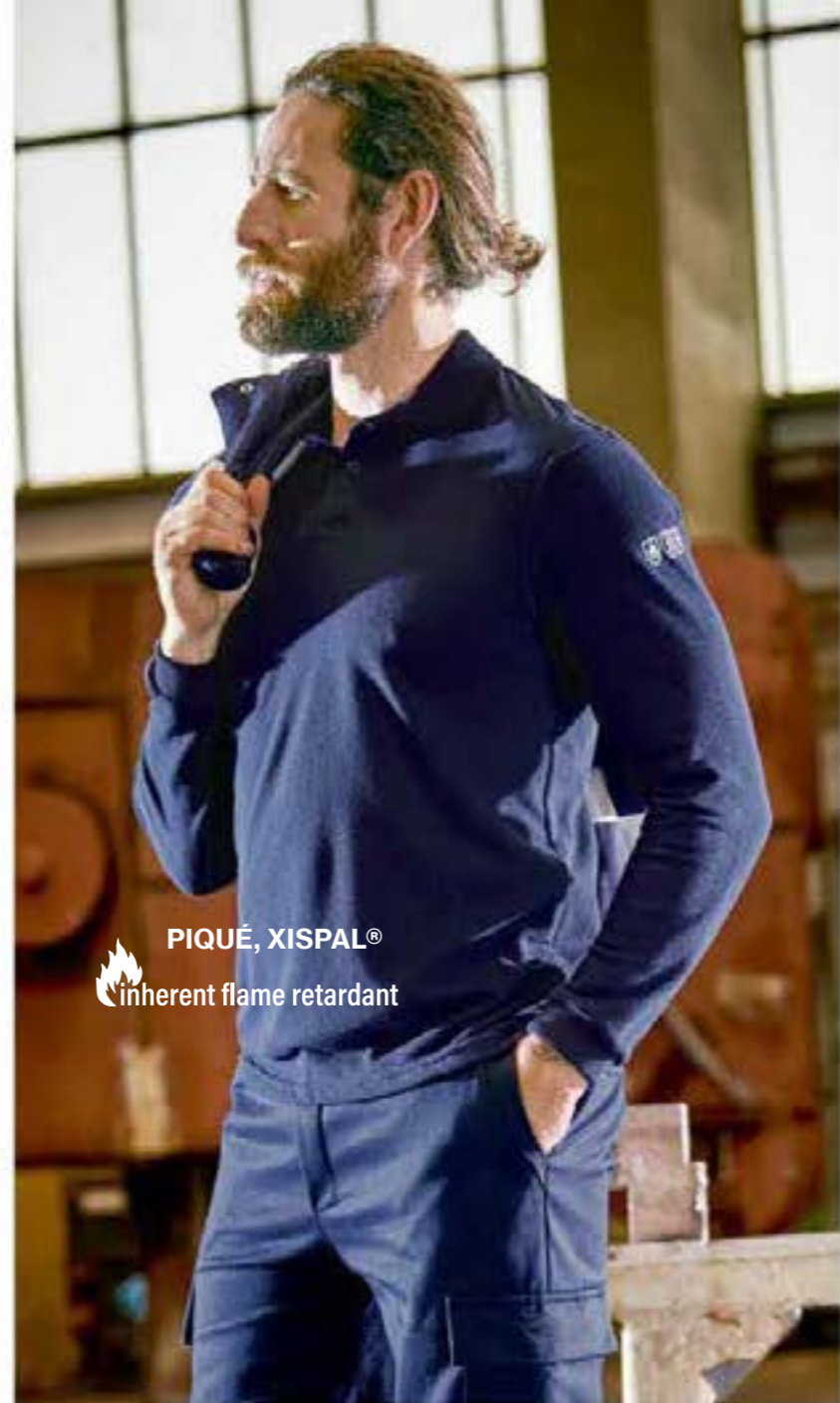
- + Polo collar with 2 buttons
- + Long sleeved with cuffs
- + Standard logos on sleeve

220 g/m²
MATERIAL:
 50% cotton
 39% modacrylic
 10% viscose
 1% antistatic

CARE:



Jacket + Polo shirt



ATPV of fabric:
11,4 cal/cm²



039
navy blue

MULTINORM SWEATSHIRT

ITEM LD826S

SIZES: S - 4XL

- + Crew neck
- + Long sleeved with cuffs
- + Standard logos on sleeve

260 g/m² XISPAL®

MATERIAL:
 50% cotton / 39% modacrylic
 10% viscose / 1% antistatic

CARE:



ATPV of fabric:
4,1 cal/cm²



039
navy blue

MULTINORM SWEATSHIRT

ITEM LD816S

SIZES: S - 4XL

- + Crew neck
- + Long sleeved
- + Standard logos on sleeve

160 g/m² **MATERIAL:**
 50% cotton / 39% modacrylic
 10% viscose / 1% antistatic

XISPAL®

CARE:



MULTINORM LONG JOHNS

ITEM LD816P

SIZES: S - 4XL

- + Elasticated waistband
- + Leg cuffs

BELT OUTDOOR FR

ITEM HE1100

SIZES: (Length in cm)
 120, 130, 140,
 150, 160

ITEM HE11538

SIZES: (Length in cm)
 090, 100, 110, 120, 130, 140, 150, 160

- + Flame retardant
- + Band 38 mm, permanently elastic and lightweight
- + Buckle made of polyamide 6.6
- + Length infinitely adjustable

MATERIAL:
 58% polyester
 23% modacrylic
 19% cotton

000
black



000
black

MULTINORM BALACLAVA

ITEM LD816B - 10 pieces

SIZE: 0

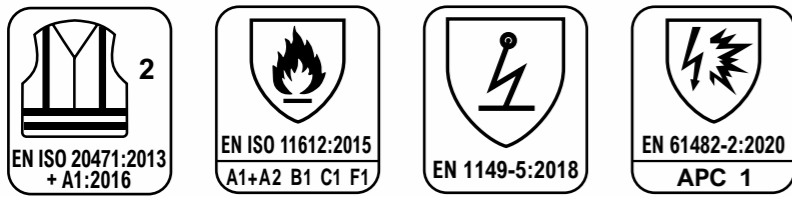
160 g/m² XISPAL®

MATERIAL:
 50% cotton
 39% modacrylic
 10% viscose
 1% antistatic

CARE:



SHIRTS



MULTINORM SHIRT

ITEM 4173R

ITEM 5173R

MEN'S
SIZES: 46 - 64

- + Shirt collar
- + Hidden snap fastener placket, Overlap: 5 cm
- + Long sleeved
- + Cuff with inside and outside hidden snap fastener + gusset
- + 2 chest pockets with flap and with snap fastener hidden to the outside
- + Torso and sleeves with 2 reflective stripes (5 cm / 1 inch wide)

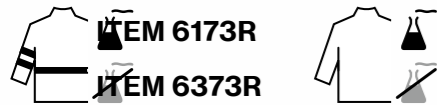


911
high-vis yellow
navy blue

all Shirts: inherent flame retardant



MULTINORM SHIRT



MEN'S
SIZES: 46 - 64

- + Shirt collar
- + Hidden snap fastener placket, Overlap: 5 cm
- + Long sleeved
- + Cuff with inside and outside hidden snap fastener + gusset
- + 2 chest pockets with flap and with snap fastener hidden to the outside
- + Torso and sleeves with 2 reflective stripes (5 cm / 1 inch wide)

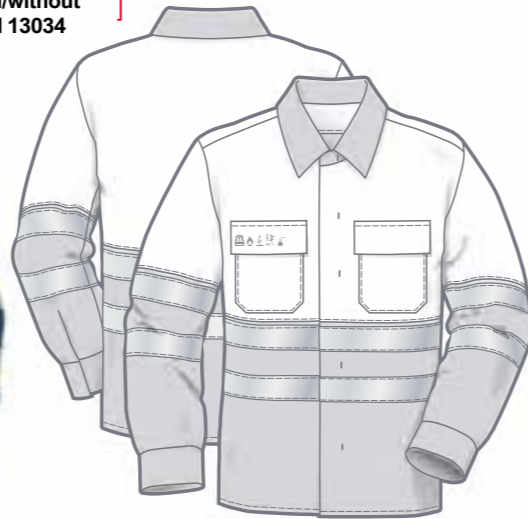
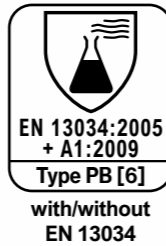


CARE:

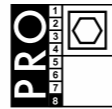


170 g/m²

MATERIAL:
30% modacrylic
30% viscose
20% cotton
19% polyamide
1% antistatic



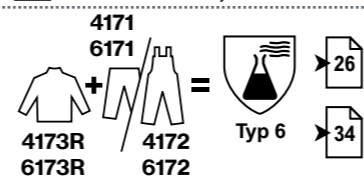
CARE:



Jacket + Shirt



Shirt +
Trousers /
Dungarees



170 g/m²

MATERIAL:
30% modacrylic / 30% viscose
20% cotton / 19% polyamide
1% antistatic



611
navy blue



SHIRT

ITEM 6107

MEN'S
SIZES: 46 - 64

- + Shirt collar
- + Hidden snap fastener placket
- + 1 chest pocket with flap and hidden snap fastener
- + Cuff with inside and outside hidden snap fastener + gusset

170 g/m²

MATERIAL:
30% modacrylic / 30% viscose
20% cotton / 19% polyamide
1% antistatic



498
grey

CARE:



SHIRT

ITEM 4227

COLLAR-
SIZES: 35/36 - 55/56

- + Shirt collar
- + Hidden snap fastener placket
- + 1 chest pocket
- + Cuff with inside and outside hidden snap fastener + gusset



159
blue

NOMEX®

185 g/m²

MATERIAL:
98% aramide / 2% carbon fibre
Nomex® Comfort

CARE:



LOGOS

K

20471

11611

11612

1149-5

61482-2

13034

343

HIGH VISIBILITY CLOTHING

For other standards please see page 106

DIN EN ISO 20471



This standard determines the requirements for high visibility clothing. Employees must be visible when working outside (for example in moving traffic) in all lighting conditions that may occur.

During daylight conditions this is ensured by the fluorescent background material and by the reflection of vehicle's headlights off the reflective material when it is dark.

BACKGROUND MATERIAL

ISO 20471 identifies three colours of background material: Fluorescent yellow, orange-red and red

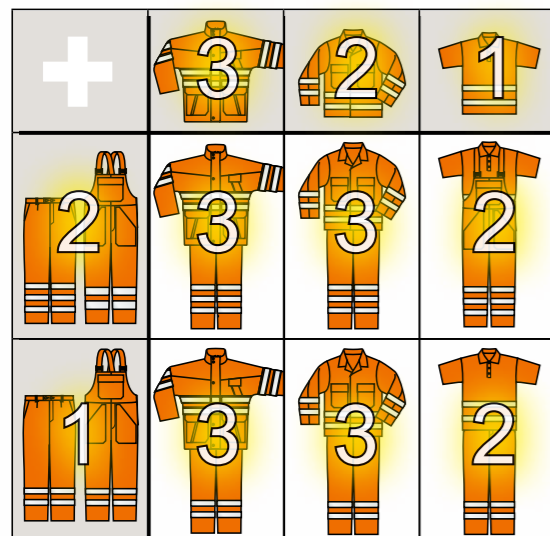
PROTECTIVE CLASSES

The clothing is divided into three different protective classes. Clothing in class 3 offers the highest level of protection.

The three classes have the following minimum areas for background material and reflective material:

Class 3	Class 2	Class 1
0,8 m ²	0,5 m ²	0,14 m ²
0,2 m ²	0,13 m ²	0,1 m ²

A certain protective class may be attained by a combination of individual pieces of clothing, provided the protective class does not require this to be met by one piece of clothing.



Example illustration

MATERIAL REQUIREMENTS

The requirements of the materials used regarding colour fastness to rubbing, perspiration fastness, fastness to washing, cleaning resistance and ironing fastness are also defined in the standard. All non-fluorescent materials must fulfil the colour fastness requirements:

ARRANGEMENT OF REFLEXIVE STRIPES (EXAMPLES):



TORSO: 2 waist reflective stripes + 2 shoulder reflective stripes*

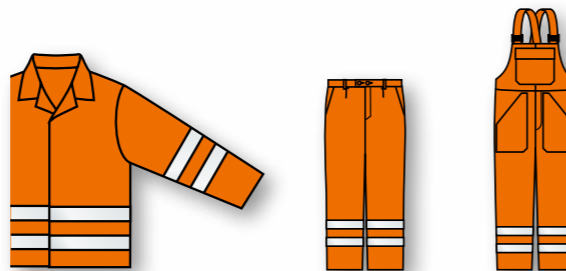
Or: 1 waist reflective stripe + 2 shoulder reflective stripes*

Or: 2 waist reflective stripes

* no gaps are permitted at the front and the back between the shoulder reflective stripes and the next waist reflective stripe

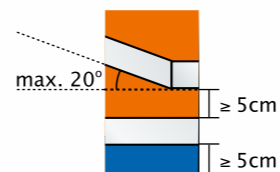
LONG SLEEVES AND TROUSERS LEGS:

At least 2 horizontal reflective stripes



REFLECTIVE STRIPES - DISTANCES AND ANGLES

- Minimum distance between reflective stripes: 5 cm
- Minimum distance from the hem: 5 cm
- Maximum angle of horizontal wraparound stripes: 20°



INFORMATION FOR EMPLOYEES

Jackets must be done up, the reflective parts of the trousers must not be obscured by boots.

SOILING, AGEING

In accordance with the Road Traffic Regulations if the warning effectiveness of the high visibility clothing is lost due to soiling, ageing or a decrease in brightness it may no longer be used. This must be checked after every wash before being used again.

HIGH VISIBILITY TWO-TONE



Back with stretch

Side pockets

Adjustable

Reflective stripes 7 cm

LOGOS

20471

11611

11612

1149-5

61482-2

13034

343

HIGH VISIBILITY TWO-TONE



Jacket + Trousers/Dungarees



430
high-vis orange
grey



929
high-vis orange
navy blue



427
high-vis orange
green



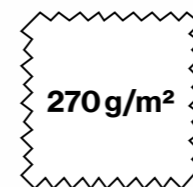
460
high-vis yellow
grey



911
high-vis yellow
navy blue



912
high-vis yellow
green



MATERIAL:

50% polyester / 50% cotton

TRIM:

65% polyester / 35% cotton
245 g/m²

CARE:



JACKET

ITEM 8704N

SIZES: 44/46 - 64/66
90/94 - 106/110

- + Stand-up collar
- + Front has zip and snap fasteners
- + 2 chest pockets with flap and snap fasteners
- + 2 side pockets
- + 1 inner phone pocket with velcro tab
- + Adjustable cuffs
- + Back stretch insert to assist with freedom of movement and ventilation
- + 2 reflective stripes on torso and sleeves, reflective stripe on shoulders (5 cm / 1 inch wide)
- + Back waistband with tabs and snap fasteners

LOGOS

L



20471



11611



11612



1149-5



61482-2



13034



343



430 high-vis orange grey
929 high-vis orange navy blue
427 high-vis orange green
460 high-vis yellow grey
912 high-vis yellow green



430 high-vis orange grey
929 high-vis orange navy blue
427 high-vis orange green
460 high-vis yellow grey
911 high-vis yellow navy blue



912 high-vis yellow green

TROUSERS

ITEM 8705N 777

SIZES: 42 - 66
 94 - 114
 23 - 32

- + 6 belt loops
- + Elasticated back waistband
- + Waistband with jeans button
- + 2 side pockets
- + 2 hip pockets, right with flap and hidden snap fasteners
- + 1 ruler pocket + attached pocket, divided
- + 1 cargo pocket (bellow pocket) with flap and snap fasteners + phone pocket (bellow pocket) with velcro tab
- + Zip fly
- + Knee reinforcement made from high strength polyester with opening for knee pads, with velcro
- + 2 reflective stripes on legs (7 cm / 2,75 inch wide)



911 high-vis yellow navy blue



MATERIAL:
 50% polyester / 50% cotton
TRIM:
 65% polyester / 35% cotton
 245 g/m²



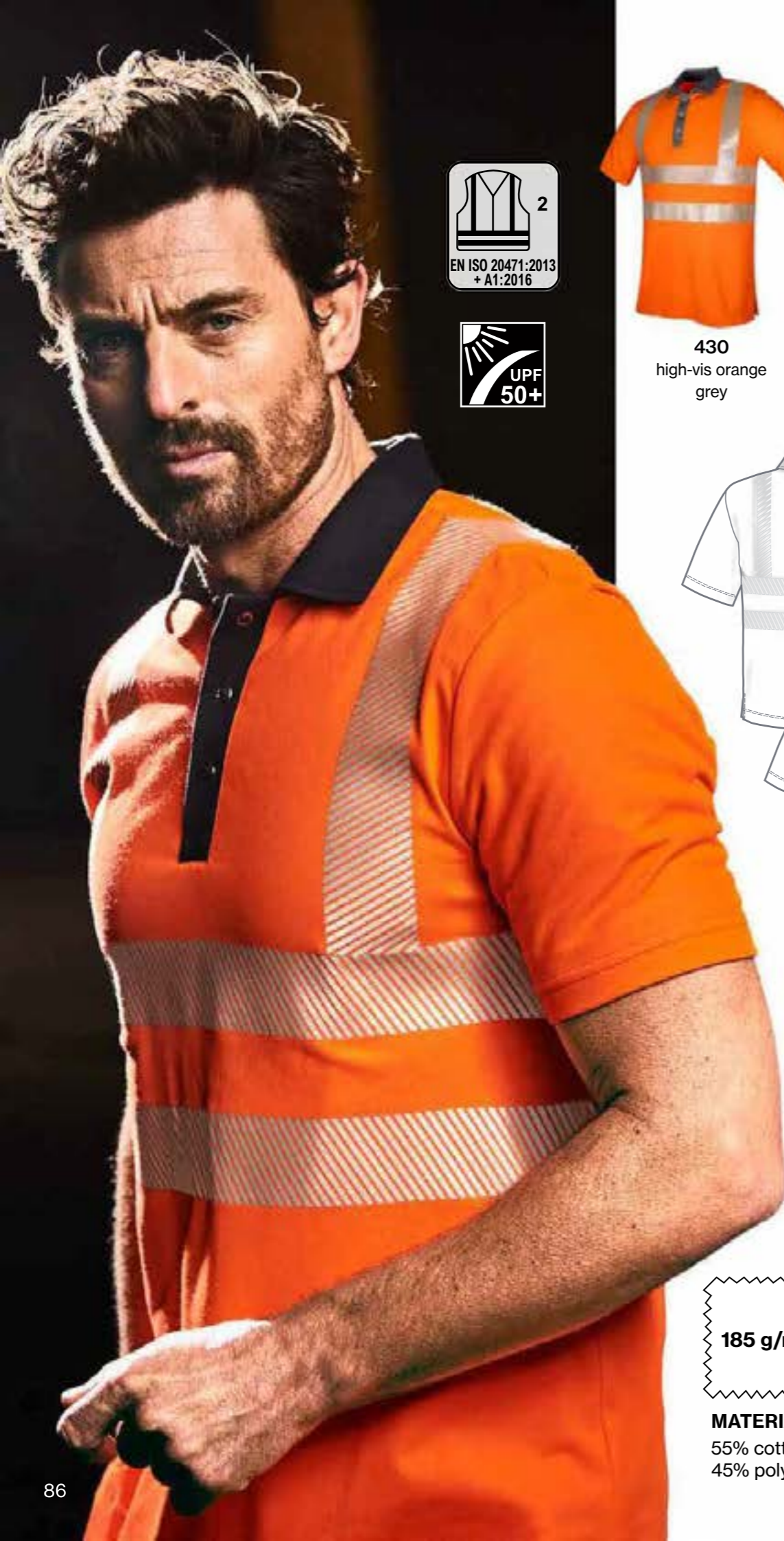
HIGH VISIBILITY TWO-TONE

DUNGAREES

ITEM 8706N 777

SIZES: 42 - 66
 94 - 114
 23 - 32

- + High bib back
- + Lateral stretch inserts
- + Adjustable elastic straps with front release buckles
- + Zip fly
- + 1 bib pocket with flap and snap fasteners + attached pocket with pen holder
- + 1 inner bib pocket with zip
- + 2 side pockets
- + 2 hip pockets, right with flap and hidden snap fasteners
- + 1 ruler pocket + attached pocket
- + 1 cargo pocket (bellow pocket) with flap and snap fasteners + phone pocket (bellow pocket) with velcro tab
- + Knee reinforcement made from high strength polyester with opening for knee pads, with velcro
- + 2 reflective stripes on legs (7 cm / 2,75 inch wide)



430
high-vis orange
grey



460
high-vis yellow
grey



POLOSHIRT

ITEM 8777

SIZES: XS - 3XL

- + UV protection 50+
- + Polo collar with snap fasteners
- + Short sleeved
- + Side slits

185 g/m²

MATERIAL:
55% cotton
45% polyester, piqué

CARE:



HIGH VISIBILITY



911
high-vis yellow
navy blue



VEST

two-tone

ITEM 8780

SIZES: XS - 4XL

- + Stand-up collar
- + Zip
- + 1 left chest pocket with flap and snap fasteners
- + 1 right chest pocket (bellow pocket) with velcro tab + pen compartment
- + 1 inner chest pocket with snap fastener
- + 2 side pockets
- + 2 reflective stripes on torso, reflective stripes on shoulders (5 cm / 2 inch wide)

240 g/m²
+
150 g/m²

MATERIAL:
70% polyester
30% cotton
QUILTED LINING:
100% polyester

CARE:



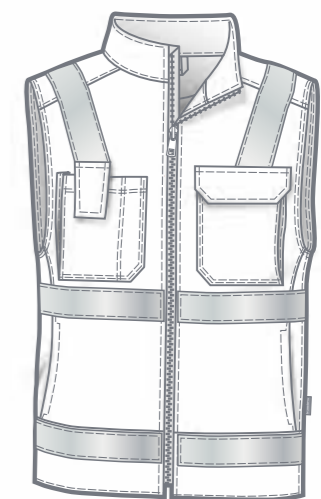
929
high-vis orange
navy blue



035
high-vis yellow



072
high-vis orange



VEST

unicoloured

ITEM 8779

SIZES: XS - 4XL

- + Stand-up collar
- + Zip
- + 1 left chest pocket with flap and snap fasteners
- + 1 right chest pocket (bellow pocket) with velcro tab + pen compartment
- + 1 inner chest pocket with snap fastener
- + 2 side pockets
- + 2 reflective stripes on torso, reflective stripes on shoulders (5 cm / 2 inch wide)

LOGOS

M

20471

11611

11612

1149-5

61482-2

13034

343



911
high-vis yellow
navy blue



929
high-vis orange
navy blue



035
high-vis yellow



072
high-vis orange

SOFTSHELL JACKET

two-tone

ITEM 8773

SIZES: XS - 4XL

- + Stand-up collar
- + Front zip
- + 1 chest pocket with zip
- + 2 side pockets with zip
- + Elasticated back of cuffs
- + 2 reflective stripes on torso and sleeves, 1 reflective stripe on shoulders

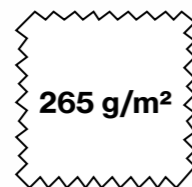
SOFTSHELL JACKET

unicoloured

ITEM 8772

SIZES: XS - 4XL

- + Stand-up collar
- + Front zip
- + 1 chest pocket with zip
- + 2 side pockets with zip
- + Elasticated back of cuffs
- + 2 reflective stripes on torso and sleeves, 1 reflective stripe on shoulders



MATERIAL:
100% polyester

CARE:



HIGH VISIBILITY SOFTSHELL JACKET

LOGOS

N



20471



11611



11612



1149-5



61482-2



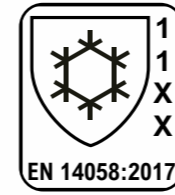
13034



343



HIGH VISIBILITY FLEECE JACKET



035
high-vis yellow



072
high-vis orange

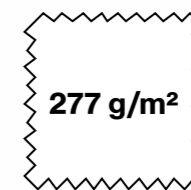


FLEECE JACKET

ITEM 8707

SIZES: XS (40/42) - 4XL (68/70)
S-L (90/94) - XL-L (114/118)

- + can be combined with weather jacket 8709 to add warmth
- + Stand-up collar
- + Front zip
- + 2 side pockets
- + 1 side inner pocket with zip
- + Longer back



MATERIAL:
100% polyester

CARE:    

HIGH VISIBILITY WEATHER JACKET



- + Zip with zipper pull tag
- + Rain gutter



- + Lined
- + Inner chest pocket with zip



- + Possibility to add a patch
- + Flap for attaching a fleece jacket as lining



LOGOS

20471

11612

11612

1149-5

61482-2

15034

343

WEATHER JACKET

ITEM 8709

SIZES: XS (40/42) - 4XL (68/70)
S-L (90/94) - XL-L (114/118)

- + 2 layer laminate
- + Lined, can be combined with the fleece jacket to add warmth
- + Stand-up collar with fold away hood, adjustable elastic cord in hood
- + Front placket with zip and snap fasteners + rain gutter
- + 2 chest pockets (bellow pockets) with flap and velcro
- + 2 side pockets with velcro flap
- + 1 inner chest pocket with zip
- + Adjustable sleeve cuffs with velcro tabs
- + Elasticated seam
- + 2 reflective stripes on torso and sleeves, 1 reflective stripe on shoulders



035
high-vis yellow



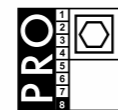
072
high-vis orange



MATERIAL:
100% polyester,
2 layer laminate

water column > 20.000 mm
Water vapour transmission resistance
R_{et} 4,2 m²Pa/W

CARE:



FLEECE JACKET

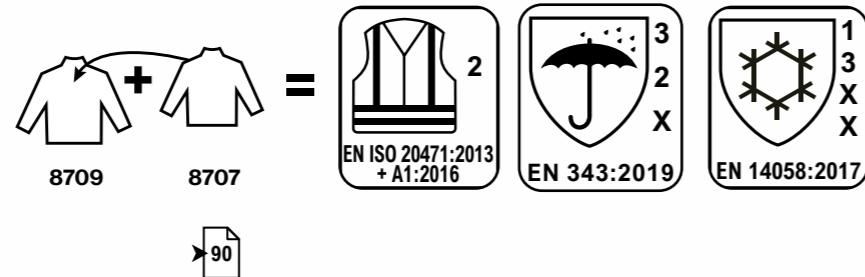
ITEM 8707

- + Can be combined with weather jacket to add warmth



035
high-vis yellow

072
high-vis orange



**HIGH VISIBILITY
WEATHER JACKET**

LOGO-SIZES + POSITIONS + TROUSERS SHORTENING

A ECOROVER WELDER

5 mm

③ ①

②

① e.g. 9 x 9 cm
② max. 100 cm², e.g. 20 x 5 cm
③ e.g. 11 x 3 cm

B ECOROVER SAFETY + SAFETY PLUS

5 mm

③ ① ②

① e.g. 9 x 9 cm
② max. 208 cm², e.g. 26 x 8 cm
③ e.g. 11 x 3 cm

C HIGH-VIS-MULTINORM + HIGH-MULTINORM - HEAVY

5 mm

③ ①

②

① max. 81 cm², e.g. 9 x 9 cm
② max. 208 cm², e.g. 26 x 8 cm
③ max. 33 cm², e.g. 11 x 3 cm

D HIGH-VIS-MULTINORM + HIGH-MULTINORM - LIGHT

5 mm

③ ①

②

① max. 81 cm², e.g. 9 x 9 cm
② max. 100 cm², e.g. 20 x 5 cm
③ max. 33 cm², e.g. 11 x 3 cm

E WEATHER HIGH-VIS-MULTINORM

① max. 60 cm², e.g. 12 x 5 cm
② max. 27,5 cm², e.g. 11 x 2,5 cm

F FOUNDRY + WELDER - HEAVY + LIGHT

5 mm

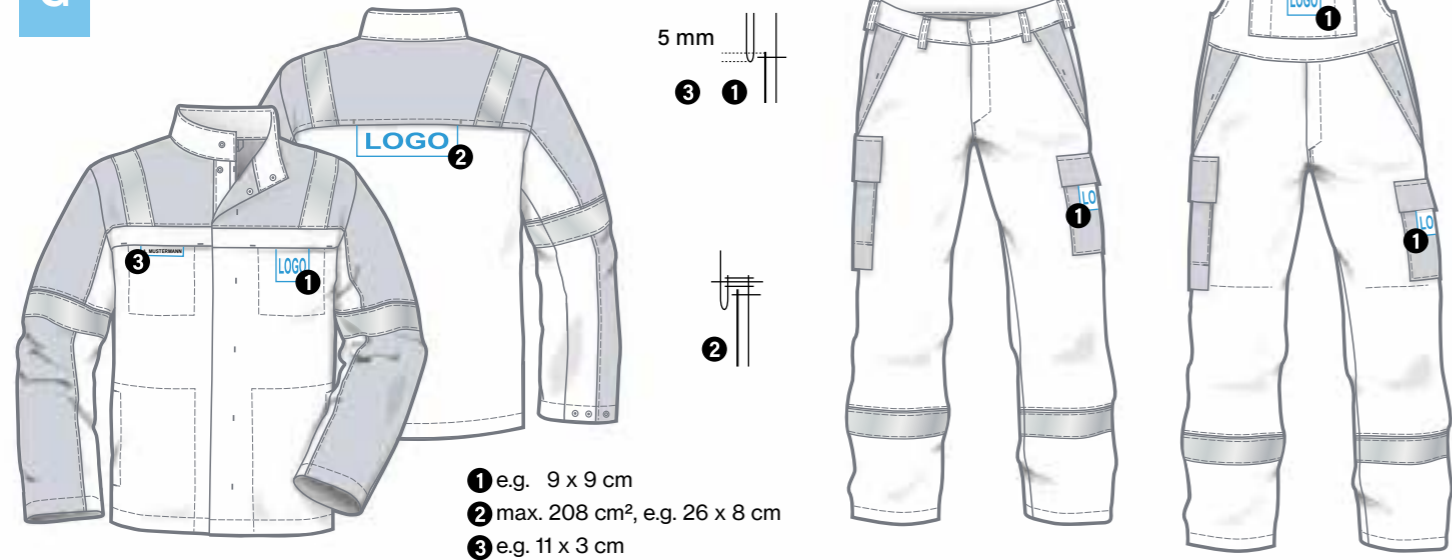
③ ①

②

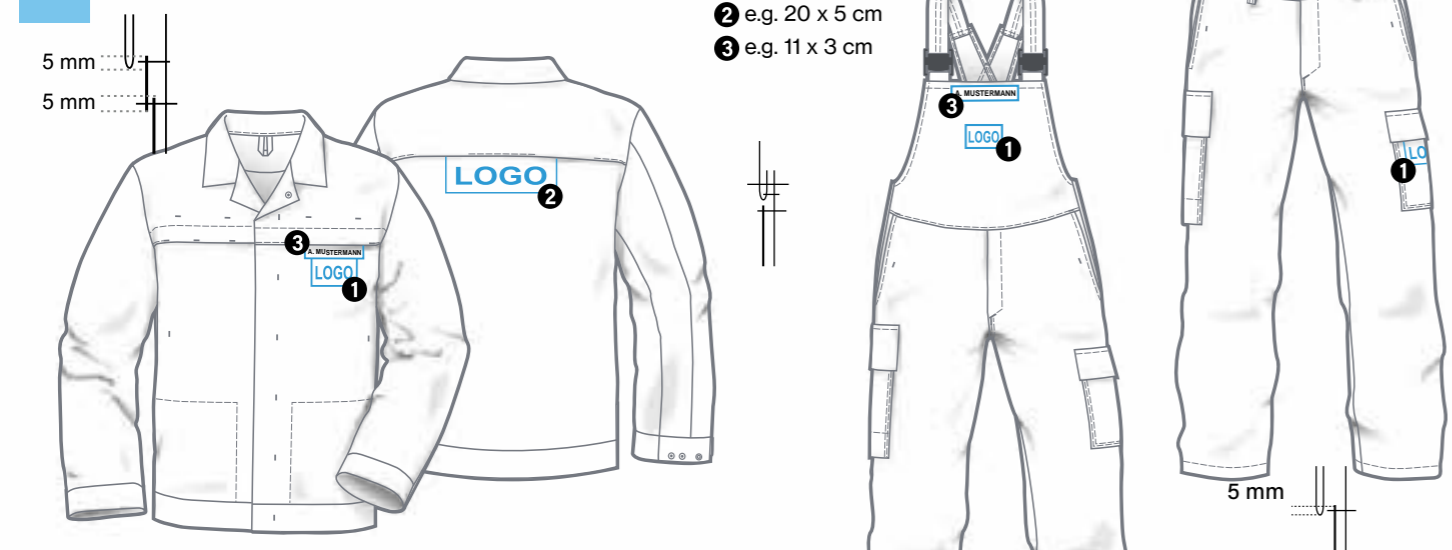
① e.g. 9 x 9 cm
② max. 100 cm², e.g. 20 x 5 cm
③ e.g. 11 x 2,5 cm

LOGO-SIZES + POSITIONS + TROUSERS SHORTENING

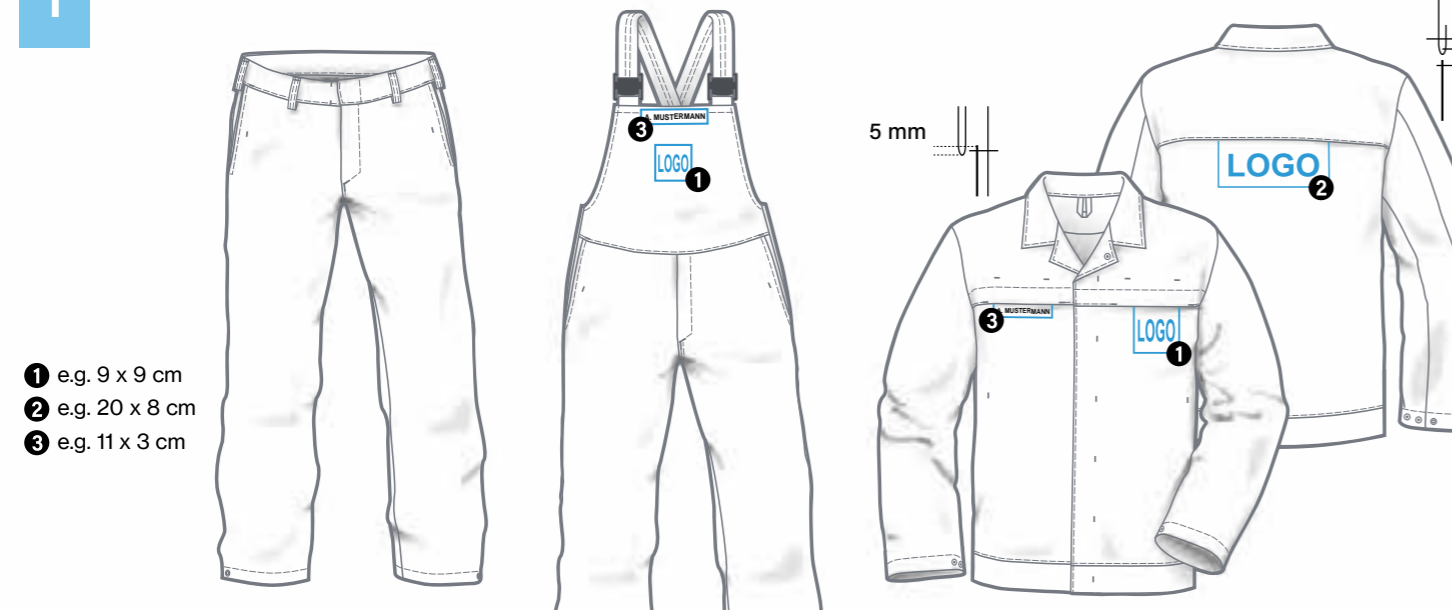
G MULTINORM 1-PLY + 2-PLY



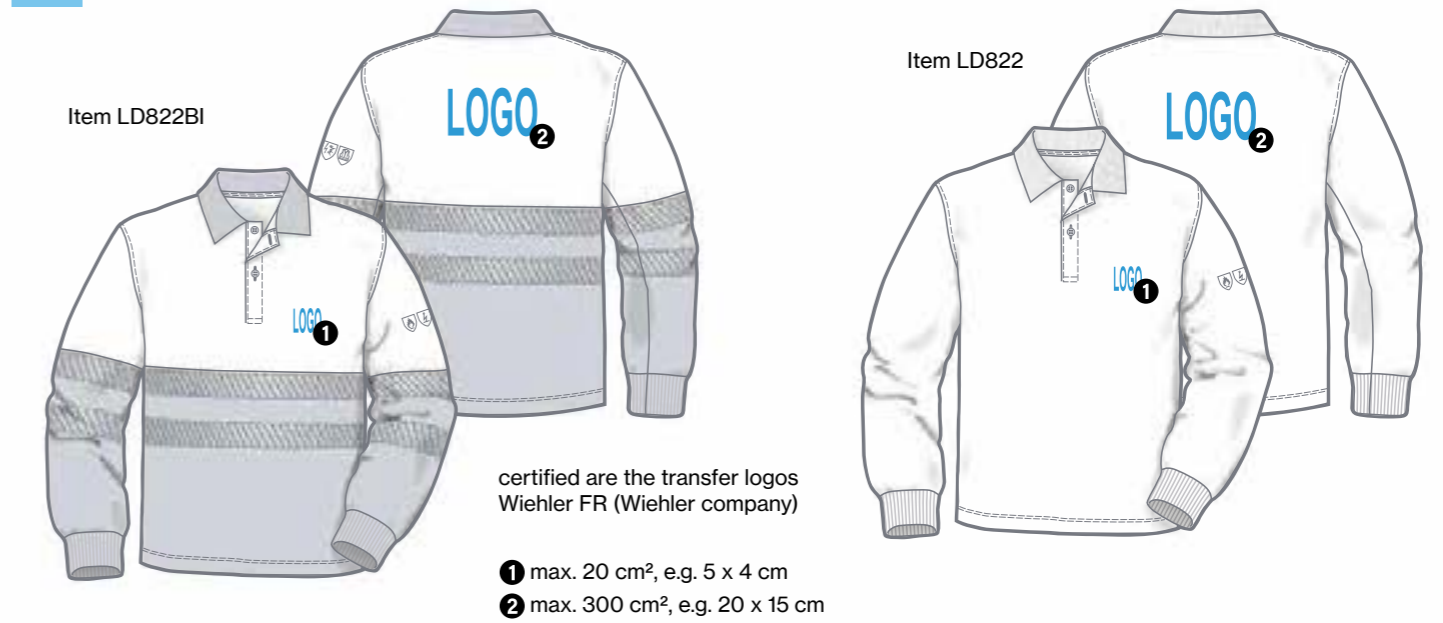
H WELDER CLASS 1



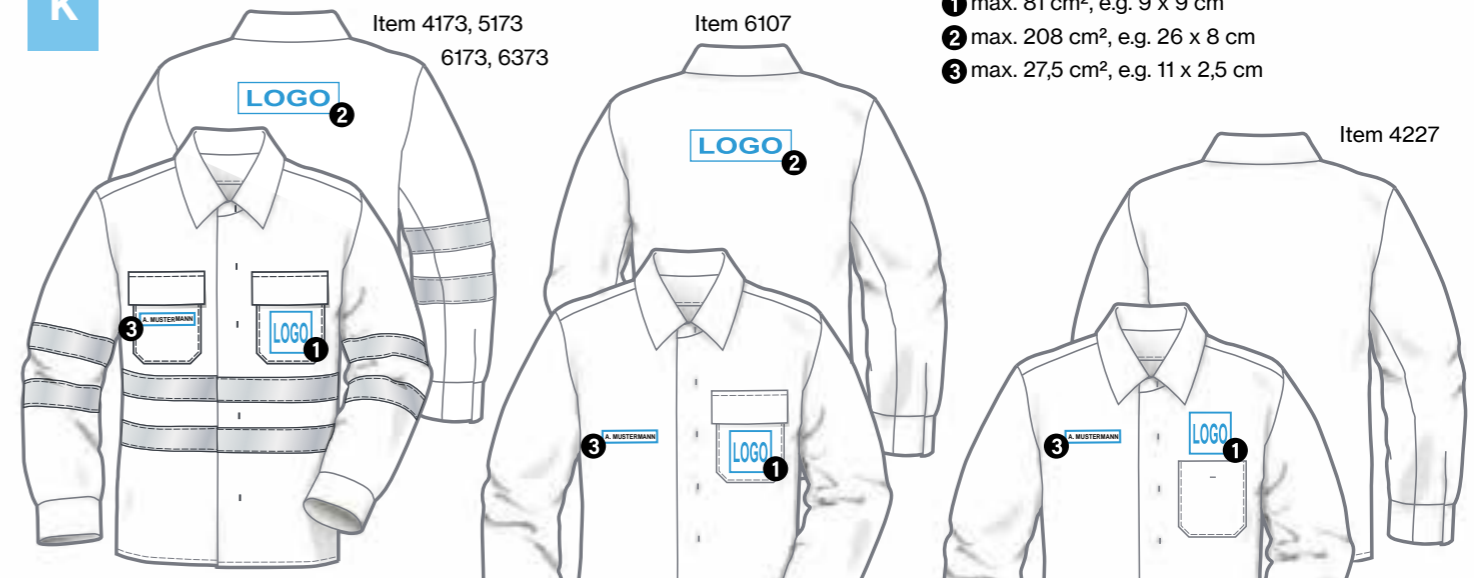
I WELDER CLASS 2



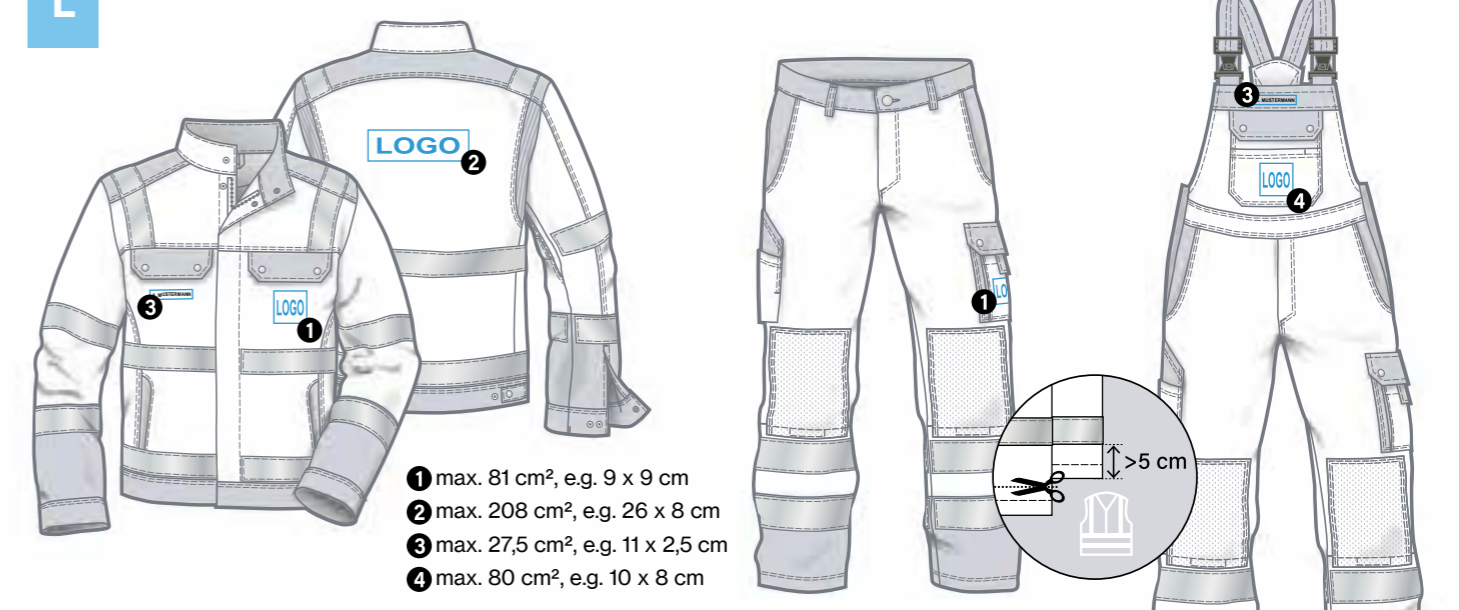
J MULTINORM POLO SHIRTS



K MULTINORM SHIRTS



L HIGH VISIBILITY TWO-TONE



LOGOS G-L

20471

1611

1612

1149-5

61482-2

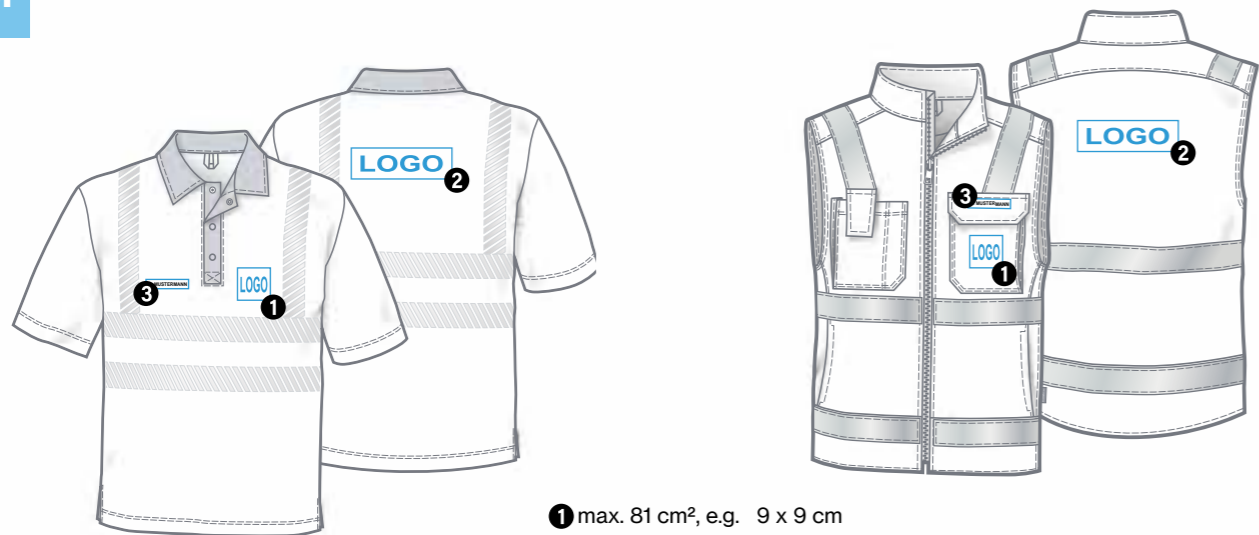
13034

343

LOGO-SIZES + POSITIONS

M

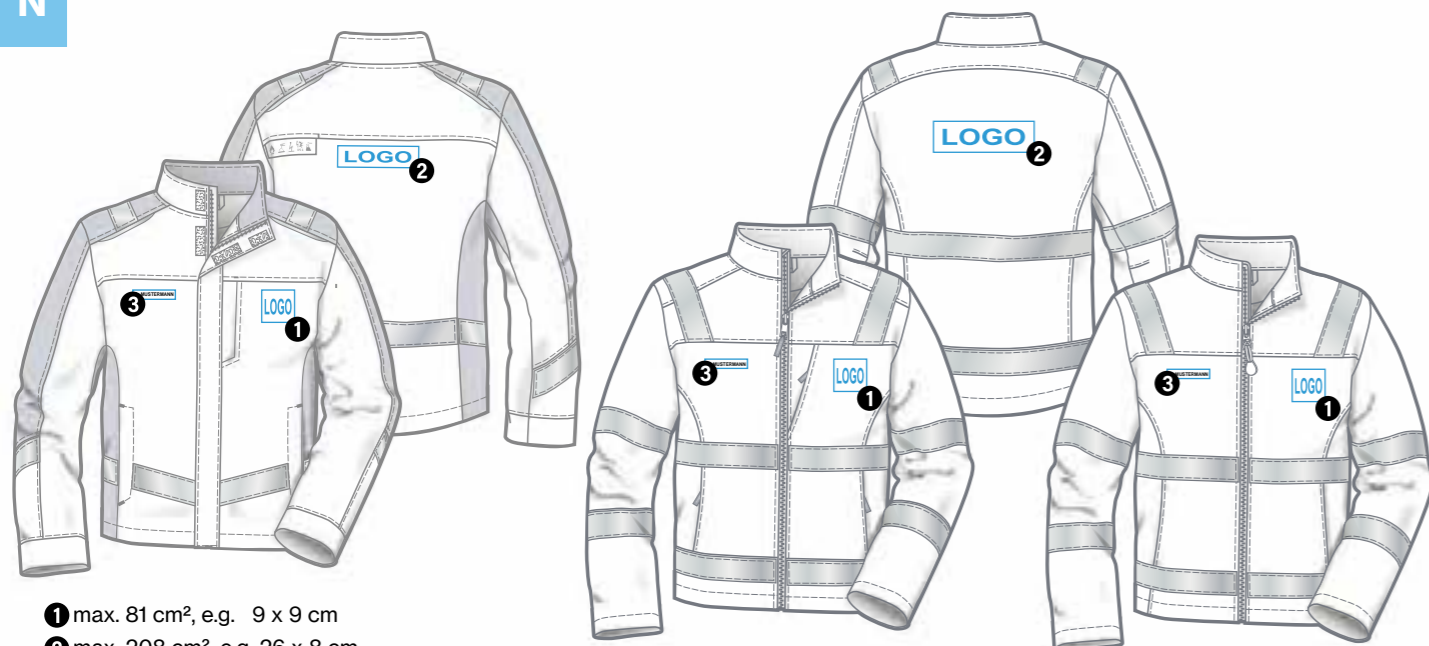
HIGH VISIBILITY POLO SHIRTS + VESTS



- 1 max. 81 cm², e.g. 9 x 9 cm
- 2 max. 208 cm², e.g. 26 x 8 cm
- 3 max. 27,5 cm², e.g. 11 x 2,5 cm

N

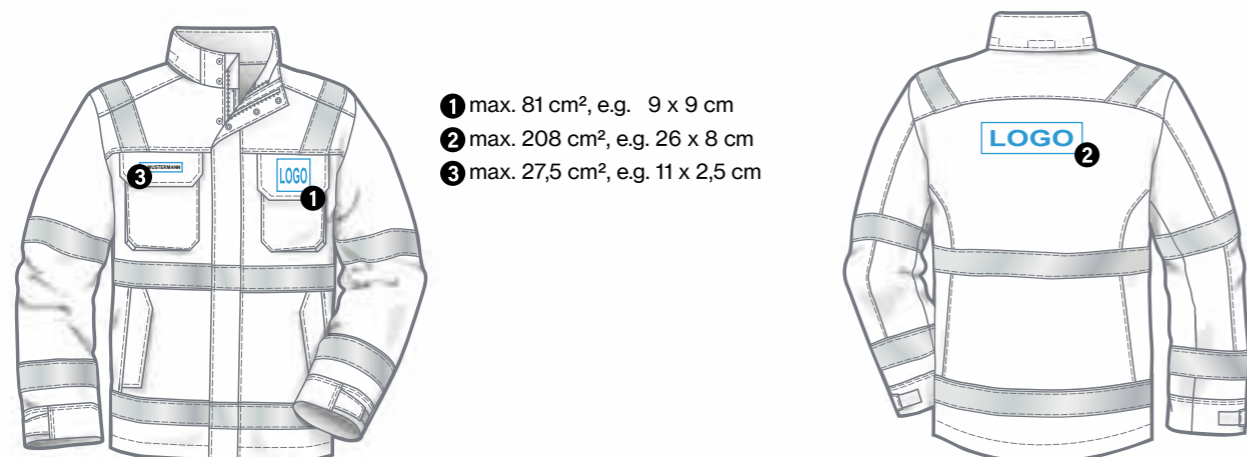
SOFTSHELL JACKETS + FLEECE JACKETS



- 1 max. 81 cm², e.g. 9 x 9 cm
- 2 max. 208 cm², e.g. 26 x 8 cm
- 3 max. 27,5 cm², e.g. 11 x 2,5 cm

O

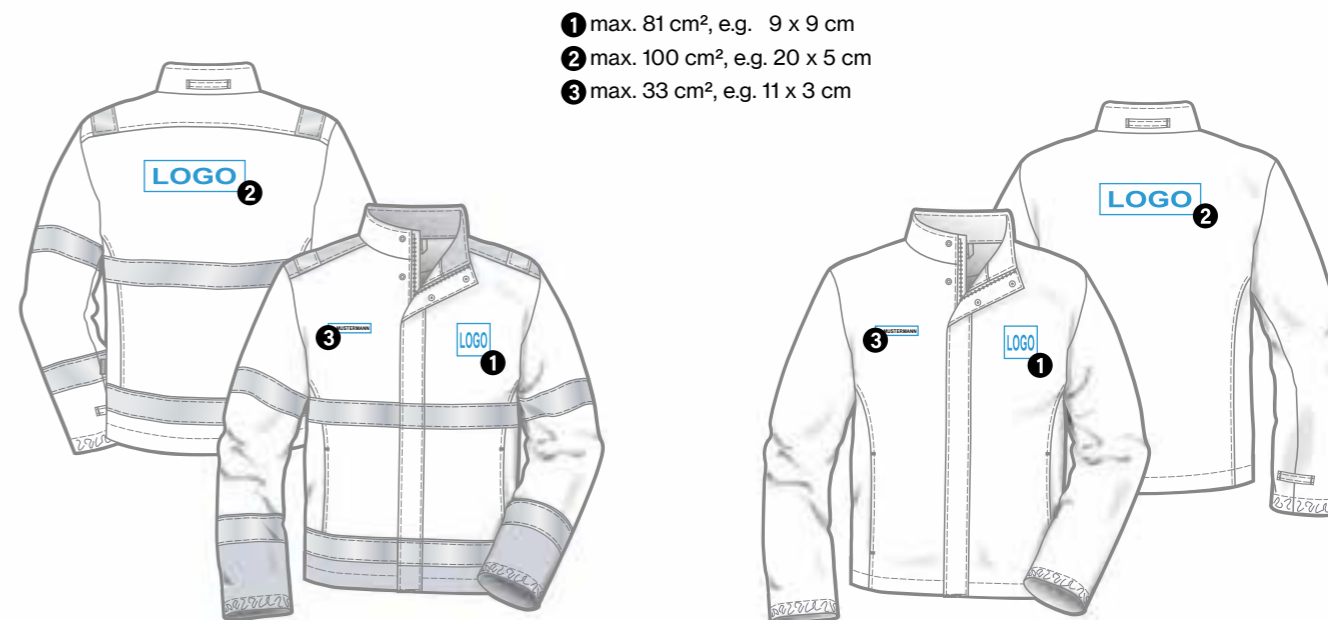
HIGH VISIBILITY WEATHER JACKETS



- 1 max. 81 cm², e.g. 9 x 9 cm
- 2 max. 208 cm², e.g. 26 x 8 cm
- 3 max. 27,5 cm², e.g. 11 x 2,5 cm

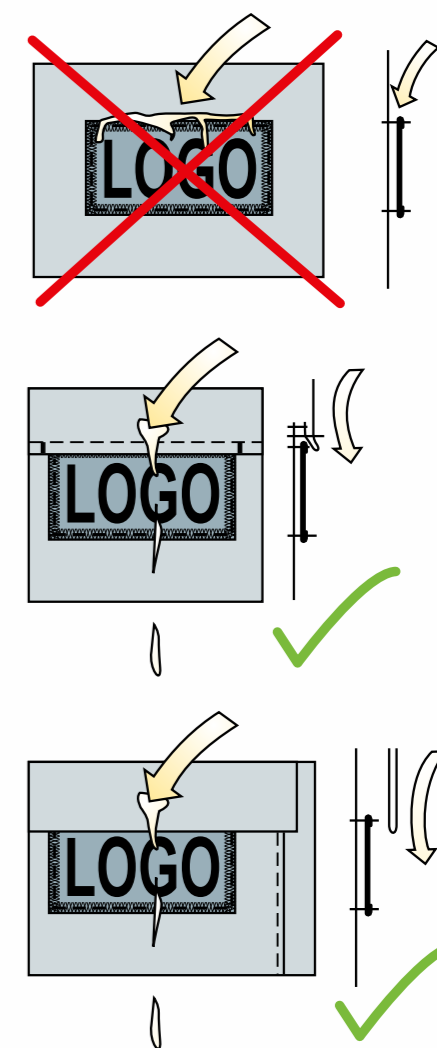
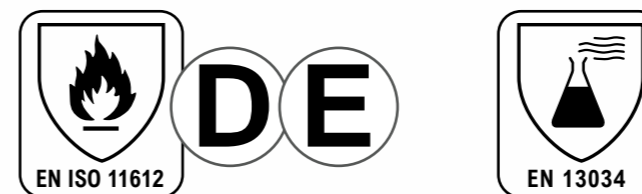
P

MULTINORM FLEECE JACKETS



- 1 max. 81 cm², e.g. 9 x 9 cm
- 2 max. 100 cm², e.g. 20 x 5 cm
- 3 max. 33 cm², e.g. 11 x 3 cm

Molten metals and chemicals:



The emblem must be attached tucked under the back panel/the pocket flap. Splashes of metal and chemicals are able to freely run off.

EMBROIDERY THREADS

also suitable for



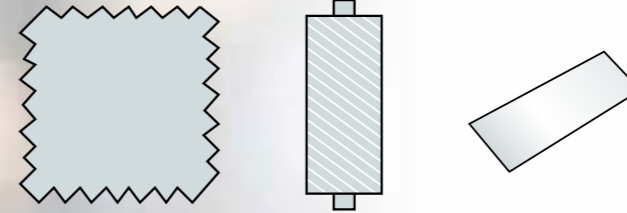
D On request
EN ISO 11612 - D
Molten aluminium

COLOURS:

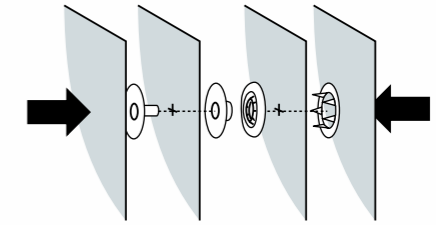
white 001	pale blue 079	light green 118
light grey 782	royal blue 159	medium green 453
medium grey 094	navy 039	green 105
grey 298	light blue 191	
black 000	orange 172	
yellow 573	red 587	
light cream 002	bordeaux 285	
light beige 336		
khaki 096		
brown 473		



REPAIR INSTRUCTIONS



Original fabric and materials (thread, reflective stripes etc.) must always be used for repairs.



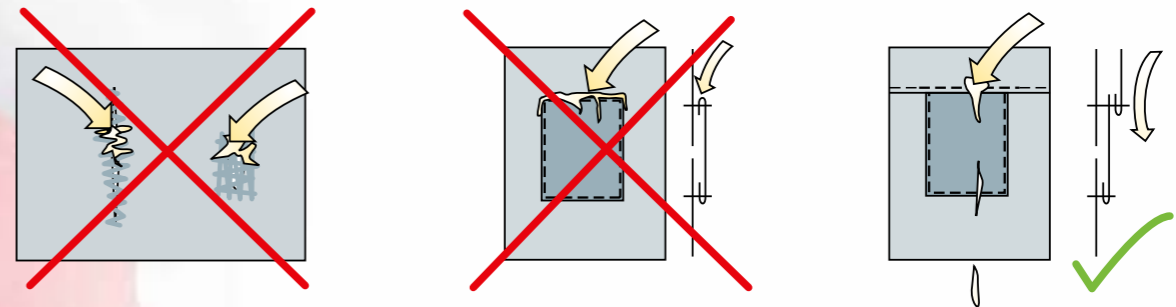
When repaired snap fasteners must be attached in the same place as the original (e.g. hidden outwards and on the inside as shown in this diagram)



DE

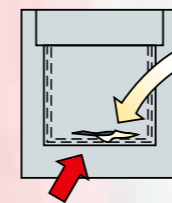
On request
EN ISO 11612 - D, E
Molten aluminium, iron

We recommend that tears and holes should not be plugged - patches must be made out of the original material and applied so that other material is overlapping

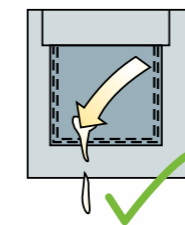


Example repairs

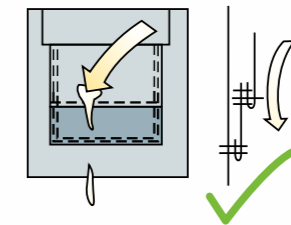
Pocket



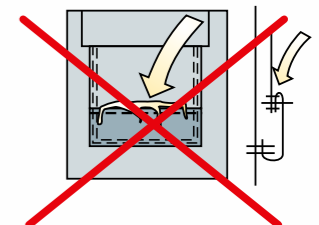
Pocket is damaged
It must be repaired



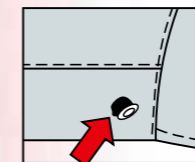
Pocket completely
resown



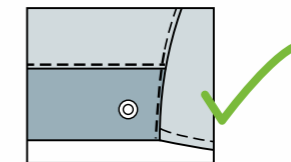
Pocket now with dividing seam, lower area new,
seam allowance must be stitched pointing upwards



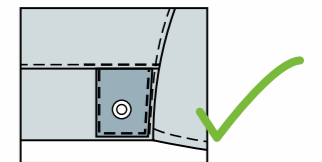
Sleeve cuffs



Snap fastener has torn out
It must be repaired



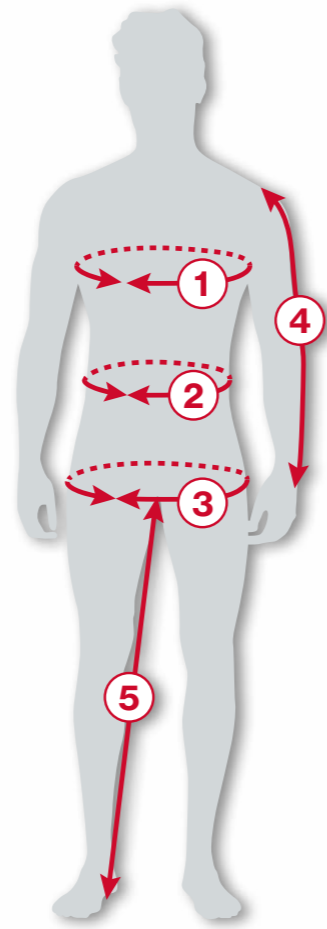
Section completely
resown



Section with trim
sown into the waist seam

LOGOS
20471
11611
11612
1149-5
61482-2
13034
343

MEASURES IN CM



MEN	Sizes															
	XS		S		M		L		XL		2XL		3XL		4XL	
	40	42	44	46	48	50	52	54	56	58	60	62	64	66	68	70
① Chest	80	84	88	92	96	100	104	108	112	116	120	124	128	132	136	140
② Waist	68	72	76	80	84	88	92	96	100	106	112	118	124	130	136	142
③ Hip	88	92	96	100	104	108	112	116	120	124	128	132	136	140	144	148
④ Sleeve length	59	61	62	63	64	65	66	67	68	69	70	71	72	73	74	75
⑤ Inside leg	72	74	76	77	78	79	80	81	82	83	84	84	84	84	84	84
LONG SIZES	XS-L		S-L		M-L		L-L		XL-L		Measurements ① - ③ the same as normal sizes					
④ Sleeve length	82	86	90	94	98	102	106	110	114	118						
⑤ Inside leg	76	78	80	81	82	83	84	85	86	87						
SHORT SIZES	XS-K		S-K		M-K		L-K		XL-K		2XL-K		3XL-K			
④ Sleeve length	20	21	22	23	24	25	26	27	28	29	30	31	32	33		
⑤ Inside leg	67	69	71	72	73	74	75	76	77	78	79	79	79	79		

Size conversion table																
MEN	XS		S		M		L		XL		2XL		3XL		4XL	
	40	42	44	46	48	50	52	54	56	58	60	62	64	66	68	70
LADIES	34	36	38	40	42	44	46	48	50	52	54	56	58			

SIZES + MEASURES



DIN EN ISO 11611



Protective clothing for use in welding and allied processes

The protective clothing is intended to protect the wearer against spatter (small splashes of molten metal), short contact time with flame and radiant heat from an electric arc. It minimizes the possibility of electrical shock by short-term, accidental contact with live electrical conductors at voltages up to approximately 100 V d. c. in normal conditions of welding.

This standard defines two classes with performance requirements. Class 1 is the lower class and Class 2 the higher class.

- **Class 1**
Offers protection against less hazardous welding techniques and workplace situations with less weld spatter and lower radiant heat.
- **Class 2**
Offers protection against more hazardous welding techniques and workplace situations with more weld spatter and greater radiant heat.

Performance requirements - clothing

- No electrically conductive connection possible between the inside and the outside of the clothing, such as metal fastenings.
- Protective jackets must be of sufficient length to overhang the top of the trousers by at least 20 cm in every posture and with every movement of the body.
- Fastenings may not allow any folds or pockets to form where splashes of metal could collect.
- External pockets must be able to be closed with a flap which must be a minimum of 20 mm wider than the pocket opening.
- Side pockets below the waist (without flaps) may only protrude a maximum of 10° from the side seam.
- Sleeve cuff fastenings and adjustments as well as the resulting folds must only be situated on the underside of the sleeve cuff.
- Trousers may not have any external folds or turn-ups.

All materials such as seams and applications (such as emblems) must fulfil the limited flame spread requirements pursuant to ISO 15025 Procedure A or Procedure B. Further requirements are resistance to splashes of molten metal, to thermal radiation as well as UV radiation in accordance with the respective protective class.

Protection is lost if the clothing is contaminated with highly flammable substances. An increased amount of oxygen in the air reduces the protection against catching fire.

The isolating effect of the clothing against electrical current as is reduced soon as it becomes affected by liquid, moisture or sweat.

Example areas of use

Machinery industry, shipyards, paper manufacturing, automotive industry, repair shops, workshops and utility companies.

DIN EN ISO 11612



Protective clothing - Clothing to protect against heat and flame

This standard specifies performance requirements for garments made from flexible materials, which are designed to protect the wearer's body from heat and/or flame. These garments have a wide range of application. The majority of hazards listed in this standard are classified into one of three performance levels depending on the type of hazard.

- Level 1 - exposure to a low risk
- Level 2 - exposure to a medium risk
- Level 3 - exposure to a high risk

Performance requirements:

The clothing must meet the requirements of limited flame spread and at least one other requirement.

Limited flame spread (Code letter A1 and/or A2)

The material must not suffer flaming to the top or either side edge. It must not suffer hole formation or produce flaming or molten debris. The maximum afterflame and afterglow time is 2 seconds.

Convective heat (Code letter B1 - B3)

The time it takes for the reverse side of the material to reach a temperature of 24°C is assessed (corresponding to second degree burns).

Radiant heat (Code letter C1 - C4)

The material is subjected to a heat flux density of 20 kW/m² and the time it takes for a second degree burn is assessed. Performance level C1: 7 - 20s to C4: > 95s

Splatters of molten aluminium (Code letter D1 - D3)

Splatters of molten iron (Code letter E1 - E3)

Depending on the respective class (e.g. D1: 100 - 200g or E1: 60 - 120g) the fabric is subjected to a certain amount of hot molten aluminium or iron. The underlying PVC film, which simulates skin, may not take any damage.

Contact heat (code letter F1 - F3)

The material is subjected to contact heat of at least 250 C°. At least performance level 1 must be achieved (e.g. F1: 5 - 10s).

Protective jackets must be of sufficient length to overhang the top of the trousers by at least 20 cm in every posture and with every movement of the body.

Garments that are designed to protect against the risk of exposure to molten metal splash by meeting the performance requirements designated by code letters **D** and **E** must have the following additional design features:

- Sleeves and trousers legs may not have turn-ups.
- External pockets must be able to be closed with a flap which must be a minimum of 20 mm wider than the pocket opening.
- Side pockets below the waist (without flaps) may only protrude a maximum of 10° from the side seam.
- Patch pockets must be made from materials meeting the same protection indices (A to F) and the same levels for these indices as the rest of the garment.
- Overlapping seams on the outside of the garment must be downward facing and secured in this position
- Sleeve cuff fastenings and adjustments as well as the resulting folds must only be situated on the underside of the sleeve cuff.
- Neck/collar openings shall be provided with closures.
- Side slits must be covered.

Protective clothing must be inspected regularly for blemishes and damage as this could impair the flame retardant effect or even neutralise its effect. Damaged protective clothing must be removed.

Affixing applications (such as badges) is only possible to a limited extent. All materials, in particular thread and fasteners, must meet the requirements of the same protection indices (A to F) and the same levels for these indices as the rest of the garment. This also applies, in particular, to embroidery thread. The upper seams of the applications must be covered or be located directly underneath the overlapping seams.

Example areas of use

Ironworks and smelting works, foundries, smithies, hammer mills, die-cutting units, the pyrotechnic industry and utility companies.

DIN EN 1149-T1-5



Electrostatic properties

This standard contains test methods and requirements for electrostatic conductive material to avoid flammable discharges.

Part 1 - Surface resistivity

Test method for fabrics with metal fibres or threads. The surface resistance in Ω is determined. Minimum requirements: see part 5.

Part 2 - Vertical resistance

Test method for measurement of the electrical resistance through a material.

Part 3 - Charge decay

This test method is applicable to all materials, including fabrics, which cannot be tested after the first procedure (e.g. fabrics with carbon fibres) The half life of the charge decay t_{50} in seconds and the shielding factor S are determined ($S=1-E_R/E_{max}$; measured field strength with the sample: E_R without the fabric: E_{max}). Minimum requirements: see part 5.

Part 5 - Material performance and design requirements

- Material requirements - tested in accordance with **EN 1149-1**: The specific surface reactivity must be less than or equal to $2.5 \times 10^9 \Omega$.
- Material requirements - tested in accordance with **EN 1149-3**: $t_{50} < 4s$ or $S > 0.2$ (half life charge decay $< 4s$ and shielding factor > 0.2)
- If the material has conductive threads in a striped or grid pattern the distance between the conductive threads must not be greater than 10 mm in one direction.

Design requirements

- Electrostatic dissipative protective clothing must always cover the body, arms and legs including the clothing worn underneath it. It is important that the wearer is earthed (such as by wearing conductive shoes).

Thin, non-dissipative additional elements such as labels/emblems, reflective stripes etc. are permitted provided that they are permanently attached so that they do not become completely or partially detached from the electrostatic dissipative protective clothing.

- Conductive components (zips, buttons etc.) are permitted, provided that they are completely covered by the dissipative outer material when the protective clothing is worn.

Example areas of use:

Utility companies (gas area), gasworks, pyrotechnics industry, emergency services.

EN 61482-2



Protective clothing against the thermal hazards of an electric arc

An electric arc is a luminous electrical discharge in the event of a short circuit. It usually does not last longer than one second and can give rise to temperatures over 10,000°C. In addition to convective heat and molten metal splashes, a great deal of radioactive heat is generated, which is invisible to the human eye and can result in serious second and third degree burns. The shock wave that occurs has a great deal of mechanical destructive force, which can cause walls to collapse.

Performance requirements:

- Arc flash tested materials and items of clothing must be permanently flame retardant, isolate the wearer from the heat and may not melt. (With the exception of small holes which may not be greater than 5 mm in diameter.)
- It may not continue to burn for more than 5 seconds after the incident.
- The front section of the body and the arms must be at least double-layered.
- Design elements such as hoods in which energy could get caught are not permitted.
- Undergarments made from inflammable material are recommended.

It is important to regularly clean the garments so that the flame retardant properties are not affected by contaminants. Oil and water repellent finishes are therefore recommended, which must be regularly reapplied during maintenance and cleaning cycles.

There are two arc protection classes:

Class 1: Arc duration 0.5s, short circuit current 4 kA

Class 2: Arc duration 0.5s, short circuit current 7 kA

Example areas of use:

Chemical and petrochemical industries, oil refineries, steel industry, utility companies, gasworks and electrical plants.

DIN EN 13034



Protective clothing against liquid chemicals

Performance requirements for chemical protective clothing offering limited protective performance against liquid chemicals (type 6).

Material requirements:

- Abrasion resistance: Abrasive paper test - downward force of 9 kPa: Classes 1-6: >10 - >2000 cycles.
- Tear resistance (trapezoid procedure): Classes 1-5: >10N - >150N
- Tensile strength: Classes 1-6: >30N - > 1000N
- Puncture resistance: Classes 1-6: >5N - >50N
- Liquid repellency: A jet of liquid chemicals over 10s (sulphuric acid, sodium hydroxide, o-Xylene, Butan-1-ol). Class 3 must be achieved for at least one chemical (repellency index of >95%).
- Resistance to penetration by liquid chemicals: Penetration test (EN 368). Class 2 must be achieved for at least one of the chemicals listed above (penetration index of <5%).
- Suit spray test/mist test: A test subject carries out 7 different movement sequences (e.g. climbing a ladder) whilst being lightly sprayed. This is repeated 3 times.

Clothing requirements:

- The seams must be executed so that they prevent the penetration of liquids through stitching holes or other components of the seam.
- Good freedom of movement/comfort with optimal protection.
- No unprotected external components such as pockets where liquid chemicals could collect are permitted (only pockets with flaps).

Example areas of use:

Chemical industry, petroleum industry, laboratories, transport companies, galvanizing plants and decontamination facilities.

DIN EN ISO 20471



See High visibility section:

Page 80

online:

→ Catalogues



→ Instagram



teamdress®
high performance workwear

teamdress Stein
Deutschland GmbH
Brandstücken 27
22549 HAMBURG
GERMANY

Tel.: +49 40 800905-01
E-Mail: info@teamdress.de
Web: www.teamdress.de

de berkel®
finest professional clothing

De Berkel B.V.
Gesinkkampstraat 13
7051 HR VARSSEVELD
NETHERLANDS

Tel.: +31 315 244161
E-Mail: info@deberkel.nl
Web: www.deberkel.nl