

deberkel®

finest professional clothing



OUR RECIPE FOR YOUR
EVERYDAY WORK: HYGIENE
AND DURABILITY.

HACCP-compliant clothing for the food industry

DIN 10524

Clothing manufactured specifically for wearing at the workplace and whose required characteristics are determined by its use, the activity at the workplace and the requirements of storage for reuse.

Provides guidance on the manufacture, selection, use and reprocessing of workwear in food establishments, taking into account the specific requirements of the workplace. The aim is to avoid adverse effects on foodstuffs that can be caused by inappropriate work clothing, and to provide assistance in selecting suitable work clothing.

The protective function of the work clothing must correspond to the respective food hygiene risk and the type of activity. If different activities are to be carried out by one person in one shift, the choice of clothing must meet the higher requirements in each case. The shelf life or degree of perishability of a foodstuff or ingredient cannot be stated in general terms, as this property depends on a number of intrinsic factors (such as aw and pH values).

The specific hygiene risk relevant for workwear must be decided depending on the type of food and the activity. The classification into risk classes provides assistance here.

For the risk classes RK2 and RK3, a corresponding combination of jacket, waistband jacket, work coat, tunic or slip-on shirt with dungarees, waistband trousers, ladies' trousers or slip-on trousers is to be provided.

Special note on execution

The user is responsible for selecting and using his work clothing depending on the respective activity as well as the conditions at the workplace and the products and processes. Especially in hygienically sensitive areas, both the colour of the workwear and its design features, such as a flexibly stretchable sleeve end, must be taken into account.

Risk classes

The protective function of the work clothing must correspond to the respective food hygiene risk and the type of activity.

Risk class RK1

Low hygiene risk

In the case of a low hygiene risk (handling of non-perishable or packaged foodstuffs), the protective function of the work clothing against the foodstuff may be low if it is adequately protected by the packaging.

Risk class RK2

High hygiene risk

If there is a high hygiene risk (handling of unpacked perishable foodstuffs), the protective function must be high. This group also includes activities in which food is processed technologically/manually and in the course of these measures the original germ flora is deliberately influenced (e.g. by heating, salting, chemical preservation or drying).

Risk class RK3

Highest hygiene risk

In the case of the highest hygiene risk (handling of unpacked, ready-to-eat, highly perishable foodstuffs), a very high level of protection must be ensured, since the foodstuffs are not technologically stabilised and micro-organisms, including pathogens, can multiply if necessary.

Please observe the valid standards and possible risk classes of the products. These are shown in the catalogue on the corresponding pages.



OEKO-TEX® STANDARD 100

- + Compliance with legal requirements for textile-relevant chemicals
- + Annual re-evaluation and further development of defined limit values and criteria
- + Globally uniform and scientifically based test criteria

Learn more at www.oeko-tex.com/standard-100

+ teamdress is a member of



CONTENTS

4	ITEM OVERVIEW	23	SHIRTS
7	EMBLEM ATTACHMENT	24	ADDITIONAL ITEMS
9	TUNICS	29	THERMAL CLOTHING
10	JACKETS	32	MULTINORM
12	COATS	35	MEAT HANDLER
16	TROUSERS	38	SIZES + MEASURES
20	DUNGAREES		
22	COVERALLS		

ITEM OVERVIEW

9 LADIES' TUNIC

 7604-001, 7604-094, 7604-698, 7604-079, 7604-159

10 UNISEX JACKET

 7600-001, 7600-094, 7600-001-079, 7600-111-001

10 UNISEX JACKET

 7600-111-001

11 UNISEX JACKET

 7600-555-001, 7600-555-094, 7600-555-698, 7600-555-159

12 UNISEX COAT

 7607-001, 7607-094, 7607-698, 7607-079, 7607-159

12 UNISEX COAT

 7607-111-001

13 COAT HOODED

 7608-001

13 COAT HOODED

 7608-111-001

16 UNISEX SLIP-ON TROUSERS

 7606-001, 7606-094, 7606-079

16 UNISEX SLIP-ON TROUSERS

 7606-111-001

17 UNISEX SLIP-ON TROUSERS

 7606-555-001, 7606-555-094

ADDITIONAL ITEMS

24 LADIES' TUNIC
LADIES' COAT


 1726-001, 1729-001

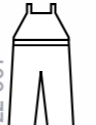
25 JACKET

 1725-001, 1725-159

25 COAT

 1730-001

26 TROUSERS

 1721-001, 1721100-001, 1721200-001, 1721100-094, 1722100-001, 1722200-001

27 DUNGAREES

 1722-001, 1722100-001, 1722200-001

20 UNISEX DUNGAREES
18 TROUSERS

 7602-001, 1001-001, 7602-094, 7601-094, 7601001-079

20 UNISEX DUNGAREES
18 TROUSERS

 1001-001, 7602-111-001, 7601-111-001

21 UNISEX DUNGAREES
19 TROUSERS

 7602-555-001, 100-555-001, 7601-555-094, 7601-555-094, 7602-555-698, 7601-555-698, 7602-555-159, 7601-555-159

17 LADIES' TROUSERS

 7605-555-001

22 UNISEX COVERALL

 7603-001

22 UNISEX COVERALL

 7609-111-001

23 UNISEX POLO SHIRT

 1738-001, 100-698

23 UNISEX SHIRT

 1724-001

29 THERMAL VEST
29 THERMAL JACKET

 8121-001, 8121-159, 8120-001, 8120-159

29 THERMAL DUNGAREES

 8122-001, 8122-159

ITEM OVERVIEW

32 MULTINORM JACKET

33 MULTINORM DUNGAREES

33 TROUSERS

33 MULTINORM DUNGAREES

33 TROUSERS

35 MEAT HANDLER COAT

hooded

35 MEAT HANDLER JACKET

36 MEAT HANDLER JACKET

36 MEN'S JACKET

37 BIB APRON

6150 222-346

6150 222-842

7150 222-346

7150 222-842

6152 222-346

6152 222-842

7152 222-346

7152 222-842

6151 000-346

6151 000-842

7151 000-346

7151 000-842

6152 444-346

6152 444-842

7152 444-346

7152 444-842

6151 777-346

6151 777-842

7151 777-346

7151 777-842

1882 000-131

1883-131

231-000 0981

100-111-5881

100-2001

EMBLEM ATTACHMENT

All articles certified according to DIN 10524: Page **9** ... **16** ... **23** to **29** can be embroidered with emblems, direct embroidery and names

EMBROIDER FABRIC: A fabric certified for the collection
 EMBROIDER YARNS: Isacord from Amann or Polyneon from Madeira

Examples:

For MULTINORM clothing, please refer to the instructions for emblem application on page **31**

For MEAT HANDLER clothing + bib aprons **35** to **37** there are no specifications for emblem application

TUNICS
 JACKETS
 COATS
 TROUSERS
 DUNGAREES
 COVERALLS
 SHIRTS
 THERMAL
 MULTINORM MEAT HANDLER

6

7

CLOTHING ACCORDING TO DIN 10524



DIN 10524:2020-06

RK1

RK2

RK3

215 g/m²



7604-094
light grey



7604-698
dark grey



7604-079
light blue



7604-159
blue

LADIES' TUNIC

with inner pockets
ITEM 7604

SIZES: 34 - 58

- + Lapel collar
- + Hidden snap fastener placket
- + 2 inner side pockets
- + Adjustable cuffs with snap fasteners



7604-001
white

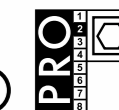


MATERIAL:
65% polyester
35% cotton

CARE coloured:



CARE white:



DIN 10524:2020-06

RK1

RK2

RK3

250 g/m²



7600-001
white



7600-094
light grey



7600001-079
light blue



UNISEX JACKET

adjustable cuffs
with inner pockets

ITEM 7600 & 7600001

with ribbed cuffs
with inner pockets

ITEM 7600111

SIZES: XS - 3XL
S-L - XL-L (length + 4 cm)

- + Lapel/turn down collar
- + Hidden snap fastener placket
- + 2 inner side pockets with snap fastener



7600111-001
white

215 g/m²

DIN 10524:2020-06

RK1

RK2

RK3

250 g/m²



7600555-001
white



7600555-094
light grey



7600555-698
dark grey



7600555-159
blue



UNISEX JACKET

adjustable cuffs
with outside pockets

ITEM 7600555

SIZES: XS - 3XL
S-L - XL-L (length + 4 cm)

- + Lapel/turn down collar
- + Hidden snap fastener placket
- + 2 chest pockets with flap and hidden snap fasteners, left with pen compartment
- + 1 inner side pocket with snap fastener

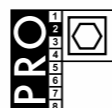


MATERIAL:
65% polyester
35% cotton

CARE coloured & knitted cuffs:



CARE white:



MATERIAL:
65% polyester
35% cotton

CARE coloured:



CARE white:



DIN 10524:2020-06

RK1

RK2

RK3

215 g/m²



7607-001
white



7607-094
light grey



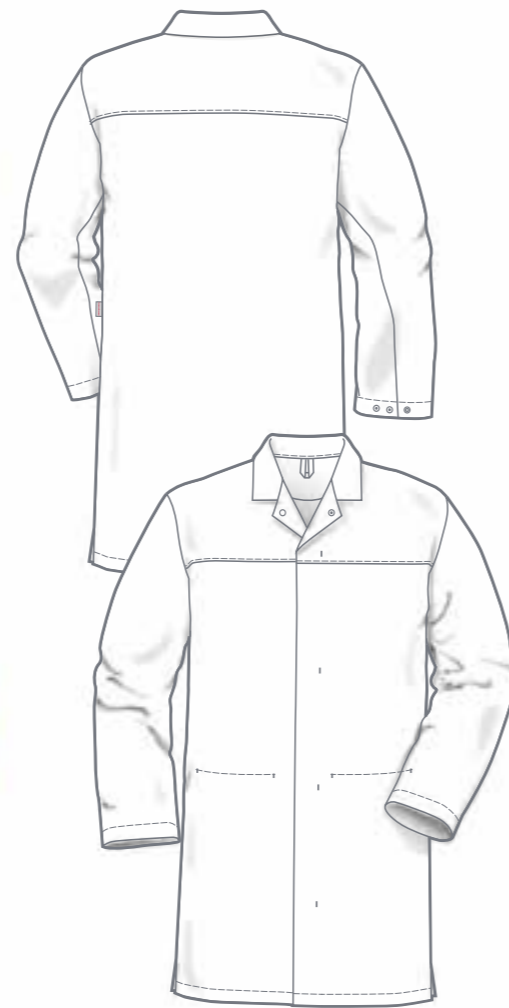
7607-698
dark grey



7607-079
light blue



7607-159
blue



UNISEX COAT

adjustable cuffs
with inner pockets
ITEM 7607

with ribbed cuffs
with inner pockets
ITEM 7607 111

SIZES: XS - 3XL
S-L - XL-L (length +7 cm)

- + Lapel collar
- + Hidden snap fastener placket
- + 1 inner chest pocket with snap fastener and pen compartment
- + 2 inner side pockets with snap fastener
- + Side slits



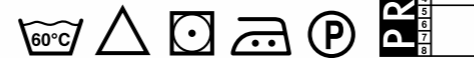
7607111-001
white

MATERIAL:
65% polyester
35% cotton

CARE coloured & knitted cuffs:



CARE white:



DIN 10524:2020-06

RK1

RK2

RK3

250 g/m²



7608-001
white



7608111-001
white

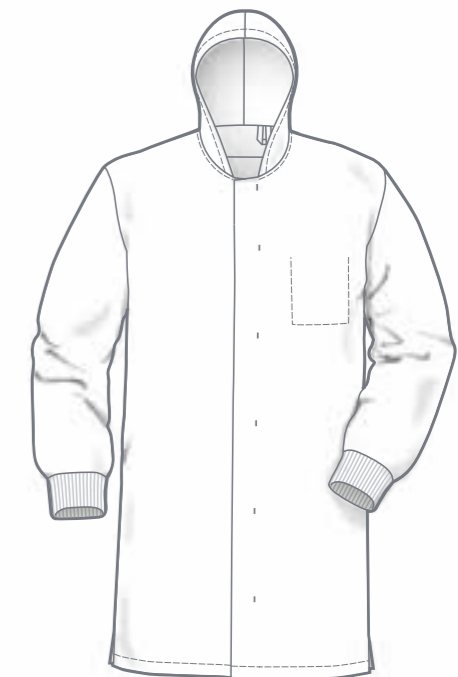
MEN'S COAT WITH HOOD

adjustable cuffs
with inner chest pocket
ITEM 7608

with ribbed cuffs
with inner chest pocket
ITEM 7608 111

SIZES: 44 - 66

- + Hidden snap fastener placket
- + Side slits



MATERIAL:
65% polyester
35% cotton

CARE knitted cuffs:



CARE white:





DIN 10524:2020-06

RK1

RK2

RK3

215 g/m²



7606-001
white



7606-094
light grey



7606-079
light blue



DIN 10524:2020-06

RK1

RK2

RK3

215 g/m²

UNISEX SLIP-ON TROUSERS

with cargo pockets

ITEM 7606555

SIZES: XS - 3XL
S-L - XL-L (length + 4 cm)
S-K - 2XL-K (length - 5 cm)

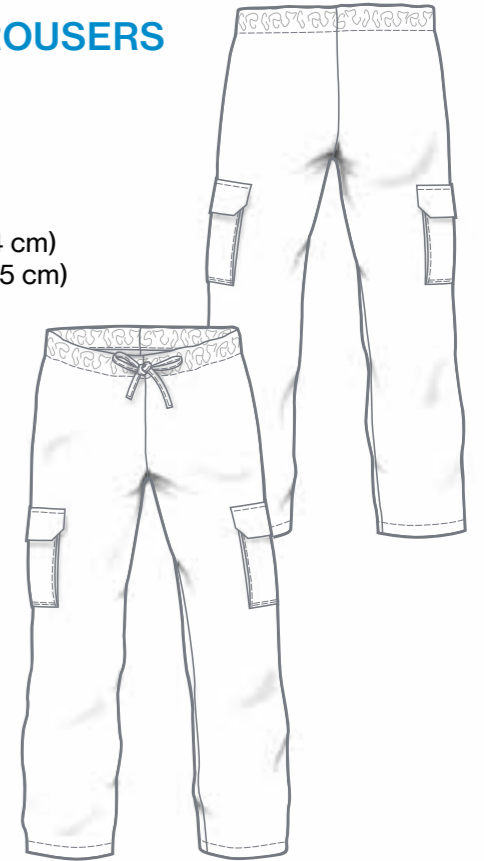
- + Elasticated waist with drawcord
- + Inner side tabs
- + 2 cargo pockets with flap and hidden snap fastener



7606555-001
white



7606555-094
light grey



7606111-001
white

UNISEX SLIP-ON TROUSERS

without pockets

ITEM 7606

with ribbed cuffs,
without pockets

ITEM 7606 111

SIZES: XS - 3XL
S-L - XL-L (length + 4 cm)
S-K - 2XL-K (length - 5 cm)

- + Elasticated waist with drawcord
- + Inner side tabs



RK1

RK2

RK3

250 g/m²

LADIES' TROUSERS

with outside pockets

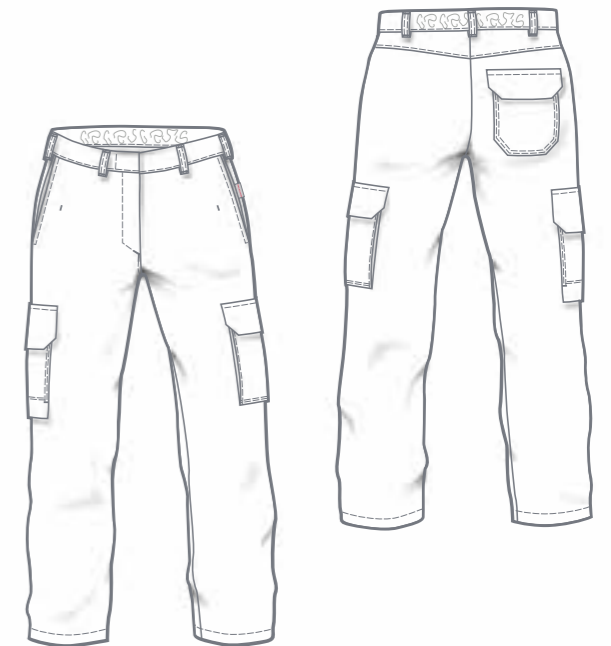
ITEM 7605555

SIZES: 34 - 58

- + 7 belt loops
- + Waistband fastener with hidden jeans button
- + Elasticated adjustable back waistband
- + Fly with metal zip
- + 2 side pockets with hidden snap fastener
- + 1 hip pocket with flap and hidden snap fasteners
- + 1 cargo pocket with flap and hidden snap fastener
- + 1 reinforced ruler pouch with flap and hidden snap fastener



7605555-001
white



MATERIAL:
65% polyester
35% cotton

CARE coloured & knitted cuffs:



CARE white:

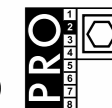


MATERIAL:
65% polyester
35% cotton

CARE coloured:



CARE white:



DIN 10524:2020-06

RK1

RK2

RK3

250 g/m²

215 g/m²

DIN 10524:2020-06

RK1

RK2

RK3

250 g/m²



7601-001
white



7601-094
light grey



7601001-079
light blue



7601555-001
white



7601555-094
light grey



7601555-698
dark grey



7601555-159
blue

UNISEX TROUSERS

only side pockets
ITEM 7601 & 7601001

with ribbed cuffs
only side pockets
ITEM 7601 111

SIZES: XS - 3XL
S-L - XL-L (length + 4 cm)
S-K - 2XL-K (length - 5 cm)

- + 7 belt loops
- + Waistband fastener with hidden jeans button
- + Elasticated adjustable back waistband
- + 2 side pockets with hidden snap fastener
- + Fly with metal zip



7601111-001
white



UNISEX TROUSERS

with outside pockets
ITEM 7601555

SIZES: XS - 3XL
S-L - XL-L (length + 4 cm)
S-K - 2XL-K (length - 5 cm)

- + 7 belt loops
- + Waistband fastener with hidden jeans button
- + Elasticated adjustable back waistband
- + Fly with metal zip
- + 2 side pockets with hidden snap fastener
- + 1 hip pocket with flap and hidden snap fasteners
- + 1 cargo pocket with flap and hidden snap fastener
- + 1 reinforced ruler pouch with flap and hidden snap fastener

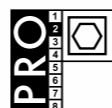


MATERIAL:
65% polyester
35% cotton

CARE coloured & knitted cuffs:



CARE white:



MATERIAL:
65% polyester
35% cotton

CARE coloured:



CARE white:



DIN 10524:2020-06

RK1

RK2

RK3

250 g/m²



7602-001
white



7602-094
light grey



DIN 10524:2020-06

RK1

RK2

RK3

250 g/m²



7602555-001
white



7602555-094
light grey



7602555-698
dark grey



7602555-159
blue



7602111-001
white



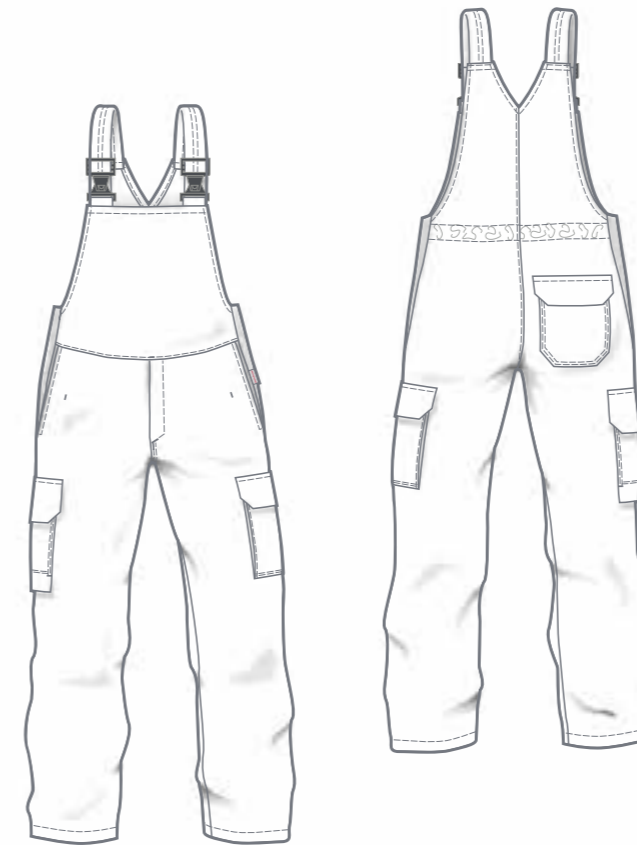
UNISEX DUNGAREES

only side pockets
ITEM 7602

with ribbed cuffs,
only side pockets
ITEM 7602 111

SIZES: XS - 3XL
S-L - XL-L (length + 4 cm)
S-K - 2XL-K (length - 5 cm)

- + Adjustable elastic straps
- + High bib back
- + 1 inner bib pocket with snap fastener
- + Side elasticated
- + Elasticated adjustable back waistband
- + 2 side pockets with hidden snap fastener
- + Fly with metal zip



UNISEX DUNGAREES

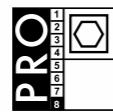
with outside pockets
ITEM 7602555

SIZES: XS - 3XL
S-L - XL-L (length + 4 cm)
S-K - 2XL-K (length - 5 cm)

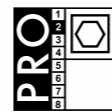
- + Adjustable elastic straps
- + High bib back
- + 1 inner bib pocket with snap fastener
- + Side elasticated
- + Elasticated adjustable back waistband
- + 2 side pockets with hidden snap fastener
- + 1 hip pocket with flap and hidden snap fasteners
- + 1 cargo pocket with flap and hidden snap fastener
- + 1 reinforced ruler pouch with flap and hidden snap fastener
- + Fly with metal zip

MATERIAL:
65% polyester
35% cotton

CARE coloured & knitted cuffs:

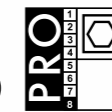


CARE white:

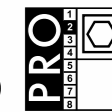


MATERIAL:
65% polyester
35% cotton

CARE coloured:



CARE white:



DIN 10524:2020-06

RK1

RK2

RK3

250 g/m²



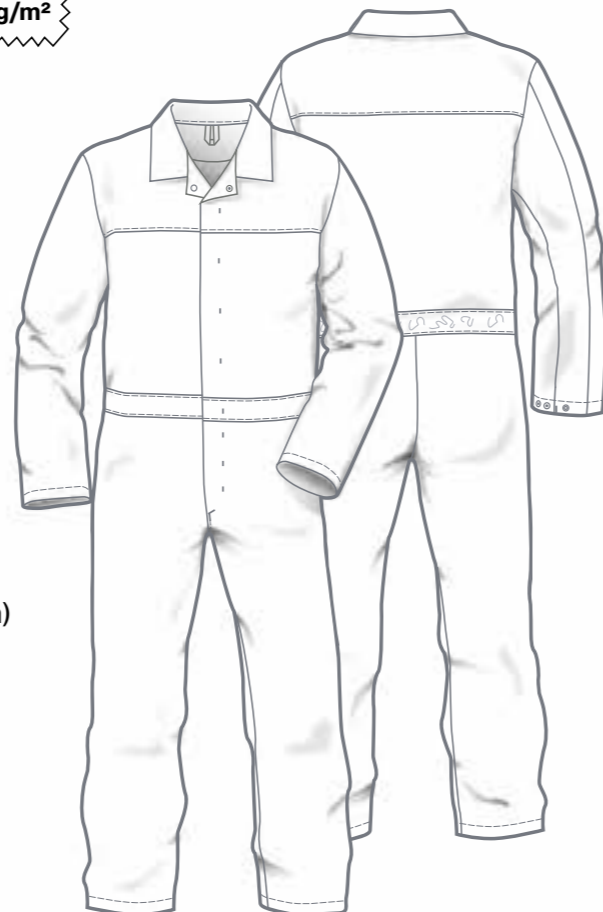
7603-001
white

UNISEX COVERALL

with inner pockets
ITEM 7603

SIZES: XS - 3XL
S-L - XL-L (length + 4 cm)
S-K - 2XL-K (length - 5 cm)

- + Lapel/turn down collar
- + Hidden snap fastener placket
- + 2 inner chest pockets with snap fastener
- + Adjustable cuffs with snap fasteners
- + Elasticated adjustable back waistband



DIN 10524:2012

RK1

RK2

RK3

185 g/m²



1738-001
white

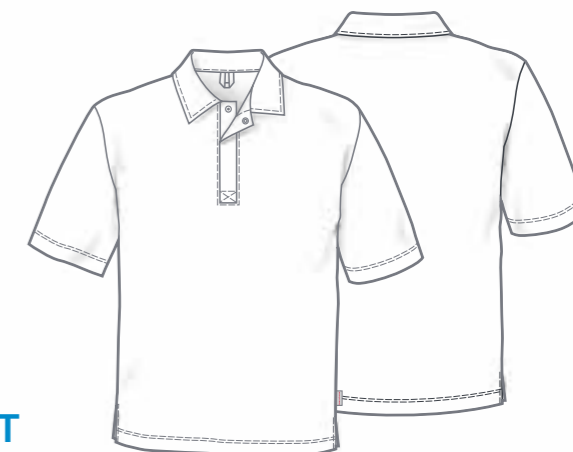
UNISEX POLO SHIRT

short sleeved
ITEM 1738

long sleeved
ITEM 1739

SIZES: XS - 3XL

- + Polo collar with hidden snap fasteners
- + Side slits



1739-001
white

MATERIAL: piqué
55% cotton
45% polyester

CARE:



DIN 10524:2020-06

RK1

215 g/m²



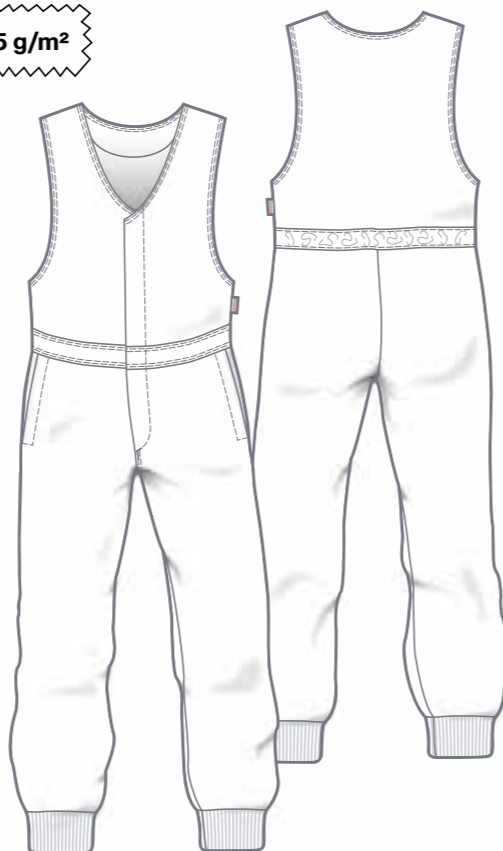
7609111-001
white

UNISEX COVERALL

without pockets
ITEM 7609111

SIZES: XS - 3XL
S-L - XL-L (length + 4 cm)
S-K - 2XL-K (length - 5 cm)

- + Hidden snap fastener placket
- + 2 side passages with hidden snap fastener
- + Elasticated adjustable back waistband
- + Legs with ribbed cuffs



DIN 10524:2020-06

RK1

RK2

RK3

215 g/m²



1724-001
white

UNISEX SHIRT

ITEM 1724

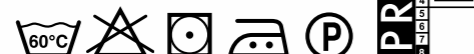
SIZES: XS - 3XL

- + Collar with hidden snap fastener
- + Adjustable cuffs
- + Side slits



MATERIAL:
65% polyester
35% cotton

CARE knitted cuffs:

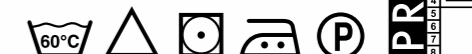


CARE white:



MATERIAL:
65% polyester
35% cotton

CARE:



TUNICS
JACKETS
COATS
TROUSERS
DUNGAREES
COVERALLS
SHIRTS
THERMAL
MULTINORM
MEAT HANDLER

DIN 10524:2012

RK1

RK2

RK3

215 g/m²

ADDITIONAL ITEMS



1726-001
white

LADIES' TUNIC

ITEM 1726

SIZES: 34 - 60

- + Stand-up/turn down collar
- + Hidden snap fastener placket
- + Adjustable cuffs with snap fasteners
- + 2 side inner pockets
- + Adjustable waist tabs



DIN 10524:2012

RK1

RK2

RK3

250 g/m²

ADDITIONAL ITEMS



1725-159
blue



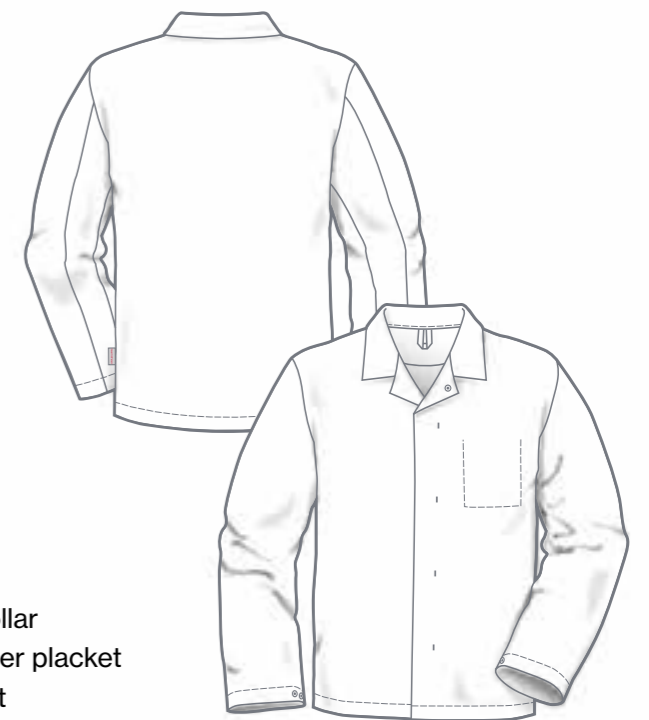
1725-001
white

JACKET

ITEM 1725

SIZES: 42 - 66
94 - 114

- + Lapel/turn down collar
- + Hidden snap fastener placket
- + 1 inner chest pocket
- + Adjustable cuffs with snap fasteners



1729-001
white

LADIES' COAT

ITEM 1729

SIZES: 34 - 60

- + Lapel collar
- + Hidden snap fastener placket
- + 2 inner side pockets
- + Half back belt



DIN 10524:2012

RK1

RK2

RK3

215 g/m²



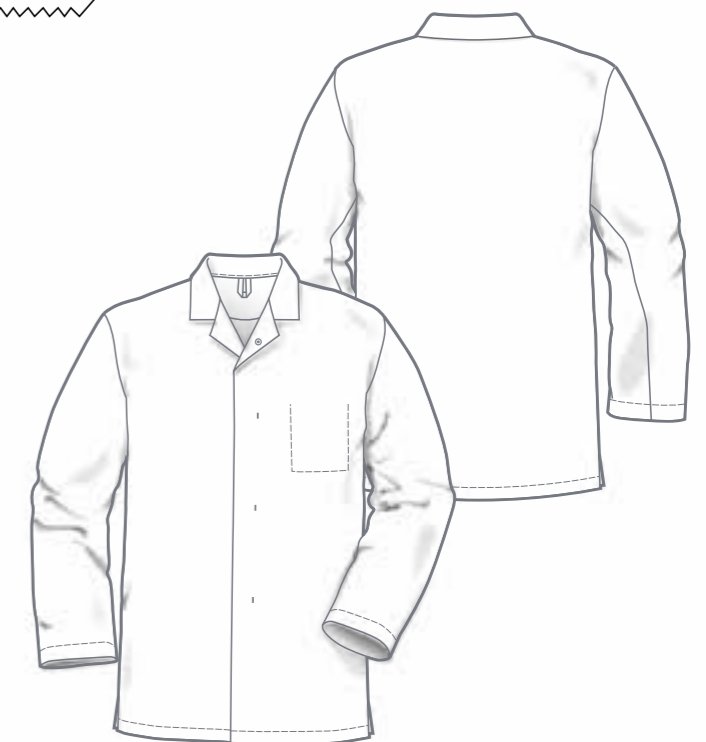
1730-001
white

MEN'S COAT

ITEM 1730

SIZES: 42 - 66
94 - 114

- + Lapel collar
- + Hidden snap fastener placket
- + 1 inner chest pocket
- + Side slits



MATERIAL:

65% polyester
35% cotton

CARE coloured:



CARE white:



DIN 10524:2012

RK1

RK2

RK3

250 g/m²

ADDITIONAL ITEMS

TROUSERS

Optional: Cargo pockets with flap

ITEM 1721, 1721100, 1721200

SIZES: 42 - 66
94 - 114
24 - 32

- + 7 belt loops
- + Waistband with hidden jeans button
- + Pleats
- + Elasticated back waistband
- + Snap fastener fly



1721-001
white



DIN 10524:2012

RK1

RK2

RK3

250 g/m²

ADDITIONAL ITEMS

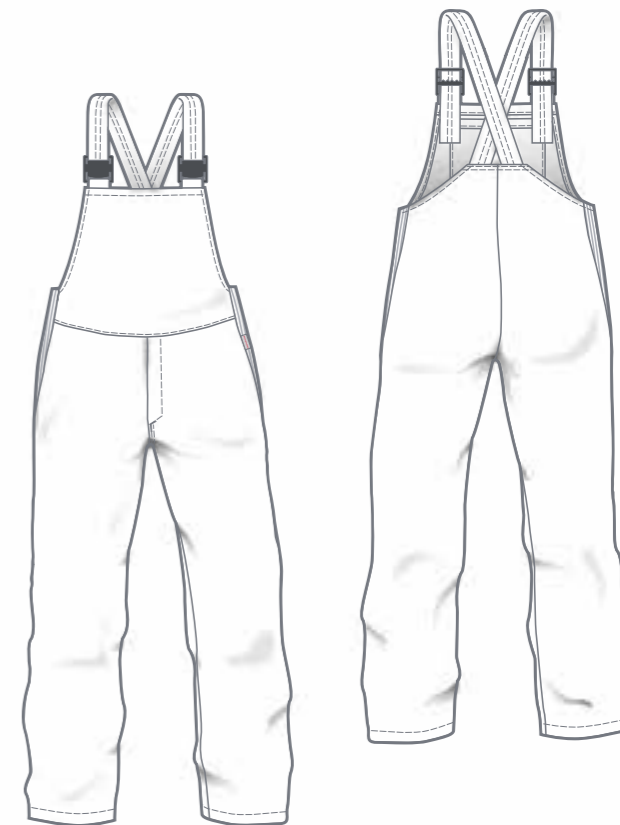
DUNGAREES

Optional: Cargo pockets with flap

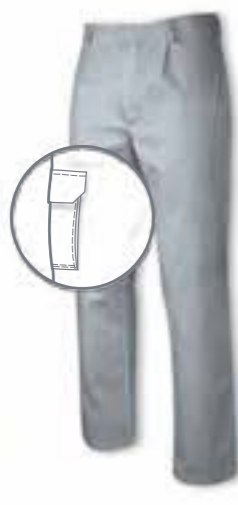
ITEM 1722, 1722100, 1722200

SIZES: 42 - 66
94 - 114
24 - 32

- + Elastic straps with cam lock buckles
- + 1 inner bib pocket with snap fastener
- + Side elasticated
- + Snap fastener fly



1721100-001
white



1721100-094
light grey



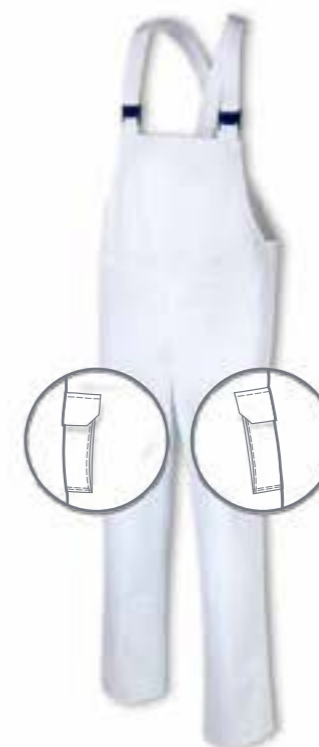
1721200-001
white



1722-001
white



1722100-001
white



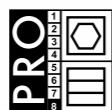
1722200-001
white



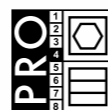
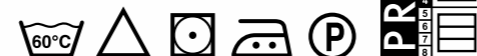
MATERIAL:

65% polyester
35% cotton

CARE coloured:



CARE white:



DIN 10524:2012

RK1

RK2

RK3

300 g/m²
+370 g/m²

THERMAL CLOTHING



8120-001
white



8120-159
blue



THERMAL JACKET
adjustable sleeve cuffs
ITEM 8120



8121-001
white



8121-159
blue



THERMAL VEST
ITEM 8121

SIZES: 40/42 - 64/66
90/94 - 106/110

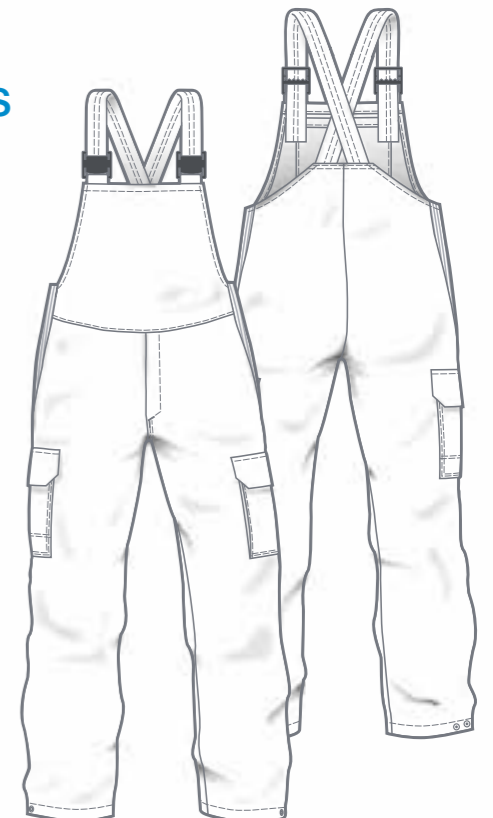
- + Quilted lining with padding
- + Stand-up collar
- + Hidden snap fastener placket
- + 2 inner chest pockets with flaps
- + Elasticated rear waist
- + Longer back



8122-001
white



8122-159
blue



THERMAL DUNGAREES
ITEM 8122

SIZES: 40/42 - 64/66
90/94 - 106/110

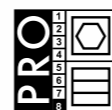
- + Quilted lining with padding
- + Elastic straps
- + 1 inner bib pocket
- + Side elasticated
- + Zip fly
- + 1 cargo pocket with flap
- + 1 reinforced ruler pouch with flap and snap fastener
- + Leg hems with snap fasteners

MATERIAL:

65% polyester / 35% cotton

QUILTED LINING: 100% polyester

CARE:



MULTINORM

Model design according
to HACCP
DIN 10524

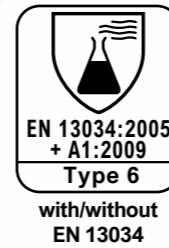


Feels so right

flame retardant
equipped

Model design according to HACCP DIN 10524

300 g/m²



WITHOUT BIB POCKET



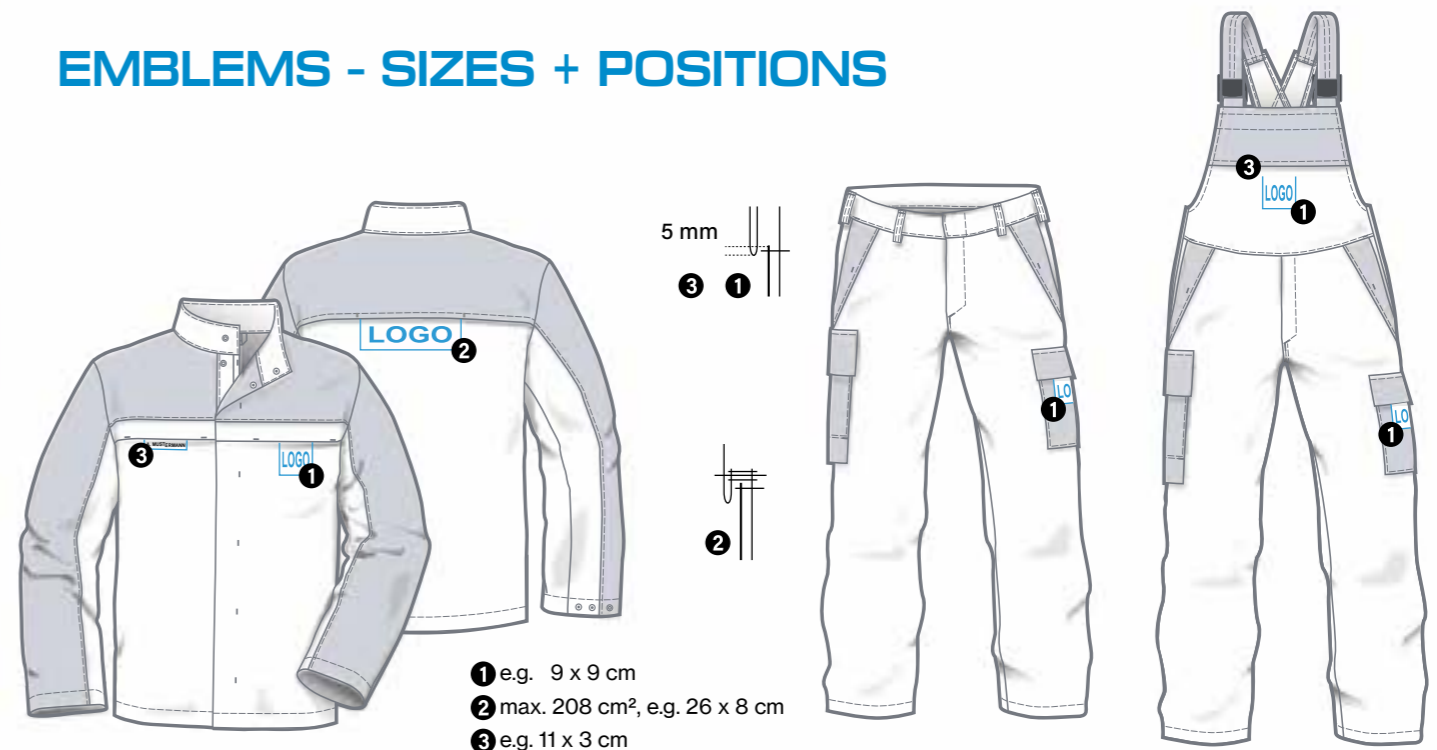
NO OUTSIDE POCKETS



The models comply with the requirements of the DIN 10524 standard with regard to pockets, sleeve length of the jacket, fastenings and cut design.

Confirmation by an accredited testing institute is available.

EMBLEMS - SIZES + POSITIONS



- 1 e.g. 9 x 9 cm
- 2 max. 208 cm², e.g. 26 x 8 cm
- 3 e.g. 11 x 3 cm

Model design according to HACCP DIN 10524

300 g/m²

JACKET

no outside pockets



ITEM 6150 222

ITEM 7150 222

SIZES: 44 - 66
90 - 114

- + Stand-up collar
- + Hidden snap fastener placket
- + 1 inner chest pocket with snap fastener
- + 1 inner side pocket with snap fastener
- + Adjustable cuffs with snap fasteners

OPTIONAL:

- + Without EN 13034 (chemical protection)



346
blue
navy blue



842
grey
red

TROUSERS



ITEM 6151 000

ITEM 7151 000



ITEM 6151 777

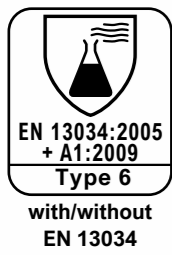
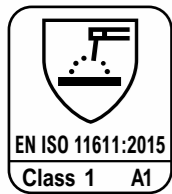
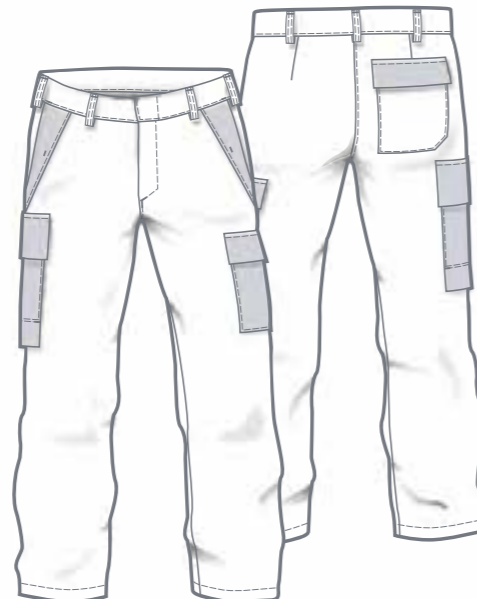
ITEM 7151 777

SIZES: 44 - 66
90 - 114
22 - 33

- + 7 belt loops
- + Waistband fastener with hidden jeans button
- + Zip fly
- + 2 side pockets with hidden snap fastener
- + 1 hip pocket with flap and hidden snap fasteners
- + 1 cargo pocket with flap and hidden snap fasteners
- + 1 reinforced ruler pouch with flap and hidden snap fasteners

OPTIONAL:

- + Without EN 13034 (chemical protection)
- + Knee reinforcement with opening for knee pads, with velcro



MATERIAL:
50% lyocell (TENCEL™)
30% cotton
19% polyester
1% antistatic

CARE:



Model design according to HACCP DIN 10524

300 g/m²

DUNGAREES



ITEM 6152 222

ITEM 7152 222



ITEM 6152 444

ITEM 7152 444

SIZES: 44 - 66
90 - 114
22 - 33

- + Adjustable elastic straps with cam lock buckle
- + High bib back
- + 1 inner bib pocket with zip
- + 2 side fasteners
- + 1 hip pocket with flap and snap fasteners
- + 2 side pockets with snap fastener
- + 1 left cargo pocket with flap and snap fasteners
- + 1 internally and externally reinforced right ruler pouch with flap and snap fasteners
- + Zip fly

OPTIONAL:

- + Without EN 13034 (chemical protection)
- + Knee reinforcement with opening for knee pads, with velcro

MULTINORM



346
blue
navy blue



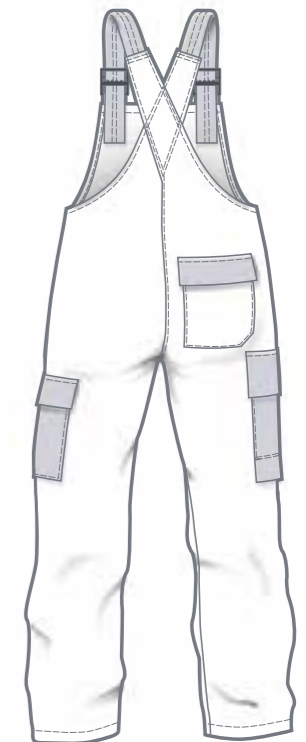
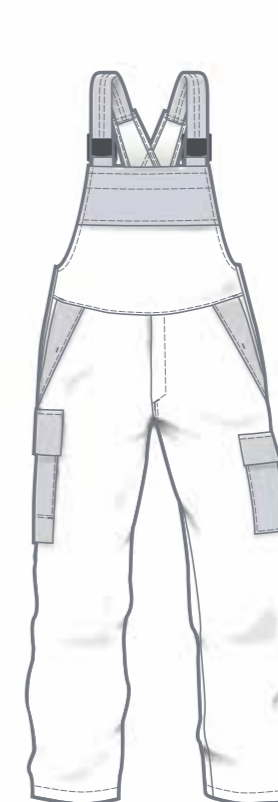
842
grey
red



346
blue
navy blue



842
grey
red





MEAT HANDLER

not certified according to DIN 10524

290 g/m²



1883-131
navy blue striped

MEAT HANDLER JACKET

ITEM 1883

SIZES: 42 - 66
94 - 114

- + Turn down collar
- + Hidden snap fastener placket
- + Adjustable cuffs with snap fasteners
- + 1 chest pocket
- + 1 inner chest pocket



1882000-131
navy blue striped

MEAT HANDLER COAT

hooded

ITEM 1882000

SIZES: 42 - 66

- + Hidden snap fastener placket
- + Adjustable cuffs with snap fasteners
- + 1 chest pocket
- + Side slits



MATERIAL:
65% polyester
35% cotton

CARE:

not certified according to DIN 10524

300 g/m²



1880000-132
black fine striped

MEAT HANDLER JACKET

ITEM 1880 000

SIZES: 42 - 66, 94 - 114

- + Lapel collar
- + Hidden snap fastener placket
- + 1 chest pocket
- + 2 side pockets
- + Cuffs with slits and snap fastener

MATERIAL: 65% polyester
35% cotton

CARE:



TUNICS
JACKETS
COATS
TROUSERS
DUNGAREES

not certified according to DIN 10524

215 g/m²

300 g/m²



1885111-001
white

JACKET

ITEM 1885 111

SIZES: 42 - 66, 94 - 114

- + Lapel/turn down collar
- + Hidden snap fastener placket
- + 2 inner chest pockets
- + 2 inner front pockets
- + Adjustable cuffs with snap fasteners
- + Back and front ventilation openings at chest height

MATERIAL: 65% polyester
35% cotton

CARE:



1007-001
white

BIB APRON

ITEM 1007

- + Size W x L: 110 x 109 cm (43 x 43 inch)
- + Tie belt 107 cm (42 inch)

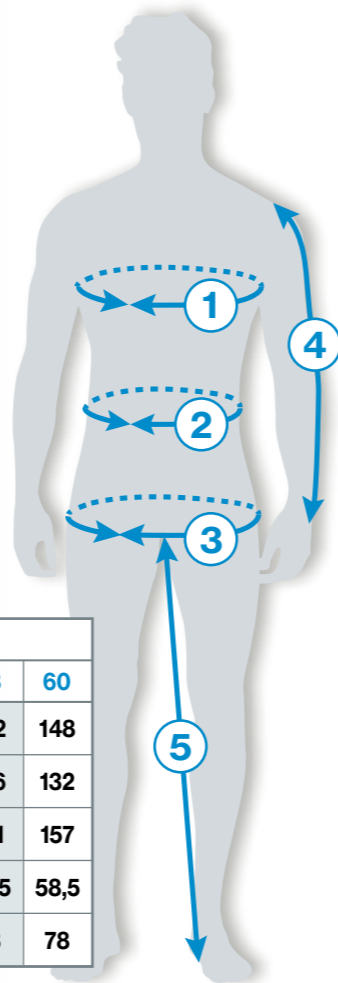
MATERIAL: 65% polyester
35% cotton

CARE:



COVERALLS
SHIRTS
THERMAL
MULTINORM
MEAT HANDLER

Measures in cm



	LADIES	Sizes													
		34	36	38	40	42	44	46	48	50	52	54	56	58	60
①	Chest	80	84	88	92	96	100	106	112	118	124	130	136	142	148
②	Waist	64	68	72	76	80	84	90	96	102	108	114	120	126	132
③	Hip	89	93	97	101	105	109	115	121	127	133	139	145	151	157
④	Sleeve length	58,5	58,5	58,5	58,5	58,5	58,5	58,5	58,5	58,5	58,5	58,5	58,5	58,5	58,5
⑤	Inside leg	78	78	78	78	78	78	78	78	78	78	78	78	78	78

	MEN	Sizes															
		XS		S		M		L		XL		2XL		3XL		4XL	
		40	42	44	46	48	50	52	54	56	58	60	62	64	66	68	70
①	Chest	80	84	88	92	96	100	104	108	112	116	120	124	128	132	136	140
②	Waist	68	72	76	80	84	88	92	96	100	106	112	118	124	130	136	142
③	Hip	88	92	96	100	104	108	112	116	120	124	128	132	136	140	144	148
④	Sleeve length	59	61	62	63	64	65	66	67	68	69	70	71	72	73	74	75
⑤	Inside leg	72	74	76	77	78	79	80	81	82	83	84	84	84	84	84	84
	LONG SIZES	XS-L		S-L		M-L		L-L		XL-L							
		82	86	90	94	98	102	106	110	114	118						
		41	43	45	47	49	51	53	55	57	59						
④	Sleeve length	63	65	66	67	68	69	70	71	72	73						
⑤	Inside leg	76	78	80	81	82	83	84	85	86	87						
	SHORT SIZES	XS-K		S-K		M-K		L-K		XL-K		2XL-K		3XL-K			
		20	21	22	23	24	25	26	27	28	29	30	31	32	33		
④	Sleeve length	57	59	60	61	62	63	64	65	66	67	68	69	70	71		
⑤	Inside leg	67	69	71	72	73	74	75	76	77	78	79	79	79	79		

Measurements
① - ③
the same as normal sizes

Size conversion table

MEN	XS		S		M		L		XL		2XL		3XL		4XL		
	40	42	44	46	48	50	52	54	56	58	60	62	64	66	68	70	
LADIES	34	36	38	40	42	44	46	48	50	52	54	56	58				

SIZES + MEASURES

A photograph of two men in white lab coats standing in a kitchen or food service area. The man on the left has dark curly hair and a beard, with his arms crossed. The man on the right is bald with a beard. They are surrounded by stainless steel shelving units filled with various kitchen items like trays, containers, and glassware. The lighting is bright and even.

deberkel[®]
finest professional clothing

De Berkel B.V.
Gesinkkampstraat 13
7051 HR VARSSEVELD
NETHERLANDS
Tel.: +31 315 244161
E-Mail: info@deberkel.nl
Web: www.deberkel.nl

teamdress[®]
high performance workwear

teamdress Stein
Deutschland GmbH
Brandstücken 27
22549 HAMBURG
GERMANY
Tel.: +49 40 800905-01
E-Mail: info@teamdress.de
Web: www.teamdress.de