

deberkel®

finest professional clothing



GOOD CUISINE NEEDS
THE BEST CLOTHES.

Hygienic and comfortable – the de berkel® catering collection.



- + The seal is issued by the Federal Ministry for Economic Cooperation and Development.
- + The Green Button seal makes sustainably produced textiles visible in trade.
- + The Green Button sets binding requirements to ensure that people and nature are not harmed.

Learn more at:
www.g-k.eu/teamdress



MADE IN GREEN



STeP



STANDARD 100

OEKO-TEX® STANDARD 100

- + Compliance with legal requirements for textile-relevant chemicals
- + Annual re-evaluation and further development of defined limit values and criteria
- + Globally uniform and scientifically based test criteria

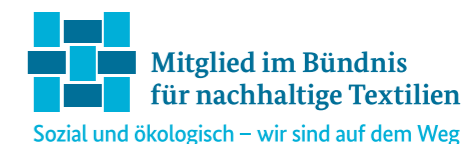
Learn more at
www.oeko-tex.com/standard-100

+ teamdress is a member of



green selection

+ our sustainable collections



- + FAIRTRADE cotton raw material model
- + Because farmers can sell larger quantities of their cotton through the Fairtrade raw material model for cotton, they are offered fairer trading conditions as well as new ways to bring about social change and greater environmental protection.

Find out more at
www.info.fairtrade.net/sourcing



Feels so right

- + Lyocell fibers (TENCEL™) are made from wood.
- + Environmentally conscious manufacturing process with more than 99% recycling of process materials into the production cycle.
- + Absorbs moisture more efficiently than cotton, dry feeling.

TENCEL™ is a brand of Lenzing AG



CONTENTS

4 ITEM OVERVIEW

6 CHEF JACKETS

26 TROUSERS

36 APRONS

49 ACCESSORIES

50 SIZES + MEASURES

CHEF JACKETS

TROUSERS

APRONS

ACCESSORIES

ITEM OVERVIEW

8 NATHAN
10 NAOMI
12 MAIKEL
14 MAJA
16 BALDO [BALDER]
18 BLANDA [BLANDINA]
 [with chest pocket]
22 CLEM [CLEMENS]
CESAR [CARLOS]
 [with chest pocket]
28 CLAUS
28 CONRAD
29 BDS
46 Bib apron
47 Waist apron

20 GERARD
GEA
22 BERNT [BERTEL]
23 CLIFF [CLIFTON]
24 HILTON
47 Waist apron

Product images and codes for jackets and aprons. Includes a 65% discount badge on the Bernt [BerTEL] jacket.

30 BAGGY
30 HEINZ
 + Tencel™
30 FONS
35 HERMA
31 CASPER
CARO
 + recPET
 + Tencel™
31 CALEB
CARISSA
 + Fairtrade
31 CHRIS
CARLA
32 HILMAR
HIDDA
33 TOBY
TRIJNTJE
34 HEIKO

Product images and codes for trousers. Includes a 'TOP SELLER' star icon for the Toby [Trijntje] trousers.

40 Bib apron
38 Waist apron
42 JEANS Aprons
43
44

Product images and codes for various aprons. Includes a 'TOP SELLER' star icon for the Bib apron.

47 Waist apron
47 Bistro apron
48 Bib apron
48 Bib apron
49 Cap

Product images and codes for additional aprons and a cap.

CHEF JACKETS

TROUSERS

APRONS

ACCESSORIES



CHEF JACKETS

TROUSERS

APRONS

ACCESSORIES

CHEF JACKETS



35% cotton
Supporting
Fairtrade Cotton

- + FAIRTRADE cotton raw material model
- + Because farmers can sell larger quantities of their cotton through the Fairtrade raw material model for cotton, they are offered fairer trading conditions as well as new ways to bring about social change and greater environmental protection.

Find out more at
www.info.fairtrade.net/sourcing



B1836-363
white
black Denim



B1836-503
black
black Denim



B1836-699
dark grey
black Denim



B1836-212
olive
black Denim



NATHAN - MEN'S CHEF'S JACKET

ITEM B1836

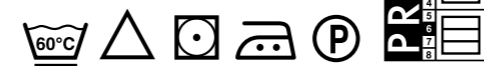


SIZES: 44 - 68
90 - 114

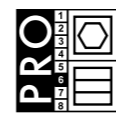
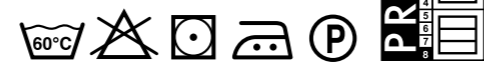
- + Stand-up collar, with back tab for affixing the neck strap of a bib apron
- + Snap fastener placket
- + 1 chest pocket with zip
- + 1 sleeve pocket with pen compartment
- + Cuffed sleeves

MATERIAL: 65% polyester
35% cotton
210 g/m²

CARE white:



CARE coloured:



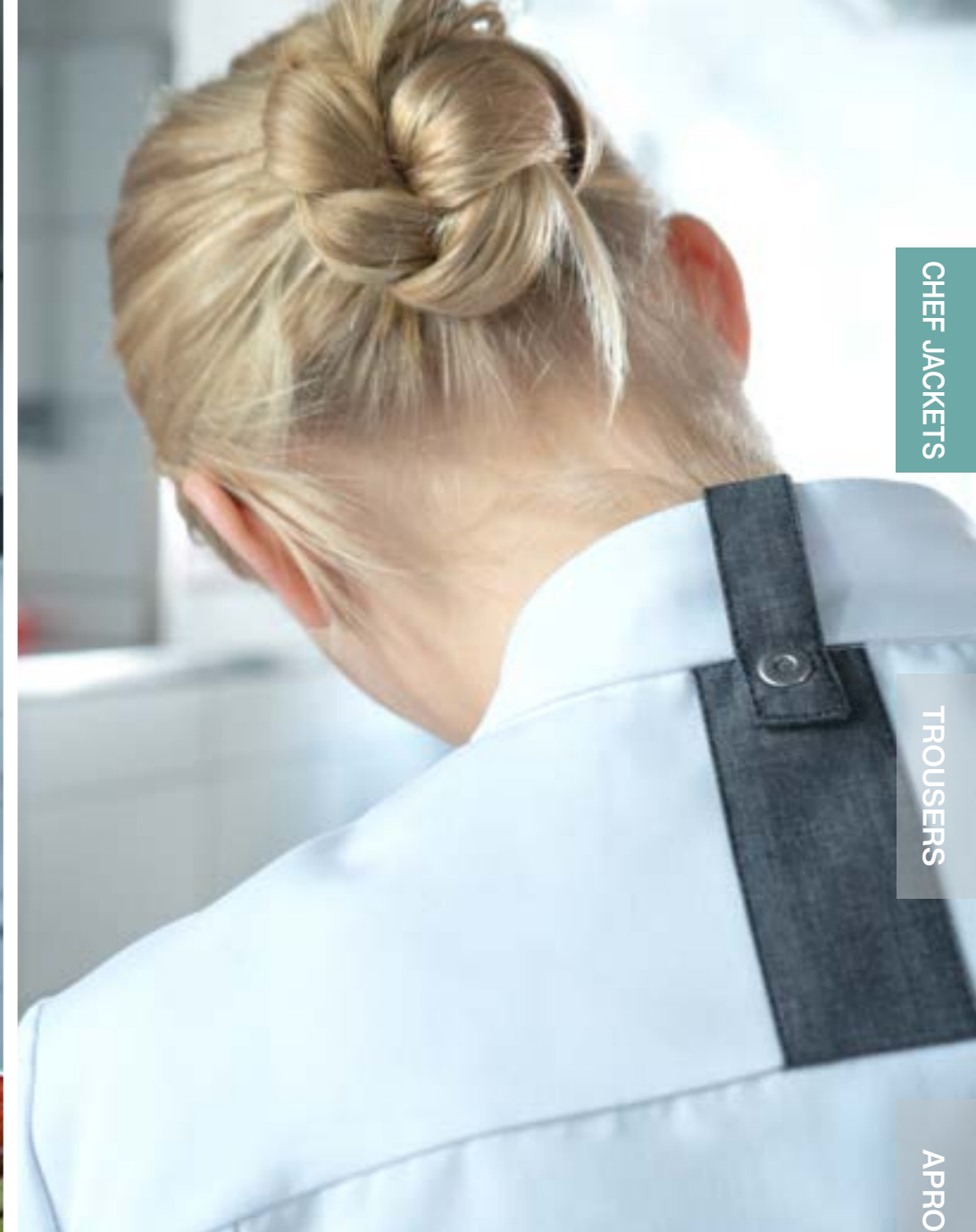
CHEF JACKETS

TROUSERS

APRONS

ACCESSORIES





CHEF JACKETS

TROUSERS

APRONS

NAOMI - LADIES' CHEF'S JACKET

ITEM B4648

SIZES: 34 - 56



- + Stand-up collar, with back tab for affixing the neck strap of a bib apron
- + Snap fastener placket
- + 1 chest pocket with zip
- + 1 sleeve pocket with pen compartment
- + Cuffed sleeves



B4648-363
white
black Denim



B4648-503
black
black Denim



B4648-699
dark grey
black Denim



B4648-212
olive
black Denim

MATERIAL: 65% polyester
35% cotton
210 g/m²

CARE white:



CARE coloured:



ACCESSORIES



B1837-363
white
black Denim



B1837-503
black
black Denim



Tencel™
Feels so right

**MAIKEL
MEN'S CHEF'S JACKET**

ITEM B1837

SIZES: 44 - 68, 90 - 114



- + Stand-up collar
- + Snap fastener placket
- + 1 pen pocket with compartments
- + Sleeves with stretch inserts to assist with freedom of movement and ventilation

MATERIAL: 50% polyester
50% lyocell (TENCEL™)
200 g/m²

CARE:



white:



black:



CHEF JACKETS

TROUSERS

APRONS

ACCESSORIES



B4649-363
white
black Denim



B4649-503
black
black Denim

MAJA - LADIES' CHEF'S JACKET

ITEM B4649



SIZES: 34 - 56

- + Stand-up collar
- + Snap fastener placket
- + 1 pen pocket with compartments
- + Sleeves with stretch inserts to assist with freedom of movement and ventilation



MATERIAL: 50% polyester
50% lyocell (TENCEL™)
200 g/m²

CARE:



white:



black:





1867-001 [1867 000-001] white
 1867-898 [1867 000-898] anthracite
 1867-000 [1867 000-000] black
 1867-018 [1867 000-018] brown

[with chest pocket]

1867-997 [1867 000-997] smokeberry
 Stretch in anthracite

MATERIAL: 65% polyester
 35% cotton, 215 g/m²
STRETCH INSERTS: 55% cotton
 45% polyester, 185 g/m²
STRETCH SLEEVE: 100% polyester, 360 g/m²

CARE: 60°C

white: coloured:



MEN'S CHEF'S JACKET WITH STRETCH

BALDO ITEM 1867
 without chest pocket

BALDER ITEM 1867 000
 with chest pocket

SIZES: 44 - 68
 90 - 114

- + Stand-up collar, with back tab for affixing the neck strap of a bib apron
- + Snap fastener placket
 2 snap fasteners visible,
 3 snap fasteners hidden
- + Cuffed sleeves

CHEF JACKETS

TROUSERS

APRONS

ACCESSORIES

MATERIAL: 65% polyester
35% cotton, 215 g/m²
STRETCH INSERTS: 55% cotton
45% polyester, 185 g/m²
STRETCH SLEEVE: 100% polyester, 360 g/m²

CARE:      

white:   coloured:  




1866-001 [1866 000-001] white
1866-898 [1866 000-898] anthracite
1866-000 [1866 000-000] black
1866-018 [1866 000-018] brown




1866-997 [1866 000-997] smokeberry
Stretch in anthracite
[with chest pocket]



LADIES' CHEF'S JACKET WITH STRETCH

 **BLANDA ITEM 1866**
without chest pocket

 **BLANDINA ITEM 1866 000**
with chest pocket

SIZES: 34 - 54

- + Stand-up collar, with back tab for affixing the neck strap of a bib apron
- + Snap fastener placket
2 snap fasteners visible,
4 snap fasteners hidden
- + Cuffed sleeves





GERARD MEN'S CHEF'S JACKET

ITEM B1541326

SIZES: 2XS - 4XL

- + Stand-up collar
- + Snap fastener placket, 1st snap fastener visible, rest hidden
- + Cuffed sleeves



B1541326-001
white



B1541326-B70
black



MATERIAL: 65% polyester
35% cotton
215 g/m²

white:



black:



CARE:



B4246326-001
white



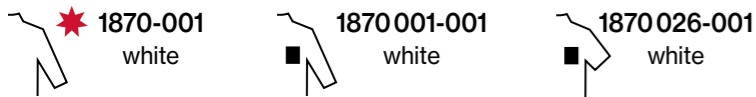
B4246326-B70
black

GEA LADIES' CHEF'S JACKET

ITEM B4246326

SIZES: 2XS - 3XL

- + Stand-up collar
- + Snap fastener placket, 1st snap fastener visible, rest hidden
- + Cuffed sleeves

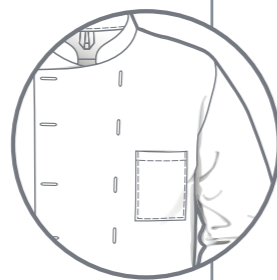


MEN'S CHEF'S JACKET

MATERIAL:
65% polyester
35% cotton, 250 g/m²



- CESAR ITEM 1870** ★ TOP SELLER
Long sleeves, without chest pocket
- CARLOS ITEM 1870 001**
Long sleeves, with chest pocket
- CLEM ITEM 1870 025**
Short sleeves, without chest pocket
- CLEMENS ITEM 1870 026**
Short sleeves, with chest pocket



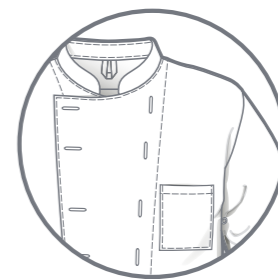
SIZES: 40 - 68
90 - 114

- + Stand-up collar
- + Two rows for stud buttons

MATERIAL:
65% cotton
35% polyester, 245 g/m²



- BERNT ITEM 1168**
Long sleeves, without chest pocket
- BERTEL ITEM 1168 000**
Long sleeves, with chest pocket



MEN'S CHEF'S JACKET

- CLIFF ITEM 2195**
without chest pocket
- CLIFTON ITEM 2195 000**
with chest pocket

SIZES: 40 - 68

- + Stand-up collar
- + Two rows for stud buttons
- + 4 ventilation eyelets left and right

MATERIAL: 50% polyester
50% cotton, 215 g/m²





B2443326-001
white

B2443326-B70
black

B2331326-001
white

★ TOP SELLER

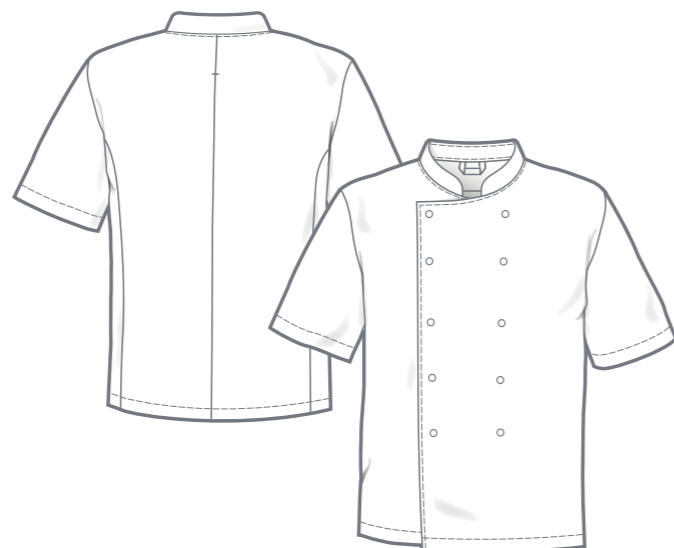
HILTON MEN'S CHEF'S JACKET

ITEM B2443326
Long sleeves, white + black

ITEM B2331326
Short sleeves, white

SIZES: 42 - 68

- + Stand-up collar
- + Two rows with snap fasteners

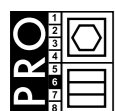


MATERIAL: 65% polyester
35% cotton
215 g/m²

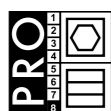
CARE:



white:



black:





CHEF JACKETS

TROUSERS

APRONS

ACCESSORIES

TROUSERS



1871-133A
navy blue checked

CLAUS CHEF'S TROUSERS

ITEM 1871

SIZES: 40 - 68
90 - 114
22 - 32

- + Extended waistband with 2 jeans buttons
- + 7 belt loops
- + Button fly
- + 2 side pockets
- + 1 back pocket with hidden snap fastener

MATERIAL: 65% polyester
35% cotton
250 g/m²

CARE:



★ TOP SELLER



1873-134
black checked

CONRAD CHEF'S TROUSERS

ITEM 1873

SIZES: 40 - 68
90 - 114
22 - 32

- + Waistband fastener with 2 snap fasteners
- + 7 belt loops
- + Zip fly
- + 2 side pockets
- + 1 back pocket with hidden snap fastener

MATERIAL: 65% polyester
35% cotton
250 g/m²

CARE:



B7305432-B41
navy blue checked

BDS - CHEF'S TROUSERS

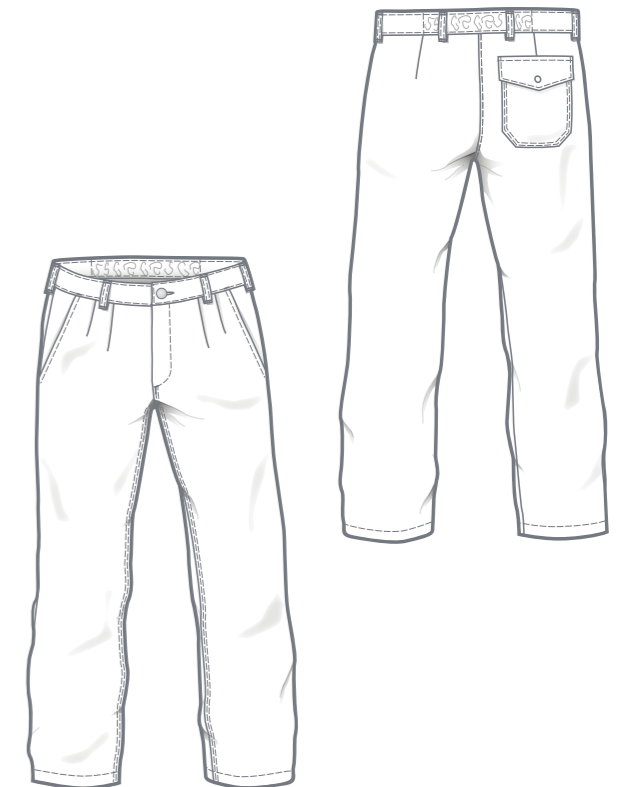
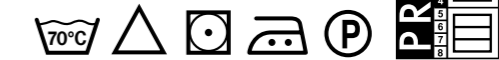
ITEM B7305432

SIZES: 44 - 66
45 - 65 (long sizes see page 50)

- + Waistband fastener with jeans button
- + 6 belt loops
- + Elasticated back waistband
- + pleats
- + Button fly
- + 2 side pockets
- + 1 hip pocket with flap and snap fastener

MATERIAL: 67% polyester
33% cotton
260 g/m²

CARE:





BAGGY - UNISEX SLIP-ON TROUSERS

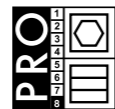
ITEM B7424325

SIZES: XS - 3XL

- + Elasticated waistband with cord
- + 2 side pockets
- + 1 hip pocket with snap fastener

MATERIAL: 65% polyester
35% cotton
215 g/m²

CARE:



B7424325-B70
black



CARO + CARISSA + CARLA LADIES' SLIP-ON TROUSERS

CASPER + CALEB + CHRIS MEN'S SLIP-ON TROUSERS

SIZES: XS - 3XL
XS-L - XL-L (length + 4 cm)
XS-K - 2XL-K (length - 5 cm)

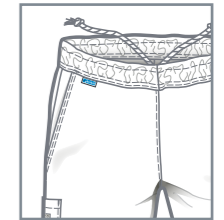
- + Elasticated waistband with cord (internal)
- + 2 side pockets
- + 2 hip pockets
- + 1 thigh pocket right
- + Inner side tabs
- + Elasticated back of leg hems



CARISSA + CALEB



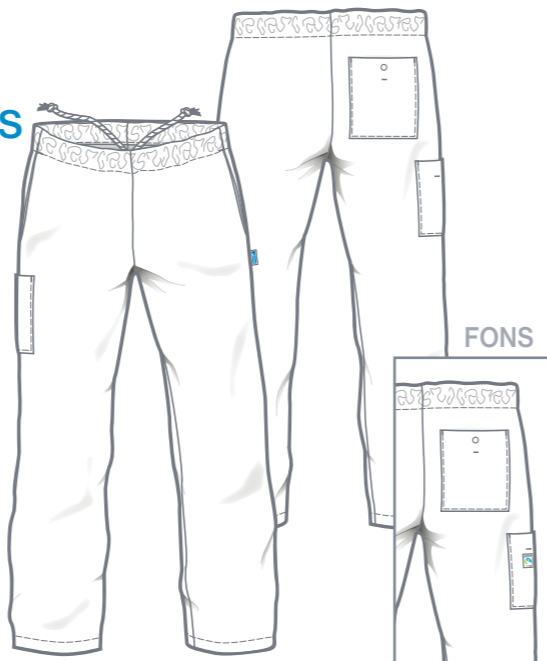
CARLA + CHRIS



HEINZ + FONS UNISEX SLIP-ON TROUSERS IN 3 LENGTHS

SIZES: XS - 3XL
XS-L - XL-L (length + 4 cm)
XS-K - 2XL-K (length - 5 cm)

- + Elasticated waistband with cord (internal)
- + 2 side pockets
- + 1 back pocket with snap fastener
- + 1 thigh pocket right
- + Inner side tabs



HEINZ
7761-001
white

HEINZ

MATERIAL: 65% polyester
35% lyocell (TENCEL™)
215 g/m²

FONS

MATERIAL: 65% polyester
35% cotton
215 g/m²



FONS
7760-001
white

FONS
7760-039
navy blue

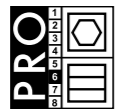
FONS
7760-898
anthracite



CARE white:



CARE coloured:



★ TOPSELLER



CARO 7774-001
CASPER 7770-001
white

CARO 7774-611
CASPER 7770-611
navy blue

MATERIAL: 65% polyester (recPET)
35% lyocell (TENCEL™)
190 g/m²

CARE:



white

navy blue



CARISSA 7773-690
CALEB 7771-690
olive

MATERIAL: 65% polyester
35% cotton
210 g/m²

CARE:



olive



CARLA 7775-617
CHRIS 7772-617
black Denim

CARLA 7775-405
CHRIS 7772-405
navy blue Denim

MATERIAL: 67% polyester
Denim
33% cotton
190 g/m²

CARE:



Denim



CHEF JACKETS

TROUSERS

APRONS

ACCESSORIES



7909-000
black



7909-001
white



HILMAR - MEN'S TROUSERS 5 POCKET IN 3 LENGTHS

ITEM 7909

SIZES: 44 - 66
90 - 114
23 - 30

- + 7 belt loops
- + Waistband with jeans button
- + Zip fly
- + 2 side pockets
- + 1 coin pocket
- + 2 back pockets



MATERIAL: 60% polyester
35% cotton
5% elastolefin
240 g/m²



B7499326-B70
black

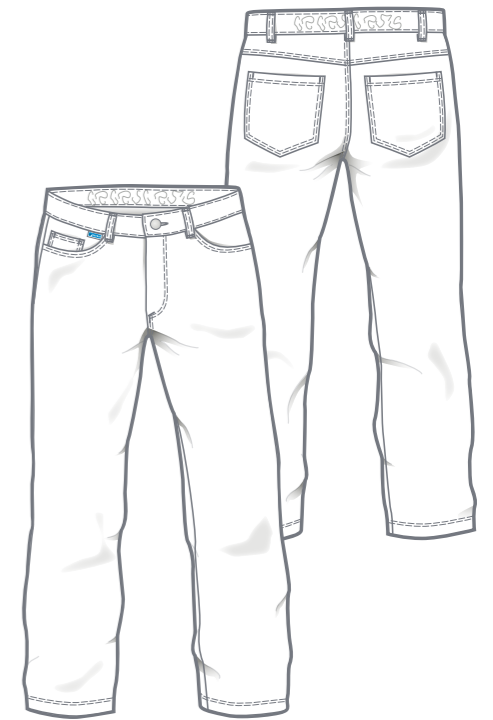
TOBY - MEN'S TROUSERS 5 POCKET

ITEM B7499326

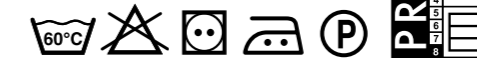
SIZES: 44 - 66

- + 5 belt loops
- + Waistband fastener with jeans button
- + Elasticated back waistband
- + Zip fly
- + 2 side pockets
- + 1 coin pocket
- + 2 hip pockets

MATERIAL: 65% polyester
35% cotton
215 g/m²



CARE:



HIDDA - LADIES' TROUSERS 5 POCKET IN 3 LENGTHS

ITEM 7908

SIZES: 34 - 56
72 - 88
18 - 25

- + Straight cut
- + Hip height
- + Elasticated adjustable back waistband
- + 7 belt loops
- + Zip fly
- + 2 side pockets
- + 1 coin pocket
- + 2 back pockets



MATERIAL: 60% polyester
35% cotton
5% elastolefin
240 g/m²



7908-000
black



7908-001
white



★ TOP SELLER



B7492326-B70
black

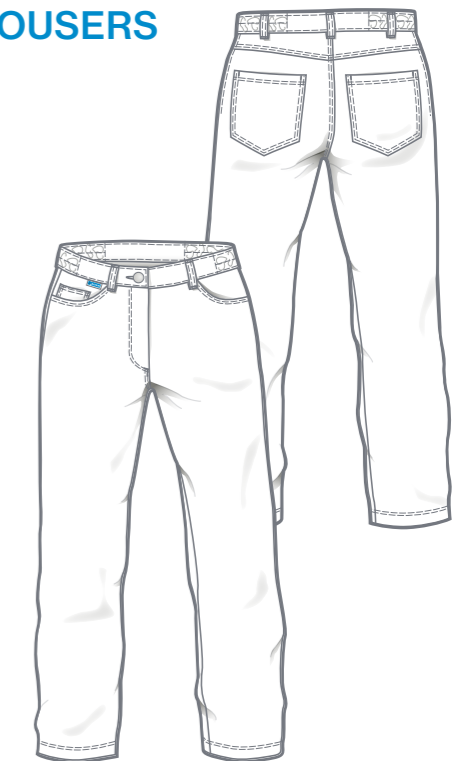
TRIJNTJE - LADIES' TROUSERS 5 POCKET

ITEM B7492326

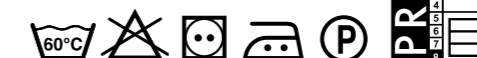
SIZES: 34 - 56

- + 5 belt loops
- + Waistband fastener with jeans button
- + Elasticated side waistband
- + Zip fly
- + 2 side pockets
- + 1 coin pocket
- + 2 hip pockets

MATERIAL: 65% polyester
35% cotton
215 g/m²



CARE:



CARE:



white: coloured:





2850-001
white

HEIKO MEN'S TROUSERS

ITEM 2850

SIZES: 42 - 66
90 - 114
23 - 30

- + 7 belt loops
- + Extended waistband fastener with 2 snap fasteners
- + Zip fly
- + 2 pleats
- + Stitched creases
- + 2 side pockets
- + 1 set-in back pocket with flap and snap fastener

MATERIAL: 65% polyester
35% cotton
300 g/m²

CARE:



7850-001
white

HERMA LADIES' TROUSERS

ITEM 7850

SIZES: 34 - 60

- + Waistband with jeans button
- + 7 belt loops
- + Elasticated adjustable back waistband
- + Zip fly
- + 2 pleats
- + 2 side pockets

MATERIAL: 65% polyester
35% cotton
215 g/m²

CARE:



CHEF JACKETS

TROUSERS

APRONS

ACCESSORIES

APRONS

CHEF JACKETS

TROUSERS

APRONS

ACCESSORIES





35% cotton
Supporting
Fairtrade Cotton

- + FAIRTRADE cotton raw material model
- + Because farmers can sell larger quantities of their cotton through the Fairtrade raw material model for cotton, they are offered fairer trading conditions as well as new ways to bring about social change and greater environmental protection.

Find out more at
www.info.fairtrade.net/sourcing



B8475-212
olive
black Denim



B8475-503
black
black Denim



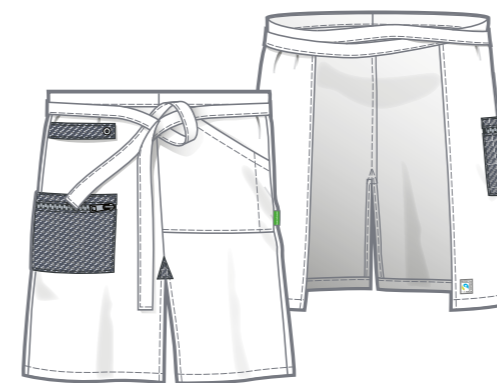
B8475-921
navy blue
black Denim



B8475-293
khaki
black Denim



B8475-865
brown
black Denim



WAIST APRON

ITEM B8475



SIZE: 1

- + W x H: 100 x 60 cm
- + Tie belt: 120 cm
- + 1 side pocket left with pen compartment
- + 1 side pocket right with zip
- + Loop for towel
- + Front slit

MATERIAL: 65% polyester
35% cotton
210 g/m²

CARE:



CHEF JACKETS

TROUSERS

APRONS

ACCESSORIES



B8474-865
brown
black Denim



B8474-503
black
black Denim



B8474-921
navy blue
black Denim



B8474-212
olive
black Denim



B8474-293
khaki
black Denim



BIB APRON

ITEM B8474



SIZE: 1

- + W x H: 100 x 96 cm
- + Tie belt: 120 cm
- + Adjustable neck strap with jeans button
- + 1 side pocket left with pen compartment
- + 1 side pocket right with zip
- + Loop for towel
- + Front slit

MATERIAL: 65% polyester
35% cotton
210 g/m²

CARE:





8141-550
Denim

WAIST APRON DENIM

ITEM 8141

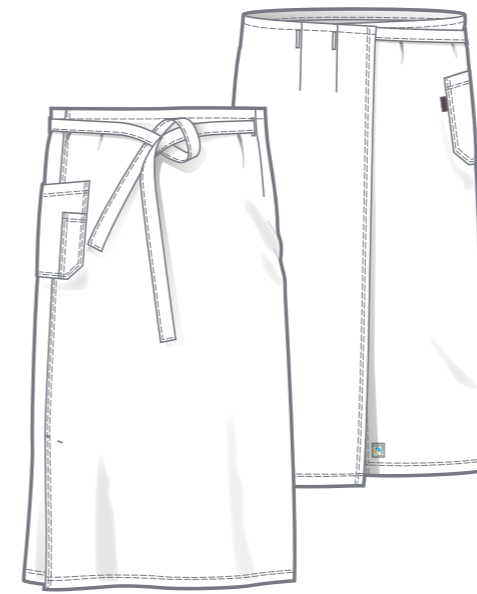
SIZE: 0

- + Size W x H: 81 x 62 cm (32 x 24 inch)
- + Tie belt 99 cm (39 inch)
- + 1 side pocket + pen pocket

MATERIAL: 65% polyester
35% cotton
250 g/m²



CARE:



BISTRO APRON DENIM

ITEM 8142

SIZE: 0

- + Size W x H: 108 x 97 cm (43 x 38 inch)
- + Tie belt 77 cm (30 inch)
- + 3 buttonholes
- + 1 side pocket + pen pocket
- + Front right slit

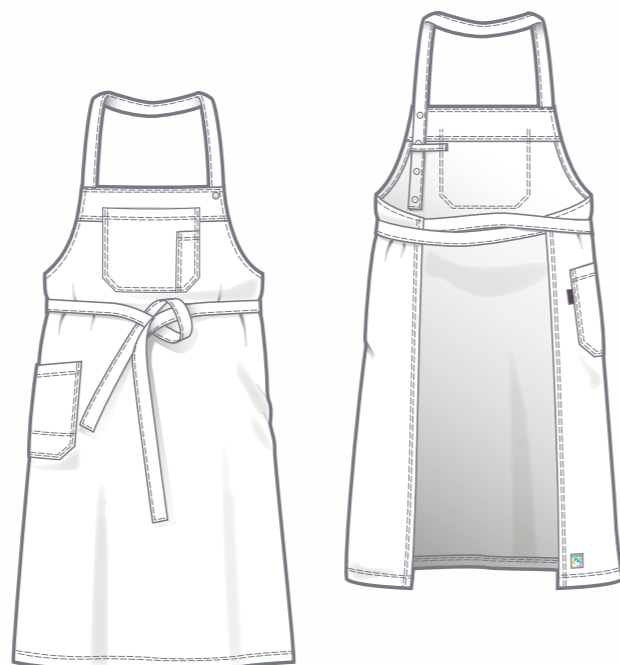


8142-550
Denim





8144-550
Denim



MATERIAL: 65% polyester
35% cotton
250 g/m²

BIB APRON DENIM

ITEM 8144

SIZE: 0

- + Size W x H: 76 x 99 cm (30 x 39 inch)
- + Tie belt 102 cm (40 inch)
- + 1 bib pocket + pen pocket
- + 1 right side pocket
- + Adjustable neck strap with snap fasteners

CARE:



CHEF JACKETS

TROUSERS

APRONS

ACCESSORIES



8115-997
smokeberry

8115-001
white

**BIB APRON
WITH DRAWSTRING
NECK STRAP**

ITEM 8115

SIZE: 0

- + Size W x H: 76 x 83 cm
- + The neck strap and the waist belt are a drawstring design which easily adjusts in one movement
- + 1 side pocket right

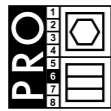


8115-000
black



MATERIAL:
65% polyester
35% cotton
215 g/m²

CARE white:



CARE coloured:



7013-001
white

WAIST APRON

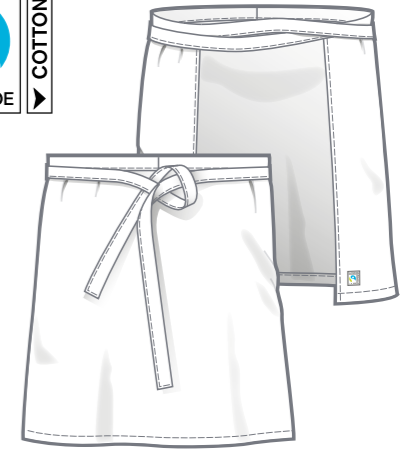
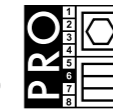
ITEM 7013

SIZE: 0

- + W x L: 74 x 61 cm (29 x 24 inch)
- + Tie belt: 103 cm (41 inch)

MATERIAL: 65% polyester
35% cotton
215 g/m²

CARE:



WAIST APRON

ITEM B8136 021

SIZE: 1

- + Size W x H: 70 x 50 cm
- + Tie belt: 103 cm

MATERIAL: 100% cotton
285 g/m²

CARE:



★ TOP SELLER



B8468-001
white



B8468-000
black

BISTRO APRON

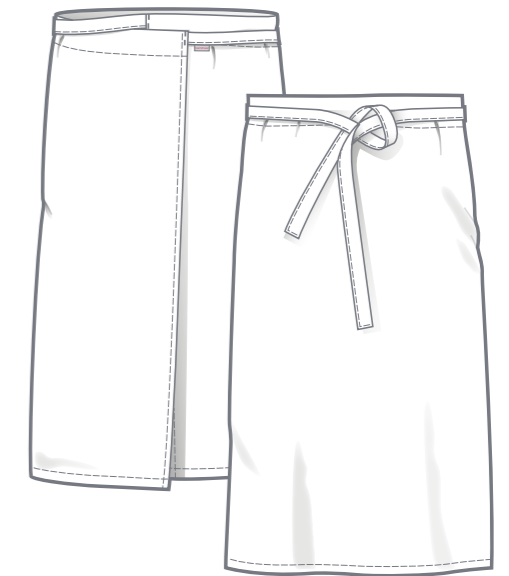
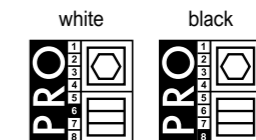
ITEM B8468

SIZE: 1

- + W x H: 105 x 85 cm
- + Tie belt: 100 cm

MATERIAL: 65% polyester
35% cotton
215 g/m²

CARE:





BIB APRON

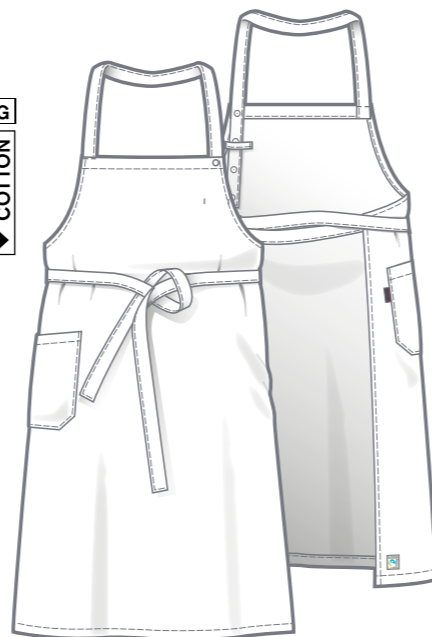
ITEM 8117

SIZE: 0

- + Size W x L: 76 x 99 cm (30 x 39 inch)
- + Tie belt: 102 cm (40 inch)
- + 1 right side pocket
- + Adjustable neck strap with snap fasteners

MATERIAL: 65% polyester
35% cotton
215 g/m²

CARE:



8117-159
kornblau



CAP

ITEM B8348325

SIZE: S - XL

MATERIAL: 65% polyester
35% cotton
215 g/m²

CARE:



B8348325-B70
black



BIB APRON WHITE

ITEM B8411326

SIZE: 1

B8411326-001
white

★ TOP SELLER

- + Size W x H: 90 x 100 cm
- + Tie belt: 100 cm
- + 1 side pocket right

MATERIAL: 65% polyester
35% cotton
215 g/m²

BIB APRON COLOURED

ITEM B8411325

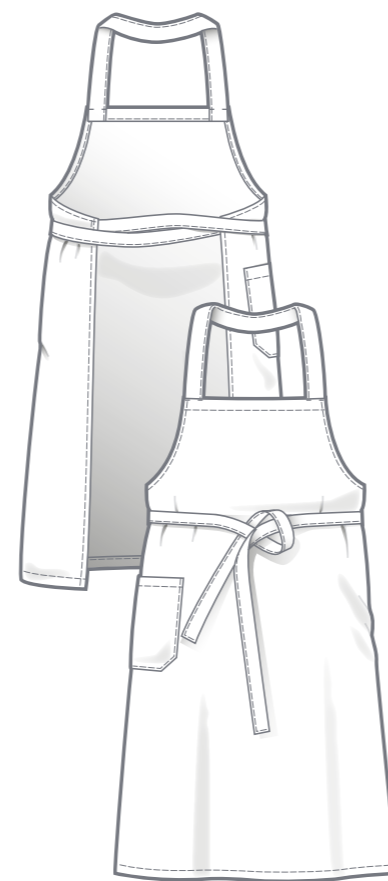
SIZE: 1



B8411325-B70
black



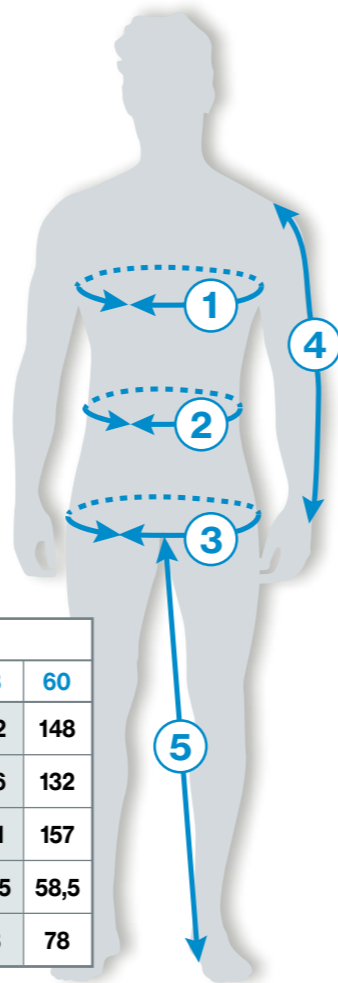
B8411325-B17
navy blue



white: coloured:



Measures in cm



	LADIES	Sizes													
		34	36	38	40	42	44	46	48	50	52	54	56	58	60
①	Chest	80	84	88	92	96	100	106	112	118	124	130	136	142	148
②	Waist	64	68	72	76	80	84	90	96	102	108	114	120	126	132
③	Hip	89	93	97	101	105	109	115	121	127	133	139	145	151	157
④	Sleeve length	58,5	58,5	58,5	58,5	58,5	58,5	58,5	58,5	58,5	58,5	58,5	58,5	58,5	58,5
⑤	Inside leg	78	78	78	78	78	78	78	78	78	78	78	78	78	78

	MEN	Sizes															
		XS		S		M		L		XL		2XL		3XL		4XL	
		40	42	44	46	48	50	52	54	56	58	60	62	64	66	68	70
①	Chest	80	84	88	92	96	100	104	108	112	116	120	124	128	132	136	140
②	Waist	68	72	76	80	84	88	92	96	100	106	112	118	124	130	136	142
③	Hip	88	92	96	100	104	108	112	116	120	124	128	132	136	140	144	148
④	Sleeve length	59	61	62	63	64	65	66	67	68	69	70	71	72	73	74	75
⑤	Inside leg	72	74	76	77	78	79	80	81	82	83	84	84	84	84	84	84
	LONG SIZES	XS-L		S-L		M-L		L-L		XL-L							
		82	86	90	94	98	102	106	110	114	118						
		41	43	45	47	49	51	53	55	57	59						
④	Sleeve length	63	65	66	67	68	69	70	71	72	73						
⑤	Inside leg	76	78	80	81	82	83	84	85	86	87						
	SHORT SIZES	XS-K		S-K		M-K		L-K		XL-K		2XL-K		3XL-K			
		20	21	22	23	24	25	26	27	28	29	30	31	32	33		
④	Sleeve length	57	59	60	61	62	63	64	65	66	67	68	69	70	71		
⑤	Inside leg	67	69	71	72	73	74	75	76	77	78	79	79	79	79		

Measurements
① - ③
the same as normal sizes

Size conversion table

MEN	XS		S		M		L		XL		2XL		3XL		4XL		
	40	42	44	46	48	50	52	54	56	58	60	62	64	66	68	70	
LADIES	34	36	38	40	42	44	46	48	50	52	54	56	58				

SIZES + MEASURES

CHEF JACKETS

TROUSERS

APRONS

ACCESSORIES

